

# 2023 AWARDS

## TOP & PREFERRED PRODUCT AWARDS



**Composi-Tight® 3D Fusion™ Sectional Matrix System**  
Garrison Dental Solutions



**G-CEM ONE™**  
GC America, Inc.



**Admira Fusion x-tra**  
VOCO



**3M™ RelyX™ Universal Resin Cement**  
3M Oral Care



**Pola Rapid**  
SDI



**Featherlight™ LED**  
Ultralight Optics, Inc.



**Visalys® CemCore**  
Kettenbach



**G-aenial A'CHORD™**  
GC America, Inc.



**CLEARFIL SE Protect™**  
Kuraray America, Inc.



# TOP & PREFERRED PRODUCT AWARDS



Dr. Sabiha S. Bunek  
CEO & Editor-in-Chief

**Happy New Year!** In our 40th year this year, we have had great opportunities to review products new and old. Throughout the years, we enjoy featuring products as best in class that really shine above their competitors. This work is not easy, as many manufacturers and distributors present products that all have positive features; however, some just rise to the top. It is our intention to award those products with a DENTAL ADVISOR stamp of approval; and to highlight just what it means to be a Top Product or Preferred Product. Our evaluators are practicing dentists with a variety of experiences in product evaluation and we depend on them for their honest and unbiased feedback. By far, our most exciting discoveries are those new products that are truly innovative and change how procedures are done, improve patient care, or simply make our lives easier.

Many people ask if our awards are purchased, and whether manufacturers purchase awards. The simple answer is absolutely not. Our awards are carefully chosen and awarded to companies who have worked with us in any form of evaluation, whether it be clinical or in our laboratories. In fact, this is the first year that we awarded several laboratory awards for the promise shown outside of a clinical setting. We want to take the opportunity in our 40th year to thank the manufacturers, suppliers, dental professionals who evaluate products, and our readers. Without you, DENTAL ADVISOR would not exist. We love hearing from you. Please reach out to our team at [connect@dentaladvisor.com](mailto:connect@dentaladvisor.com) or me personally at [drbunek@dentaladvisor.com](mailto:drbunek@dentaladvisor.com). **Cheers to another 40 Years!**



Dr. Timothy Bizga



Dr. Matthew Miller



Dr. Stacy Spizuoco



Dr. Adam Hodges



Dr. Mina Kim



Dr. Yaser Shaheen



Dr. Anthony Valentine



Dr. Phing Sauer



Dr. Ashton Prince



## THANK YOU DENTAL ADVISOR CONSULTANTS!

*DENTAL ADVISOR would like to thank our network of dental consultants that has now grown to over 350 during the last 39 years.*

*Pictured here are a few of our consultants who evaluate our products. Thank you for all you do.*

*We are looking forward to seeing everyone in person again in the near future.*

*If you would like to be featured in a future issue of DENTAL ADVISOR, please contact Creative Director, Jim Dombrowski at [jim@dentaladvisor.com](mailto:jim@dentaladvisor.com)*

### FOLLOW US ON SOCIAL MEDIA

**FACEBOOK**  
[FB.COM/THE DENTAL ADVISOR](https://www.facebook.com/thedentaladvisor)

**INSTAGRAM**  
[@THE\\_DENTAL\\_ADVISOR](https://www.instagram.com/the_dental_advisor)

**TWITTER**  
[@DENTALADVISOR](https://twitter.com/dentaladvisor)

**LINKEDIN**  
[/COMPANY/DENTAL-ADVISOR](https://www.linkedin.com/company/dental-advisor)

**YOUTUBE**  
[BIT.LY/DENTALADVISOR](https://www.youtube.com/bit.ly/dentaladvisor)

**PUBLISHER: DENTAL CONSULTANTS, INC.**  
John M. Powers, Ph.D.  
Sabiha S. Bunek, D.D.S.

**CHIEF EXECUTIVE OFFICER**  
Sabiha S. Bunek, D.D.S.

**EDITORIAL BOARD**  
Gary Bloomfield, D.D.S.  
Julius Bunek, D.D.S., M.S.  
Eric Brust, D.D.S., M.S.  
Michelle Elford, D.D.S.  
Robert Green, D.D.S.  
Nizar Mansour, D.D.S., M.S.  
Marcy Murrell, D.D.S.  
James Olsen, D.D.S.  
Kathy O'Keefe, D.D.S., M.S.  
L.W. Seluk D.D.S., M.S., M.S.  
Brad Stieper, D.D.S., M.S.  
Anthony Valentine, D.D.S.  
Peter Yaman, D.D.S., M.S.

**CHIEF OPERATING OFFICER**  
Mary E. Yakas, B.A., C.M.C.

**VICE-PRESIDENT  
CUSTOMER ENGAGEMENT**  
Linda Bellisario, B.S., R.D.H.

**CREATIVE DIRECTOR**  
Jim Dombrowski

**SCIENTIFIC RESEARCH**  
John A. Molinari, Ph.D.  
Matt G. Cowen, B.S.  
Delaney Graham, B.A.

**CLINICAL ADVISOR**  
Lesley Correll, B.A., B.S., R.D.H.

*Please send inquiries and address changes to:*

**DENTAL ADVISOR**

Ann Arbor, MI 48103  
Call: 800.347.1330 - 734.665.2020  
Fax: 734.665.1648  
Email: [connect@dentaladvisor.com](mailto:connect@dentaladvisor.com)  
Website: [dentaladvisor.com](http://dentaladvisor.com)

*No unauthorized duplication or reprints may be made. Inquiries concerning duplication may be directed to the publisher. Copyright ©2022, Dental Consultants, Inc. All rights reserved. Printed in the U.S.A. (ISSN 0748-4666) by Print-Tech, Inc.*

This publication is printed on paper that is 50% recycled and has 25% post-consumer content.



**CATEGORY: PREPARATION**  
**HANDPIECE: ELECTRIC**  
**NLZ Electric Micromotor System** (NSK America)

**TOP FEATURES:**

**Ergonomic:** Handpiece feels balanced in hand, and lightweight compared to other electric handpieces.

**Powerful:** Offers excellent torque, cutting power, and smooth operation.

**EVALUATOR COMMENTS:**

- "I was skeptical about the weight of electric handpieces until I tried the **NLZ**. It's lightweight and overall a fantastic handpiece."
- "This handpiece cuts through anything with ease, has high torque yet quiet function."



**CATEGORY: PREPARATION**  
**ANESTHETIC DEVICE**  
**CALAJECT™** (RØNVIG Dental Mfg.)

**TOP FEATURES:**

**Smooth Operation:** Auditory alerts for the user on correct speed and pressure for injection.

**Comfortable:** Balances well in clinician's hand and patients reported reduced injection discomfort.

**EVALUATOR COMMENTS:**

- "My hygienist enjoys using this as they do not perform injections as often."
- "Easy to set up, use, and offers a comfortable grip and injection without contorting my hand and fingers."



**CATEGORY: DIRECT RESTORATIVES**  
**SECTIONAL MATRIX**  
**Composi-Tight® 3D Fusion™ Sectional Matrix System** (Garrison Dental Solutions)

**TOP FEATURES:**

**Perfect Contacts:** Coated matrix bands, silicone tips on the retention rings and 3D Fusion wedges ensure a tight interproximal contact.

**Versatile:** Several shapes and lengths are available for every clinical situation.

**EVALUATOR COMMENTS:**

- "I would use this over anything else in every case where a sectional matrix is indicated. Great interproximal contacts and contours."
- "The rings and silicone tips make placement predictable, even on tough preps and short clinical crowns. The rubber tips reduce slippage."



**Clinician:**  
 Dr. Sabiha S. Bunek



**CATEGORY: DIRECT RESTORATIVES**  
**BONDING AGENT: SELF-ETCH**  
**CLEARFIL™ SE Protect** (Kuraray America, Inc.)

**TOP FEATURES:**

**Unique Formulation:** Specialized Monomers, long-term fluoride release, and an antibacterial cavity cleanser assist in reducing sensitivity.

**Combined Dispenser:** Both primer and bond are packaged in a dual-bottle dispenser for ease of use.

**EVALUATOR COMMENTS:**

- "This bonding agent is my go-to self-etch. It offers an excellent bond and trusted results."
- "Having an anti-bacterial element and fluoride release gives confidence for reduced sensitivity over time."



**CATEGORY: DIRECT RESTORATIVES**  
**BONDING AGENT: UNIVERSAL**  
**3M™ Scotchbond™ Universal Plus Adhesive** (3M Oral Care)

**TOP FEATURES:**

**Viscosity:** Material flows well without running off the tooth and evaluators reported full coverage of bonding agent.

**Versatile:** Can be used in self-, total- and selective-etch, eliminating the need for multiple products. No refrigeration is necessary.

**EVALUATOR COMMENTS:**

- "**Scotchbond Universal Plus** allows us to stock one product to bond anything in the office."
- "The combination of the dispenser and the viscosity of the product give me assurance that I am fully coating the restoration. The material is not runny."



**CATEGORY: DIRECT RESTORATIVES**  
**COMPOSITE: HIGHLY-FILLED FLOWABLE**  
**CLEARFIL MAJESTY™ ES Flow** (Kuraray America, Inc.)

**TOP FEATURES:**

**Excellent Handling:** Viscosity is smooth and material does not run or slump. It readily adapts to the tooth and flows where needed.

**Highly Esthetic:** Shade match is excellent and the material polishes to a natural, life-like shine.

**EVALUATOR COMMENTS:**

- "This is my go-to flowable composite. The handling, esthetics, and final polish are superior to anything else I've used."
- "The syringe seems to flow less than other composites I have tried, and no matter where I placed it, it did not run."





**CATEGORY DIRECT RESTORATIVES**  
**COMPOSITE: BULK FILL RESTORATIVE**  
 Admira Fusion x-tra (VOCO)

**TOP FEATURES:**

**Universal Shading:** Blends well and produces a chameleon like effect with a single shade.

**Unique Chemistry:** Ceramic based composite that contains no traditional monomers.



**EVALUATOR COMMENTS:**

- "Outstanding polishability! My assistant noticed that I didn't have to spend as much time polishing as with other composites."
- "This material has a chameleon effect which makes it very versatile and it polishes beautifully!"



**CATEGORY DIRECT RESTORATIVES**  
**RMGI RESTORATIVE**  
 Ionolux (VOCO)

**TOP FEATURES:**

**Direct, Easy Placement:** The delivery gun and capsule design make for an easy application every time.

**Superior Handling:** The material is not sticky, flows well, and sculpts well.



**Clinician:**  
 Dr. Sabiha S. Bunek

**EVALUATOR COMMENTS:**

- "A one-step product. Does not require a conditioner or sealer."
- "Esthetics are very life-like, very close to a composite with the added benefit of fluoride release."



**CATEGORY: DIRECT RESTORATIVES**  
**TEMPORARY FILLING MATERIAL**  
 Temp-it & Temp-it Flow (Spident)

**TOP FEATURES:**

**Viscosity:** Both the flowable and traditional product place well and offer removal in one piece.

**Handling:** Non-sticky placement makes the material firm but flexible and only requires a quick light-cure.



**EVALUATOR COMMENTS:**

- "This product is great for sealing implant screws."
- "A distinct improvement over previous products. Easy to use, easy to place, sets quickly."



**CATEGORY: DIRECT RESTORATIVES**  
**COMPOSITE: SINGLE SHADE**  
**OMNICHROMA & OMNICHROMA Flow**  
 (Tokuyama Dental America, Inc.)

**TOP FEATURES:**

**Single Shade:** No shade selection is necessary as **OMNICHROMA/ OMNICHROMA Flow** has a chameleon effect and blends perfectly with the tooth.

**Ideal Viscosity:** Both products stay where placed, stack well, and are not sticky, making handling effortless.



**EVALUATOR COMMENTS:**

- "I prefer to use flowable for Class V restorations, and I like the esthetics of **OMNICHROMA**. Now I can have it all!"
- "The shade matching of **OMNICHROMA** is exceptional. You do not have to layer and that saves time."



**CATEGORY: DIRECT RESTORATIVES**  
**COMPOSITE: SIMPLIFIED SHADE**  
 G-aenial® A'CHORD (GC America, Inc.)

**TOP FEATURES:**

**Esthetics:** Offers a life-like appearance and excellent shade match with a simple shading system.

**Viscosity:** Material is easy to pack, not sticky, and malleable to create anatomy.



**EVALUATOR COMMENTS:**

- "I really liked the handling and sculptability of the composite. It was firm yet very pliable and could spread it with a light brush like stroke."
- "In anterior situations where I would otherwise have to layer different shades, **G-aenial A'CHORD** blended closely."



**CATEGORY: DIRECT RESTORATIVES**  
**COMPOSITE: UNIVERSAL**  
 Filtek™ Universal Restorative (3M Oral Care)

**TOP FEATURES:**

**Excellent esthetics:** Shade match to the VITA shade guide is excellent and the composite blends well with existing tooth structure.

**Ideal Handling:** **Filtek Supreme Universal Restorative** does not stick to instruments and adapts well to cavity walls.



**EVALUATOR COMMENTS:**

- "Beautiful polish. Looks life-like and shade match is superb."
- "Creamy consistency makes this easy to place and sculpt. The material is not sticky."



**CATEGORY: DIRECT RESTORATIVES**  
**COMPOSITE: BULK FILL FLOWABLE**  
 Venus® ONE Bulk Fill Flow (Kulzer)

**TOP FEATURES:**

**Color Match:** Material has a chameleon effect and matches many shades for an esthetic result.

**Excellent handling:** Viscosity is flowable yet stays where it is placed.

**EVALUATOR COMMENTS:**

- "Very good material that has excellent handling, shade matching, and no capping needed."
- "Nice chameleon effect, color match and polishability."



**CATEGORY: DIRECT RESTORATIVES**  
**SOFT TISSUE RETRACTION PASTE**  
 Traxodent® (Premier Dental Products Company)

**TOP FEATURES:**

**Easy to place:** Offered in syringe and undose forms, the tips can be placed directly into the sulcus and the material has an adaptable viscosity.

**Hemostasis:** Controls bleeding and rinses off easily with no residue.

**EVALUATOR COMMENTS:**

- "Places easily, rinses easily and leaves a clear margin."
- "So much easier than packing cord! Reduces our procedure time."



**CATEGORY: DIRECT RESTORATIVES**  
**GI RESTORATIVE**  
 EQUIA Forte® HT (GC America, Inc.)

**TOP FEATURES:**

**Ease of Placement:** Easy to activate, dispense, and pack, even in areas where moisture control is a challenge.

**Good Esthetics:** Increased translucency allows the material to blend well with existing tooth structure.

**EVALUATOR COMMENTS:**

- "When doing a core buildup and having to pack and contour to create a wall, this material makes it easy while also being less messy."
- "I loved that it set quickly and remained in place. The EQUIA Forte Coat gave a nice finish as well."



**CATEGORY: DIRECT RESTORATIVES**  
**PULPAL PROTECTANT**  
 TheraCal LC® (BISCO)

**TOP FEATURES:**

**Ease of Placement:** Resin based material is easily placed directly from the syringe and can be used as a pulp cap or base/liner.

**Protective:** Stimulates hydroxyapatite and secondary dentin formation.

**EVALUATOR COMMENTS:**

- "Not as messy as other liners and so very simple to use."
- "No manipulation needed at all, unlike other products. Simply inject directly into restoration."



#14 Occlusal

Clinician:  
Dr. Edward Lowe



**CATEGORY: DIRECT RESTORATIVES**  
**COMPOSITE CORE MATERIAL**  
 Visalys® Core (Kettenbach)

**TOP FEATURES:**

**Viscosity:** Stacks well without being runny, making it easy to place.

**Finishing:** Material cuts similar to dentin and is hard without being brittle.

**EVALUATOR COMMENTS:**

- "Consistent mix every time, viscosity was ideal."
- "This feels like dentin, making it easy to prep and finish for an excellent core build-up."



**CATEGORY: DIRECT RESTORATIVES**  
**SILVER DIAMINE FLUORIDE**  
 Riva Star Aqua® (SDI North America)

**TOP FEATURES:**

**Lack of Stain:** Riva Star Aqua has a 2-step process-no stain due to the addition of potassium iodide.

**Quick procedure:** No refrigeration or tissue barrier is required, shortening procedure time.

**EVALUATOR COMMENTS:**

- "Easy two step procedure; really effective as a desensitizer."
- "I really liked that it did not discolor the tooth, and that a tissue barrier is not required. That is a huge advantage."





**CATEGORY: INDIRECT RESTORATIVES**  
**BITE REGISTRATION**  
 Futar® Fast (Kettenbach)

**TOP FEATURES:**

**Consistency:** Offers a smooth impression and is stiff without being brittle.

**Accuracy:** Has high accuracy even in paper thin areas.

**EVALUATOR COMMENTS:**

- "I loved the rigidity and quick set of this material. It was hard without breaking when removed."
- "This material stayed where it was placed, set quickly and removal was a breeze."



**CATEGORY: INDIRECT RESTORATIVES**  
**VPS IMPRESSION MATERIAL**  
 3M™ Imprint™ 4 VPS Impression Material  
 (3M Oral Care)

**TOP FEATURES:**

**Detail Reproduction:** Crisp, clear margins and excellent color contrast.

**Superior Set Time:** Due to a unique self-warming feature, set time is very quick.

**EVALUATOR COMMENTS:**

- "High detail means a great impression every time with no retakes."
- "Patients loved how fast the material set, and it cut my clinical procedure time."



**CATEGORY: INDIRECT RESTORATIVES**  
**ALGINATE**  
 Cavex Cream Alginate  
 (Cavex Holland BV)

**TOP FEATURES:**

**Consistency:** Smooth and creamy mix offers crisp impressions without voids.

**High Detail Reproduction:** Impressions exhibited no voids or tears and were very accurate.

**EVALUATOR COMMENTS:**

- "I love the working time, it sets so fast! It makes it so much better for the patient."
- "The color change contrast is really good and it helps reduce procedure time."



**CATEGORY: INDIRECT RESTORATIVES**  
**ALGINATE ALTERNATIVE**  
 Silginat (Kettenbach)

**TOP FEATURES:**

**Viscosity:** Consistent smooth mixes result in accurate impressions.

**Stability:** Impressions can be poured with a delay and repoured if multiple models are needed.

**EVALUATOR COMMENTS:**

- "Detail was much better than alginate; reliable and consistent impressions every time."
- "Awesome for when I don't want to pour models right away or need multiple pours."



**CATEGORY: INDIRECT RESTORATIVES**  
**PROVISIONAL: UNIVERSAL**  
 Visalys® Temp (Kettenbach)

**TOP FEATURES:**

**Superior Handling:** Material stacks well and does not flow out of matrix.

**Excellent Fit:** Does not lock into undercuts and does not shrink.

**EVALUATOR COMMENTS:**

- "No waiting, fast set time and trims up beautifully with great esthetics."
- "Very strong, minimal air-inhibited layer and finishes great."



**CATEGORY: INDIRECT RESTORATIVES**  
**CEMENT: TEMPORARY NON-EUGENOL**  
 Provicol QM Plus (VOCO)

**TOP FEATURES:**

**Unique Formula:** Contains Calcium Hydroxide which promotes the formation of tertiary dentin and is bacteriostatic.

**Easy Clean Up:** With a two stage cure, cleanup is easy right after placement and after temporary removal.

**EVALUATOR COMMENTS:**

- "Retention with this product was very good. No debonds."
- "Cement stays in the temporary after removal, making clean-up easy before seating the permanent restoration."





CATEGORY: INDIRECT RESTORATIVES

**CEMENT: RMGI**

GC FujiCEM® Evolve (GC America, Inc.)



**TOP FEATURES:**

**Ease of Use:** No separate primer is required, and the dispenser allows for direct placement into the restoration

**Consistent Mix and Viscosity:** GC FujiCEM Evolve provides a homogeneous and smooth mix every time.



**EVALUATOR COMMENTS:**

- "Not having to triturate and directly dispensing is a huge plus."
- "The color is easy to visualize and clean up after tack cure is excellent."



CATEGORY: INDIRECT RESTORATIVES

**CEMENT: SELF ADHESIVE RESIN**

PANAVIA™ SA Cement (Kuraray America, Inc.)

**TOP FEATURES:**

**Universal:** Can be utilized on any substrate without a bonding agent. DENTAL ADVISOR Laboratories tested bond to both Lithium Disilicate and Zirconia and results were outstanding.

**High Bond Strength:** As tested in Dental Advisor Laboratories, bond strength to dentin and enamel were best in class for a self-adhesive cement.

**EVALUATOR COMMENTS:**

- "Easy to use, great viscosity, and cleaned up very easily."
- "It doesn't set up too quickly when tack curing. Hit the light for 1-2 seconds and the excess cement just peels away."



CATEGORY: INDIRECT RESTORATIVES

**CEMENT: ESTHETIC RESIN**

Variolink Esthetic LC (Ivoclar)



**TOP FEATURES:**

**Universal kit:** Includes all components needed to bond to ceramic or composite, including try-in pastes and 5 shades of cement.

**Removal of Excess:** Evaluators reported that removal of excess cement was easy and peeled away at the margin.

**EVALUATOR COMMENTS:**

- "Everything I need is in this kit. The try-in pastes ensure a perfect shade match with every case."
- "Highly esthetic material; great shade selection and it remains stable over time."



CATEGORY: INDIRECT RESTORATIVES

**CEMENT: UNIVERSAL RESIN CEMENT**

3M™ RelyX™ Universal Resin Cement (3M Oral Care)



**TOP FEATURES:**

**Time-Saving:** The small automix syringe allows for quick dispensing

**High Bond Strength:** As tested in DENTAL ADVISOR laboratories, dentin and zirconia bond strengths were the highest ever tested in both self-adhesive and adhesive mode.

**EVALUATOR COMMENTS:**

- "This dispensing system is designed perfectly. It dispenses quickly, without bubbles and is extremely efficient."
- "Easy to use, easy to tack cure, easy to remove excess, and multiple modes available-all excellent!"



CATEGORY: INDIRECT RESTORATIVES

**UNIVERSAL CERAMIC PRIMER**

Monobond™ Plus (Ivoclar)

**TOP FEATURES:**

**Laboratory proven:** DENTAL ADVISOR Laboratories confirmed high bond strengths in several independent studies, achieving bonds to **IPS e.max** CAD of 50 MPa, 40 MPa to **Lava Esthetic Zirconia**, and 60 MPa to stainless steel.

**Universal:** Can be used on all substrates, including metal and composites.

**EVALUATOR COMMENTS:**

- "No refrigeration required! Applying is easy and consistent."
- "I really don't need any other primer in my toolbox using **Monobond Plus**."



CATEGORY: INDIRECT RESTORATIVES

**ZIRCONIA PRIMER**

Z-Prime™ Plus (BISCO)

**TOP FEATURES:**

**Single Bottle:** Drop bottle requires no mixing.

**Good viscosity:** Allows for thorough coating with just a light air dry needed.

**EVALUATOR COMMENTS:**

- "Really easy to use; dispenses well and no mixing required."
- "It wet the surface really well and it was easy to see it was fully coated."





**CATEGORY: INDIRECT RESTORATIVES**  
**ZIRCONIA CLEANER**  
 ZirClean™ (BISCO)



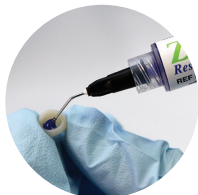
**TOP FEATURES:**

**Simple Delivery:** A syringe allows for direct placement of the cleaner directly into the restoration.

**Viscosity:** Gel consistency provides precise placement.

**EVALUATOR COMMENTS:**

- "Great product with a simple delivery system."
- "Quick process! I didn't have to scrub the surface."



**CATEGORY: ENDODONTICS**  
**ENDODONTIC OBTURATION SYSTEM**  
 elements™ IC (Kerr Endodontics)

**TOP FEATURES:**

**One-Touch, cordless activation:** a 360-degree one touch activation/deactivation ring provides excellent operator control.

**Automated Extrusion:** Gutta percha is automatically extruded from the cartridge once heated.

**EVALUATOR COMMENTS:**

- "Amazing when I see lateral canals filled on radiographs. The long-term success rate of root canal treatment will undoubtedly be higher when using this system."
- "Ergonomics of the handpiece are great; the unit is lightweight and portable."



**CATEGORY: ORAL SURGERY**  
**ORAL SURGERY INSTRUMENT**  
 FRINGS® (TBS Dental)

**TOP FEATURES:**

**Spring loaded:** Forceps auto-retract, which eliminates the need to use your fingers to open them.

**Excellent grip:** Tips are serrated which assist in a firm grip on the tooth.

**EVALUATOR COMMENTS:**

- "The spring loaded feature makes these very ergonomic and easy on my hands."
- "I thought the serrated beaks on the forceps were very useful in gripping teeth fractured off to the roots."



**CATEGORY: INDIRECT RESTORATIVES**  
**RESTORATION CLEANER**  
 Ivoclean (Ivoclar)

**TOP FEATURES:**

**Versatile:** Can be used with all substrates to prepare surface for cementation and bonding.

**Enhanced Bond:** Removal of contaminants prior to seating ensures a stronger bond.

**EVALUATOR COMMENTS:**

- "It is really easy to add this important step to our procedure and the color is easy to see."
- "I feel better using this product and doing everything I can to enhance bonding."



**CATEGORY: ENDODONTICS**  
**DENTAL DAM: NON-LATEX**  
 Isodam® (4D Rubber Company)

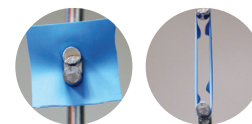
**TOP FEATURES:**

**Tear Resistant:** As tested in DENTAL ADVISOR Laboratories, this dam has a high tear strength.

**Flexible where needed:** Isodam is strong but not rigid and flexes where needed.

**EVALUATOR COMMENTS:**

- "This dam is better than any other I have used. Great product!"
- "Very flexible, does not tear even when challenged. It adapted very nicely exactly where I needed it."



DENTAL ADVISOR  
 Research Report #143



**CATEGORY: ORAL SURGERY**  
**HEMOSTATIC DRESSING**  
 SafeGauze® HemoStat™ (AMD Medicom, Inc.)

**TOP FEATURES:**

**Controlled Hemostasis:** Expands over the surgical site, covering and stopping bleeding immediately.

**Viscous:** The material in its original form is placed and turns to a gel which attaches to mucosa.

**EVALUATOR COMMENTS:**

- "Fast and effective hemostasis. It removed the need to suture weeping sites."
- "Minimum adhesion to the instrument, easy to use, good consistency and stays firm for some time."







**CATEGORY: SMALL EQUIPMENT**  
**AMALGAM SEPARATOR**  
 NXT Hg5® Amalgam Separator (Solmetex)

**TOP FEATURES:**

**Fully Compliant:** ISO Certified for 99% efficiency, **NXT Hg5** complies with the EPA requirement for amalgam separation and containment. Regulated waste is handled by simple removal and mailed in to a recycling service that provides documentation for compliance verification.

**Ease of Use:** No special tools or service technician is necessary to change out the container when full.

**EVALUATOR COMMENTS:**

- "Changing out the canister is a breeze, and the mail in service with verification helps us with our recordkeeping."
- "Great product that does its job. We are helping the environment and improving our suction power as well."



**CATEGORY: SMALL EQUIPMENT**  
**LED CURING LIGHT**  
 Bluephase® PowerCure (Ivoclar)

**TOP FEATURES:**

**Shortened Clinical Procedure Time:** A quick 3-second cure provides excellent bond strength as confirmed in our laboratories.

**Polyvision Technology:** **Bluephase PowerCure** offers a "lane keeping" function which detects light beam anomalies during a cure. It alerts the user to reposition the light and extends curing time to ensure a thorough cure.

**EVALUATOR COMMENTS:**

- "The vibration feature alerting me to readjust is genius. Great innovation."
- "This light has a great feel and balance in my hand, and the swivel tip for difficult to reach areas is excellent."



**CATEGORY: SMALL EQUIPMENT**  
**WHITENING: IN-OFFICE LIGHT ASSISTED**  
 BEYOND® Polus® Advanced Ultra Whitening Accelerator (BEYOND® International, Inc.)

**TOP FEATURES:**

**Advanced Setting Modes:** Several modes allow for customization by patient.

**Filtered Ultrasound Light:** Blocks out heat and UV light which reduces sensitivity.

**EVALUATOR COMMENTS:**

- "**BEYOND** is a wonderful in-office light assisted system that our patients are always satisfied with."
- "So much automation! A motorized arm, touch screens, and countdown clock makes the procedure simple for both my team and our patients."



**CATEGORY: HYGIENE**  
**PREVENTATIVE PRODUCT**  
 MI Paste Plus® (GC America, Inc.)

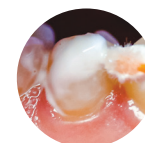
**TOP FEATURES:**

**Sensitivity Reduction:** Containing both Fluoride and **RECALDENT™**, **MI Paste Plus** offers a dual function in remineralizing and recalcification.

**Patient Satisfaction:** Patients were pleased with the immediate reduction in sensitivity.

**EVALUATOR COMMENTS:**

- "The viscosity of the product makes it easy to spread on the teeth, and it adheres well."
- "**MI Paste Plus** is our number one choice to provide to patients for any type of sensitivity. It is very quick acting."



**Clinician:**  
 Dr. Ona Ertt



**CATEGORY: HYGIENE**  
**PROPHY PASTE**  
 Enamel Pro® (Premier® Dental Products Company)

**TOP FEATURES:**

**Excellent Consistency:** **Enamel Pro** polishes smoothly and patients reported a smooth feeling on teeth after polish.

**Remineralizing:** Contains ACP to aid in rapid remineralization.

**EVALUATOR COMMENTS:**

- "This paste goes on smooth, coats well, and has a great final polish."
- "Patients were pleased with the variety of flavors and the taste and feel of the paste."



**CATEGORY: HYGIENE**  
**PEDIATRIC PRODUCT**  
 MI Paste ONE Kids (GC America, Inc.)

**TOP FEATURES:**

**Flavors:** Children enjoy the flavor which helps with compliance in home care.

**Multi-Faceted:** Contains both fluoride and **RECALDENT™** which helps remineralization.

**EVALUATOR COMMENTS:**

- "Both kids and parents loved the variety of flavors, as it motivated children to brush."
- "No residue is left on the teeth, even though it is not designed to be rinsed."





**CATEGORY: HYGIENE**  
**FLUORIDE VARNISH**  
 Profluorid® (VOCO)

**TOP FEATURES:**

**Adheres well:** Even in a moist environment, Profluorid spreads on the teeth well and stays where placed.

**Clear, smooth application:** Evaluators reported a smooth free application with no clumps or voids.

**EVALUATOR COMMENTS:**

- "This varnish applies clear and does not leave a yellowish tint like other varnishes I have used."
- "Easy application, pleasant taste, and reduces patient sensitivity. A win!"



**CATEGORY: INFECTION CONTROL**  
**AIR/WATER SYRINGE TIP**  
 Seal-Tight® (Kerr TotalCare)

**TOP FEATURES:**

**Ease of Use:** A special adapter allows for a secure seal and minimizes o-ring damage

**Dual Chamber:** Separate chambers for air and water eliminate contamination when drying.

**EVALUATOR COMMENTS:**

- "The quality of the adapter and tips is a big difference from other tips we have used."
- "Spray is even and uniform, and the adapter makes insertion easy. The tips can be rotated but stay where placed."



**CATEGORY: DIAGNOSTIC**  
**LED LOUPE LIGHT**  
 Featherlight™ LED Headlight System (Ultralight Optics, Inc.)

**TOP FEATURES:**

**Lightweight:** the weight of the light and cordless feature lower the instance of neck and shoulder fatigue.

**Bright:** Focused, bright light illuminates the clinician's field of vision exactly where light is needed.

**EVALUATOR COMMENTS:**

- "So precise for my field of vision; I use this instead of my overhead light often."
- "Battery life is long, and I don't need to fumble with a control box all the time."



**Clinician:**  
 Dr. Julius E. Bunek



**CATEGORY: INFECTION CONTROL**  
**FACE SHIELD**  
 Ultralight Loupe Face Shield (Ultralight Optics, Inc.)

**TOP FEATURES:**

**Accommodates Loupes:** Fully adjustable to fit all types of loupes and can be customized to mount a light on the outside or extended to fit loupes and headlights.

**Comfortable:** Lightweight and adjustable with ear savers to lessen pressure on the ears.

**EVALUATOR COMMENTS:**

- "This is the most lightweight shield I have found that stayed in place even with my loupes on."
- "Very easy to adjust and maintains that desired position."



**Clinician:**  
 Dr. Julius E. Bunek



**CATEGORY: DIAGNOSTIC**  
**CONE BEAM**  
 CS 9600 (Carestream Dental)

**TOP FEATURES:**

**Intuitive Software:** CS 9600's Smart Pad effectively guides the user through all selections necessary to achieve a quality scan each and every time.

**Intuitive Software:** Easy to navigate and use, has several tools which assist diagnosis.

**EVALUATOR COMMENTS:**

- "The AI-powered positioning provides very consistent high-quality scans and saves each patient's parameters, making rescans much simpler."
- "The versatility of the CS 9600 is amazing. We can evaluate virtually any condition and the AI powered positioning saves each patient profile as we follow the case to completion."



**CATEGORY: INFECTION CONTROL**  
**SURFACE DISINFECTANT:**  
**ALCOHOL-BASED CaviWipes 2.0®** (Kerr TotalCare)

**TOP FEATURES:**

**Quick Contact Time:** 2 minutes of contact time allows for a quick operatory turnaround time.

**Effective:** Approved by EPA for Emerging Viral Pathogens.

**EVALUATOR COMMENTS**

- "The 2-minute efficacy is especially helpful as every minute counts with a busy work day."
- "Caviwipes 2.0 seem to be more wet than the previous version which seems to allow for more surface coverage."





CATEGORY: INFECTION CONTROL

**TOP MASK**

Crosstex™ Surgical Face Masks with Secure Fit™ Technology (HuFriedyGroup)

**TOP FEATURES:**

**Superior Fit:** With a nosepiece and chin piece, the mask securely fits the face, minimizing fogging.

**Comfortable:** A fluid resistant outer layer and soft inner layer combined with fit provides comfortable breathing.

**EVALUATOR COMMENTS:**

- "This mask just fit. It did not fog up my glasses like other masks."
- "Everyone in the office felt you could adjust the mask for a custom fit."



CATEGORY: MISCELLANEOUS

**WHITENING: IN-OFFICE**

Pola Rapid (SDI North America, Inc.)

**TOP FEATURES:**

**Ease of Placement:** Material is dispensed from a syringe with a brush directly on to the teeth.

**No Light Required:** The material is used in office for a rapid result, but does not require a light to accelerate whitening.

**EVALUATOR COMMENTS:**

- "Worked nicely and didn't drive sensitivity on a root exposure patient. I was able to control application due to the syringe design."
- "The quick chair time is amazing. I had patients who have had other in-office whitening procedures comment they this was so much faster and they got better results."



CATEGORY: INFECTION CONTROL

**STERILIZER**

Midmark M11® (Midmark)

**TOP FEATURES:**

**Ease of Operation:** Push button start makes for very easy cycle selection and upon cycle completion, the door opens for drying.

**Capacity:** The sterilizer offers great capacity for cassettes or instruments with a small overall footprint and no separate water system.

**EVALUATOR COMMENTS:**

- "The **M11** is reliable and easy to use. Our assistants love this unit."
- "Instruments are dry at the end of the cycle; the door pops open to begin the drying process."



CATEGORY: MISCELLANEOUS

**BEST VALUE PRODUCT**

MIXPAC™ T-Mixer™ (medmix)

**TOP FEATURES:**

**Excellent Color Coding:** Bright colors eliminate incorrect selection of tips and ensure a correct mix.

**Saves Material:** As tested in DENTAL ADVISOR Laboratories, the unique design produced 25-40% less waste.

**EVALUATOR COMMENTS:**

- "I got a good mix every time and the material seemed easier to extrude."
- "Homogeneous mix and less waste; exactly what is needed to save time and money."



CATEGORY: INFECTION CONTROL

**WATERLINE TEST**

Quick Pass (ProEdge Dental Products)

**TOP FEATURES:**

**In-Office Testing:** **QuickPass** does not require a mail away service to verify results.

**Ease of use:** A simple procedure allows team members to sample and await results.

**EVALUATOR COMMENTS**

- "A nice way to verify that we are treating our waterlines effectively."
- "So easy to use and to obtain quick results."



CATEGORY: MISCELLANEOUS

**SCRAP METAL REFINING SERVICE**

Precious Metal Refining Service (Kulzer)

**TOP FEATURES:**

**Easy to use:** Offers free shipping containers, pre-paid postage and insurance.

**No hidden fees:** No assay or accountability charges to customer.

**EVALUATOR COMMENTS:**

- "Exceptional communication and very quick turnaround time."
- "I should have used this company all of my dental life. Other companies have taken advantage of me."





**CATEGORY: PATIENT PRODUCTS**  
**ORAL HEALING PRODUCT**  
 StellaLife® VEGA® Oral Care Recovery Kit (StellaLife®)

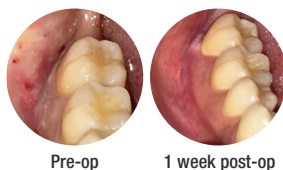
**TOP FEATURES:**

**Non-Narcotic:** A homeopathic remedy which allows for expanded use on patients without a prescription required.

**Accelerated Healing:** The complete kit contains a spray, gel and rinse which provides coverage for all areas of the oral mucosa.

**EVALUATOR COMMENTS:**

- "We provide this to our implant patients and the results are phenomenal."
- "Patients have had less discomfort post-operatively using **StellaLife** than with other products."



**CATEGORY: PATIENT PRODUCTS**  
**TAKE-HOME WHITENING**  
 Wit Essential (FGM)

**TOP FEATURES:**

**Viscosity:** Material flows consistently from syringes and does not run off from the tray.

**High Satisfaction:** Patients were pleased with the complete kit, lack of sensitivity and final result.

**EVALUATOR COMMENTS:**

- "This material is a perfect consistency, producing less waste. There is plenty of gel in the kit for the patient."
- "Both my patients and I were pleased with the results. Patient satisfaction was higher than with other products we've tried."



**CATEGORY: PATIENT PRODUCTS**  
**WHITENING STRIPS**  
 VivaStyle Whitening Strips (Ivoclar)

**TOP FEATURES:**

**Lack of Sensitivity:** Patients did not experience burning or sensitivity during use.

**Adhesive:** Evaluators noted that the strips stayed in place and adhered well without slipping.

**EVALUATOR COMMENTS:**

- "I saw results in only a few days. Seemed to remove stain well."
- "Adhered well with a short wear time and great results. My patient was happy."



**CATEGORY: PATIENT PRODUCTS**  
**TAKE-HOME WHITENING LIGHT-ASSISTED**  
 GLO PRO POWER At Home Wireless Device Kit (GLO Science)

**TOP FEATURES:**

**Lack of Sensitivity:** Patients reported no sensitivity both during and after the procedure.

**Short Procedure Time:** Patients appreciated the four day, 16 minute treatment regimen.

**EVALUATOR COMMENTS:**

- "The patient has used many whitening systems and thought this was the easiest and most effective by far."
- "This was an easy-to-use product and I was able to see major improvements in the brightness of my smile after a short time using it."



**CATEGORY: POLISHERS**  
**CERAMIC POLISHERS**  
 ASAP Indirect + (Clinician's Choice)

**TOP FEATURES:**

**Versatility:** Using the polishers of different shapes in a latch handpiece allows for direct intraoral access.

**Natural luster:** A glaze like polish is achieved in a very short time.

**EVALUATOR COMMENTS:**

- "The access with these polishers allows for a great result in tight areas."
- "The quality and durability of the polishers left a finish that was better than using glaze!"



**MANUFACTURER TESTIMONIAL:**

**GC America: Dr. Gaurav Joshi, Jeremy Faulkner and Jennifer Leuthauser**

"We cherish our partnership with DENTAL ADVISOR because it serves as a trusted source for unbiased, evidence-based information on GC products!"



**CATEGORY: RESEARCH**  
**FLOWABLE COMPOSITE**

**3M™ Filtek™ Supreme Flowable Restorative** (3M Oral Care)

**RESEARCH HIGHLIGHTS:**

Tested to be among the strongest flowable composite mechanically. Fracture toughness rated very high and correlates closely with a material's ability to resist chipping and fracture. Of composites tested in our laboratories, **Filtek Supreme Flowable** had the highest final gloss, which speaks to lower surface roughness clinically. **Filtek Supreme Flowable Restorative** has a unique tip design which reduces the instance of bubbles when dispensing. Bubbles can lead to voids in cured material.



**EVALUATOR COMMENTS:**

- "With predictably no bubbles, I realized how much time and frustration I dealt with when using my previous flowable. It now makes me more efficient and productive."



**CATEGORY: RESEARCH**  
**BULK FILL COMPOSITE**

**3M™ Filtek™ One Bulk Fill Restorative** (3M Oral Care)

**RESEARCH HIGHLIGHTS:**

**Filtek™ ONE** is the strongest bulk fill composite we have tested. **Filtek™ One Bulk Fill** has an excellent radiopacity of 310% equivalence to aluminum. **Filtek™ ONE** was tested with two different Depth of Cure methods and successfully cured 4 mm under different test methods and with three different curing lights. **Filtek™ One Bulk Fill** recorded the highest flexural strength at 183 MPa of any direct composite tested in our lab and a high compressive strength of 347 MPa.



**EVALUATOR COMMENTS:**

- "Easy handling and packable with the convenience and speed of a bulk fill."
- "Adapted seamlessly and placed well in bulk."



**CATEGORY: RESEARCH**  
**BONDING AGENT**

**G2-BOND** (GC America, Inc.)

**RESEARCH HIGHLIGHTS:**

DENTAL ADVISOR Laboratories tested **G2-BOND** after thermocycling for 12 months to determine if the bond was viable. **G2-BOND** can be utilized in all modes as well. Results of the study were excellent as it proved the bond to not only be strong, but durable with repeated thermocycling. **G2-BOND Universal** performed better than **CLEARFIL SE Bond 2** and **Optibond FL** tested in their respective etching modes to dentin and enamel in immediate 24h shear bond strength and after accelerated aging and 12 month storage.



**CATEGORY: RESEARCH**  
**CEMENT SYSTEM**

**G-CEM ONE™** (GC America, Inc.)

**RESEARCH HIGHLIGHTS:**

**G-CEM ONE™** has a unique tooth adhesive primer which enhances bond strength. As tested in DENTAL ADVISOR Laboratories, the cement had a high self-adhesive bond to zirconia and lithium disilicate as well as a high bond strength to dentin and enamel. The primer also eliminates the potential for marginal gap formation. The highest bond strengths were achieved in our laboratories when using the AEP Primer.



**CATEGORY: RESEARCH**  
**CERAMIC BLOCK**

**Amber® Mill & Amber® Mill Direct** (HASSBIO)

**RESEARCH HIGHLIGHTS:**

**Amber® Mill** and **Amber® Mill Direct** performed well in tests in our laboratories. It had a high strength in comparison to other lithium disilicate blocks. **Amber Mill Direct** is a pre-crystallized lithium disilicate block with different strengths for each functional part (from cervical to incisal, 311-399 MPa). This product does not need to be crystallized and achieves minimal machining damage (with more than 98% of the margin intact with no flaws).

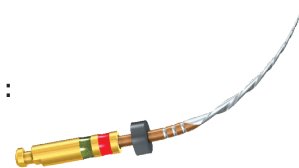


**CATEGORY: RESEARCH**  
**RECIPROCATING ENDODONTIC FILE**

**Procodile Q** (Komet USA)

**RESEARCH HIGHLIGHTS:**

Cutting Efficiency was measured in DENTAL ADVISOR Laboratories and the results were excellent. Overall cutting rate for **Procodile Q** was 16% faster than **WaveOne Gold** with full sequence instrumenting taking an average of 33.5s for **Procodile Q** to 39.5s for **WaveOne Gold**. All Files survived past two canals.



- Detectable unwinding was detected after the three canal instrumented with a competitor file
- in several files, where **Procodile Q** only had 2 instances of unwinding.

# ADDITIONAL TOP PRODUCT AWARD WINNERS

## Absorbent Cheek Pad

**NEODRYS**

*Microcopy Dental*

## Apex Locator

**Coltene CanalPro**

*Coltene*

## Athletic Mouthguard

**SISU Next Gen**

*Ackervall Technologies*

## Bur: Specialty

**Alpen Speedster**

*Coltene*

## Carbide Bur: Multi-Use

**Alpen Carbide**

*Coltene*

## Carbide Bur: Single-Use

**SINGLES (Carbides)**

*Mesinger USA*

## Composite Polisher:

**Multi-Step**

**Twist Polishing Kit**

*Meisinger USA*

## Composite Polisher:

**One-Step**

**Dimanto, VOCO**

## Composite:

**Low-Filled Flowable**

**NovaPro Flow**

*Nanova Biomaterials, Inc.*

## Dental Dam: Latex

**Powder-Free Black Latex**

*Sanctuary Health*

## Denture Adhesive

**OlivaFix Denture Adhesive**

*Bonyf*

## Denture Reline Material

**Sofreliner Tough S**

*Tokuyama Dental America*

## Diamond: Single-Use

**NeoDiamond**

**Microcopy**

## Diode Laser

**Picasso Lite**

*AMD*

## Disposable

**Palmero Dynamic**

**Disposables™ Snapeze**

*HuFriedyGroup*

## Disposable

**Prophy Angle**

**Splatter Guard**

*Young Dental*

## Endodontic Irrigant

**Irritrol**

*Essential Dental Systems*

## Endodontic

**Bioactive Cement**

**NeoMTA 2**

*Avalon Biomed*

## Endodontic Clamp Kit

**Sanctuary Clamp Kit**

*Sanctuary Health*

## Endodontic Sealant

**BioRoot Flow**

*Septodont, Inc.*

## Esthetic Provisional

**Luxatemp Fluorescence**

*DMG America*

## Evacuation Cleaner

**AQ Solution**

*Anterior Quest*

## Fiber Post

**Parapost Taper Lux**

*Coltene*

## Glove: Chloroprene

**Blossom**

*Mexpo International*

## Glove: Fitted

**Qualitouch**

*Smart Practice*

## Glove: Nitrile

**Ultraform**

*Ansell*

## Hand Care

**Hand Essentials**

*HuFriedyGroup*

## Hand Sanitizer

**Purell**

*GoJo Industries*

## Hand Cleanser

**Purell Healthy Soap**

*GoJo Industries*

## Lab Performer:

**Hand Sanitizer**

**Fite Bac, Fite Bac**

## Handpiece

**Maintenance System**

**Quattrocare Plus**

*KaVoKerr*

## Handpiece: Air-Driven

**Tornado LK**

*Bien Air USA*

## Handpiece: Low Speed,

**Air-Driven**

**SMARTmatic S20 HP**

*KaVo Kerr*

## Hands Free HVE

**Mr Thirsty**

*Zirc*

## HVE Tip

**Safe Vac**

*Safe Vac*

## Hygiene Handpiece

**Infinity**

*Young*

## Intraoral Camera

**IRIS Intraoral Camera**

*Digital Doc*

## Lab Performer: Respirator

**Crosstex™ Isolator™ Duckbill**

**Surgical N95 Respirator**

*HuFriedyGroup*

## Lab Performer: Sterilizer

**RH Pro 11**

*CPAC*

## Matrix: Anterior

**Bioclear Anterior Matrix Kit**

*Bioclear*

## Needle

**Septoject Evolution**

*Septodont, Inc.*

## Nitrous Mask

**Accutron™ ClearView™**

**Nasal Mask**

*HuFriedyGroup*

## Online Education

**Hands on LIVE**

*Clinician's Choice*



## Oral Cancer Screening

**OralID**

*Forward Science*

## Retraction Cord

**Knit Pak+**

*Premier Dental Products Co.*

## Rinse

**Tooth & Gums Tonic**

*Dental Herb Co.*

## Sterilization

**Monitoring System**

**Crosstex™ Sterility**

**Assurance System**

*HuFriedyGroup*

## Sterilization Pouches

**SURE-CHECK**

**Sterilization Pouches**

*HuFriedyGroup*

## Temporary

**Therapeutic Device**

**SOVA Nightguard**

*Akervall Technologies*

## Waterline Treatment

**Product**

**DentaPure™ Independent**

**Water Bottle Cartridge**

*HuFriedyGroup*

## Wedge

**3D Fusion Adaptive Wedge**

*Garrison Dental Solutions*

# INNOVATIVE COMPANY OF THE YEAR



Founded in 1972, SDI Limited is a worldwide company with a strong commitment to research and focused on developing and delivering products that are ideal for the dental industry. SDI has been developing glass ionomers for years and has expanded their line of products to create healthier smiles with a minimally invasive approach. Their products align with this mission which is the new frontier in clinical dentistry and adopts the philosophy of integrating prevention, remineralization and minimal intervention.

SDI was chosen as the **Innovative Company of the Year** because of one of their newest products, **Riva Star Aqua**. This product is unique in that it is a 2-step process which reduces staining and is ideally used in a sandwich technique with glass ionomers for maximum benefit. DENTAL ADVISOR Laboratories confirmed a positive zone of inhibition, proof that Riva Star Aqua resists bacteria that can lead to caries formation.

*We rely on SDI to continue to lead the industry with innovations.*

## CONGRATULATIONS!



Riva Star Aqua®



Pola Rapid



Pola Light



Radii Xpert



Aura Bulk Fill



Riva Light Cure HV



**BONDING AGENT: UNIVERSAL**  
**CLEARFIL™ Universal Bond Quick**  
 (Kuraray America, Inc.)

**PREFERRED FEATURE:**

**Reduced clinical procedure time:** No scrubbing is necessary after applying, shortening total procedure time. The MDP monomer creates a strong chemical bond to hydroxyapatite for excellent adhesion.



**EVALUATOR COMMENTS:**

- "Lives up to its name of being quick. Procedure time is definitely shorter using this product!"
- "I found this product really useful when trying to work in high moisture areas where insulation is difficult."



**CEMENT: ADHESIVE**  
**Visalys® CemCore**  
 (Kettenbach)

**PREFERRED FEATURE:**

**Dual Purpose: Visalys® CemCore** can be utilized with the supplied bonding agent as an adhesive cement, but also as a core material.



**EVALUATOR COMMENTS:**

- "It is the perfect viscosity and additionally we experienced no high occlusion after cementation due to the thin film thickness."
- "I like the consistency of this product; it has the same cementation protocol for all restorations."



**CEMENT: RMGI**  
**RelyX™ Luting Plus**  
 (3M Oral Care)

**PREFERRED FEATURE:**

**Homogeneity and consistency of mix:** Evaluators reported a smooth mix of material that was easy to place and remove.



**EVALUATOR COMMENTS:**

- "The material dispensed smoothly and had no bubbles or voids."
- "The automix dispenser makes the procedure quick, and clean up is simple and easy."



**CEMENT: SELF-ADHESIVE**  
**TheraCem® (BISCO)**

**PREFERRED FEATURE:**

**Unique Chemistry:** Calcium and Fluoride Release are added benefits to the self-adhesive nature of the cement.



**EVALUATOR COMMENTS:**

- "Quick tack-cure and cleanup was perfect. No sticky residue."
- "Super thin viscosity and film thickness made it easy to dispense and spread along margins."



**CEMENT: ESTHETIC RESIN**  
**NX3 Nexus™ Third Generation** (Kerr TotalCare)

**PREFERRED FEATURE:**

**Dual-Purpose Universal Kit:** Complete kit has all accessories needed for bonding in any mode, and light or dual cure options.



**EVALUATOR COMMENTS:**

- "This is the easiest cement to use on Veneers, and the light cure shade ability was perfect!"
- "NX3 cures hard even without using a light, and removal of excess was easy before final set."



**COMPOSITE: BULK FILL RESTORATIVE**  
**Aura Bulk Fill**  
 (SDI North America, Inc.)

**PREFERRED FEATURE:**

**Great Handling:** Composite does not stick to instruments and adapts well to cavity walls



**EVALUATOR COMMENTS:**

- "This composite blends better than other bulk fills I have tried."
- "Aura Bulk Fill was easy to extrude, manipulate, and it polished beautifully."





**COMPOSITE: BULK FILL FLOWABLE**

**Bulk EZ™ PLUS**  
(Zest Dental Solutions)

**PREFERRED FEATURE:**

**Unlimited depth of cure:** Bulk EZ™ PLUS has a dual cure function for complete cure.

**EVALUATOR COMMENTS:**

- "Saves time by being able to flow material into the prep in larger increments."
- "So nice to know composite is completely cured with the dual-cure. That is always a question with deep light-cured bulk fill composites."



**COMPOSITE CORE MATERIAL**

**LuxaCore Z Dual**  
(DMG America LLC)

**PREFERRED FEATURE:**

**Smooth viscosity:** Easy to dispense and place, flows well and adapts to preparation.

**EVALUATOR COMMENTS:**

- "Viscosity is just right and the tips help material stay where you place it."
- "Dual-cured feature gives me more confidence in deep-layer polymerization."



**COMPOSITE: LOW-FILLED FLOWABLE**

**ES Flow®** (Spident)

**PREFERRED FEATURE:**

**Handling:** Excellent viscosity of the material as well as a controlled flow with no slumping or running.

**EVALUATOR COMMENTS:**

- "Flows and adapts well into the prep, adapts to walls well and polishes really nicely."
- "Easy to place, flows well, stays put and does not run or slump."



**COMPOSITE: SIMPLIFIED SHADE**

**SimpliShade** (Kerr)

**PREFERRED FEATURE:**

**Simplified Shade Match:** Less shades to choose from translate to shorter clinical procedure time.

**EVALUATOR COMMENTS:**

- "Very useful in most clinical cases with minimal inventory or material needed."
- "Excellent handling characteristics with a superior chameleon effect, even without blockers."



**ENDODONTIC OBTURATION SYSTEM**

**Dia-Duo Cordless Obturation System**  
(DiaDent® Group International, Inc.)

**PREFERRED FEATURE:**

**Cordless Operation:** This system heats quickly, holds a charge, and allows for both devices to maneuver easily around the tooth due to tip design.

**EVALUATOR COMMENTS:**

- "I was impressed at how easy this gun is to use and became very comfortable with it."
- "This is by far the most flexible tip I have ever used in an obturator."



**EVACUATION CLEANER**

**Monarch® CleanStream**  
(Air Techniques)

**PREFERRED FEATURE:**

**Hands-Free dispenser:** Hoses attach horizontally to the innovative dispenser and a seal is created to assist the pull of suction.

**EVALUATOR COMMENTS:**

- "Very efficient, smells nice, and we experienced improvement in suction after just one use."
- "Can suction hands free and use in multiple rooms without having to refill after each room."





**FIBER POST**  
Glassix Plus  
(Nordin Dental)



**PREFERRED FEATURE:**

**Retentive post design:** Twisted grooves increase retention and make trimming easier.

**EVALUATOR COMMENTS:**

- "The drills were excellent. They cut smoothly, sharp and without chatter. The post seated perfectly."
- "Good radiopacity and excellent light transmission."



**FLUORIDE VARNISH**  
FluoroDose®  
(Centrix Dental)



**PREFERRED FEATURE:**

**Smooth Viscosity:** Applies smooth, dries clear and does not clump when saliva is present.

**EVALUATOR COMMENTS:**

- "Packaging is easy to open and varnish is easy to apply, goes on smooth."
- "This is definitely less sticky than other brands; my patients loved the flavor."



**HANDPIECE: AIR-DRIVEN**  
Ti-Max Z900L (NSK America)



**PREFERRED FEATURE:**

**Smooth Cutting:** No vibration or chatter and a concentric cut during operation.

**EVALUATOR COMMENTS:**

- "Cut through crowns and teeth with ease. No stalling."
- "Slim neck, good visibility, even water spray and great illumination. A great handpiece."



**HANDS FREE HVE**  
Dry Shield™  
(Solmetex)



**PREFERRED FEATURE:**

**All In One Solution: Dry Shield** provides isolation, evacuation of oral fluids via HVE, retraction of the cheeks, shielding of the tongue, protection of the airway, and a bite block in one device.

**EVALUATOR COMMENTS:**

- "Great isolation, retraction, and ability to work independently."
- "Multiple mouthpiece sizes available, and they are soft and comfortable for the patient."



**LED CURING LIGHT**  
Radii XPert  
(SDI North America, Inc.)



**PREFERRED FEATURE:**

**Multifunction: Radii XPert** can be utilized for curing all composites, cements, and for transillumination as well as accelerated whitening.

**EVALUATOR COMMENTS:**

- "The small head allowed for convenient maneuverability and was easy to rotate for any curing location."
- "The design of this light allows for a good grip and access to some difficult areas."



**LED HEADLIGHT**  
Firefly® Cordless Headlight System  
(DenMat®)



**PREFERRED FEATURE:**

**Ease of Use and Portability:** Cordless feature makes movement and visualization easy for the operator.

**EVALUATOR COMMENTS:**

- "This is the first cordless loupe light I've used and it is a great feature. I never had to worry about getting tangled up in the cord or having to reach down in my pocket or on my waistband to turn the light on or off."
- "I have not noticed a difference in weight on my nose with Firefly when compared to my current light."



**MULTI-STEP COMPOSITE POLISHER**

**Super-Snap X-Treme**  
(SHOFU Dental)

**PREFERRED FEATURE:**

**Non-Metal Durable Discs:** *Super-Snap X-Treme* does not have a metal center which can scratch restorations during polishing.

**EVALUATOR COMMENTS:**

- "Great adaptation to contours due to the flexibility."
- "Excellent Finish; the disks are durable and seem to require less force to achieve results."



**NEEDLE**

**Transcendent Painless Injection Needle**  
(medmix)

**PREFERRED FEATURE:**

**Sharpness of Bevel:** Design allows for a smooth injection

**EVALUATOR COMMENTS:**

- "Slides into tissue smoothly; does not drag."
- "I like the bevel orientation mark. Dependable, high quality product."



**ONE-STEP COMPOSITE POLISHER**

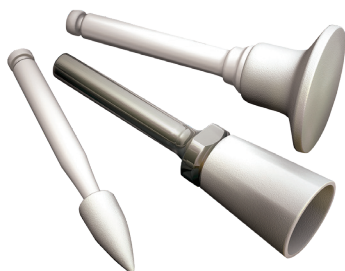
**OneGloss** (SHOFU Dental)

**PREFERRED FEATURE:**

**Durable:** the one-step system is simple to use and pressure sensitive for a complete polish.

**EVALUATOR COMMENTS:**

- "Great polish and minimal polishing debris during use."
- "Very durable. OneGloss does not break down when you exert pressure; I can finish and polish just by adjusting pressure."



**ORAL CANCER SCREENING**

**Goccles®** (Pierrel Pharma)

**PREFERRED FEATURE:**

**Ease of Integration:** No additional solutions or lights are necessary. A curing light will effectively illuminate the field.

**EVALUATOR COMMENTS:**

- "My patients commented and were aware this technology was screening for oral cancer lesions."
- "This product is so simple to use and showed lesions much more clearly than what I have used in the past."



**PEDIATRIC PRODUCT**

**TheraCal PT** (Bisco Inc.)

**PREFERRED FEATURE:**

**Unique Formula:** An alkaline pH promotes pulp vitality, has calcium release and a hydrophilic resin base which makes it moisture tolerant.

**EVALUATOR COMMENTS:**

- "This is a leap of improvement over other pulpotomy products! It is directly dispensed and works quickly."
- "Great consistency – it flows well while adapting to surfaces... even axial walls."



**RMGI RESTORATIVE**

**Riva Light Cure HV** (SDI North America, Inc.)

**PREFERRED FEATURE:**

**Viscosity:** *Riva Light Cure HV* is highly viscous, making it easy to stack and sculpt without slumping.

**EVALUATOR COMMENTS:**

- "Material provides good adaptation to the tooth, finishes nicely and sets quickly."
- "Excellent mix every time. This places quickly and easily and can be light cured to speed up the process."





**SOFT TISSUE MANAGEMENT PASTE**  
**3M™ Astringent Retraction Paste**  
 (3M Oral Care)

**PREFERRED FEATURE**

**Unique Delivery:** *3M Astringent Retraction Paste* has a tip that is designed to fit into the sulcus and express material to achieve hemostasis.

**EVALUATOR COMMENTS:**

- "The ease of extrusion and the hemostatic properties of this material are excellent!"
- "The thin tip fits gently into the sulcus and the material rinses away effortlessly."



**TEMPORARY NON-EUGENOL CEMENT**  
**Temp-Bond™ NE** (Kerr Restoratives)

**PREFERRED FEATURE:**

**Viscosity:** Has a consistent and smooth mix, flows well, and allows for easy removal of excess.

**EVALUATOR COMMENTS:**

- "Strong but allows for easy removal of the temporary."
- "Controlled dispensing gives just the right amount and ensures adhesion without too much excess."



**TEMPORARY FILLING MATERIAL**  
**Tempit-E** (Centrix Dental)

**PREFERRED FEATURE:**

**Viscosity:** Has a consistent and smooth mix, flows well, and allows for easy removal of excess.

**EVALUATOR COMMENTS:**

- "Strong but allows for easy removal of the temporary."
- "Controlled dispensing gives just the right amount and ensures adhesion without too much excess."



**VPS IMPRESSION MATERIAL**  
**Panasil®** (Kettenbach)

**PREFERRED FEATURE:**

**Detail Reproduction:** *Panasil* provides clear color contrast and crisp, detailed margins.

**EVALUATOR COMMENTS:**

- "I never have voids or tears in my impressions. The light body flows beautifully."
- "No moisture contamination. Clear impressions even when saliva is in the area."



**WATERLINE TREATMENT PRODUCT**  
**Monarch® Lines Cleaner**  
 (Air Techniques)

**PREFERRED FEATURE:**

**Research of Bacterial Concentrations:** As tested over a three month period, concentrations of bacteria in waterlines were at or below CDC recommendations.

**EVALUATOR COMMENTS:**

- "It gives me confidence to know our waterlines are properly treated for our patient's safety."
- "Patients commented that the taste of the water felt fresh and clean."



**WHITENING: TAKE-HOME LIGHT ASSISTED**  
**Pola Light** (SDI North America, Inc.)

**PREFERRED FEATURE:**

**Ready to use:** Preformed tray with light can be delivered in office to instruct patient on use.

**EVALUATOR COMMENTS:**

- "Comfortable wear, quick results, easy cleanup, and no sensitivity."
- "The results were great in a short amount of whitening time. Also, it was very easy to use."



## ADDITIONAL PREFERRED PRODUCT AWARD WINNERS

### Absorbent Cheek Pad

#### Reflective Shields Plus

Richmond Dental

### Air/Water Syringe Tip

#### Flash Tips

Dentsply Sirona

### Alginate

#### KromaFaze®

Kerr TotalCare

### Alginate Alternative

#### Xantasil®

Kulzer

### Anesthetic Device

#### Dentapen

Septodont, Inc.

### Anesthetic Buffering System

#### Onset®

Onpharma

### Apex Locator

#### ApexID™

Kerr TotalCare

### Bonding Agent: Self-Etch

#### Bond Force®

Tokuyama Dental America

### Bur: Multi-Use Carbide

#### Great White #2

SS White Burs

### Bur: Single Use Carbide

#### NeoBurr®

Microcopy

### Bur: Single-Use Diamond

#### Komet Single Use Diamonds

Komet USA

### Bur: Specialty

#### Occlusal Reduction Kit

Meisinger USA LLC

### Composite: Highly-Filled Flowable

#### G-Aenial Universal Injectable

GC America, Inc.

### Composite: Bulk Fill Restorative

#### Luna

SDI North America, Inc.

### Dental Dam: Latex

#### Nic Tone Latex

MDC Dental

### Dental Dam: Non-Latex

#### HEDY Polyisoprene

#### Non-Latex Dental Dam

HEDY Canada

### Desensitizer

#### Shield Force Plus®

Tokuyama Dental America, Inc.

### Disposable

#### SteriPocket

Richmond Dental

### Disposable Prophy Angle

#### 2 Pro®

Premier Dental Products Co.

### Endodontic Bioactive Cement

#### MTA Repair HP

Angelus

### Endodontic Sealer

#### NeoSEALER Flo®

Avalon Biomed

### GI Restorative

#### Fuji IX GP Restorative

GC America, Inc.

### Glove: Chloroprene

#### Micro-Touch Denta-Glove

#### Green Neoprene

Ansell

### Handpiece: Electric

#### ELECTromatic™

Kerr TotalCare

### Handpiece: Hygiene

#### iStar® Cordless Hygiene Handpiece

DENTAL EZ

### HVE Tip

#### M.A.S.S. (Multi-Axis Sprial Suction)

Ghost Mfg.

### Mask

#### VIBE, Pro 2 Solutions

### Matrix: Anterior

#### Uveneer, Ultradent

### Matrix: Sectional

#### V3 Ring

Ultradent

### Nitrous Mask

#### Accutron™ Axess™ Low-Profile Nasal Mask

HuFriedyGroup

### Oral Surgery Instrument

#### Plus Series Forceps

A.Titan

### Preventive Product

#### Remin Pro

VOCO

### Primer: Universal Ceramic

#### CLEARFIL™ Ceramic Primer Plus

Kuraray America, Inc.

### Retraction Cord

#### Short Cut

Kerr TotalCare

### Surface Disinfectant Wipes

#### PURELL Surface Disinfectant Wipes

GoJo Industries, Inc.

### Temporary Therapeutic Device

#### Nite Bite®

Randmark Dental Products, LLC

### Wedge

#### VursaWedge

Young Innovations, Inc.

### Whitening System: In-Office

#### Light Assisted

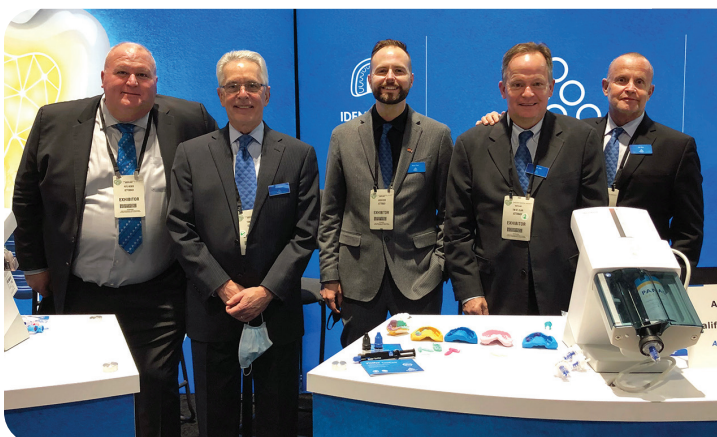
#### Sinsational Smile

Sinsational Smile

### Whitening: Take-Home

#### NuRadiance Classic

Nu Radiance



## MANUFACTURER TESTIMONIAL

### Kettenbach

"For years, we have found working with DENTAL ADVISOR to be ideal in providing us with well-structured and meaningful feedback in product evaluations. As a respected third-party evaluator, we find that our customers appreciate the independent review to be non-biased and thorough...offering meaningful technology input in making purchase decisions."

**Daniel Parilli**  
General Manager

# DA DENTAL ADVISOR™

Product insights you can trust.



## A legacy of integrity

Over the past 39 years, DENTAL ADVISOR editors have gathered to research, discuss and evaluate the products you use every day. The result? Information that has integrity. Never influenced by advertising or sponsorship.

**Just good science and clinical observations.**

[dentaladvisor.com](http://dentaladvisor.com)

Call out to the dental professional community:  
**Join our Clinical Advisory team**

**DA DENTAL  
ADVISOR**

Celebrating  
**40**  
YEARS



We are celebrating  
**40 years as Trusted  
Advisors in dentistry!**  
Come join our Clinical  
Advisory team and be  
on the cutting-edge as  
an early adopter of the  
latest innovations in  
the market.

Join your colleagues of **more than  
300 dental professionals** across the country.

**To learn more:**  
contact Lesley Correll,  
BA, BS, RDH at [lesley@  
dentaladvisor.com](mailto:lesley@<br/>dentaladvisor.com) for  
more information



*As a clinical consultant you are able to be on the cutting edge as an early adopter of the latest dental products and equipment.*  
**You and your team have an opportunity to influence the future of dentistry.**

## 2023 Award-Winning Products



**Dr. Sabiha S. Bunek**



**Dr. Ona Erdt**

*Presented by DENTAL ADVISOR Editor-in-Chief and CEO, Dr. Sabiha S. Bunek,  
and, Dr. Ona Erdt*

It is often challenging for clinicians to keep abreast of the vast array of materials and equipment on the market. In this course, you will learn which products received high accolades in their particular product category. For 39 years, DENTAL ADVISOR has provided the dental industry with trusted information on products and equipment. Participants will leave with a valuable update on the latest products and techniques to take back and implement into daily practice for saving time, minimizing stress and maximizing productivity.

### Course Objectives:

*During this course, attendees will:*

- Understand the process by which products are chosen for awards.
- Understand products that solve common clinical challenges or that simply increase efficiency and effectiveness.
- Learn about the latest products including unique features, advantages and techniques for successful clinical use.
- Gain a better understanding of new and exciting areas in dentistry and how to educate themselves and their teams.

To arrange for Dr. Bunek to speak to your group, connect with us  
at [connect@dentaladvisor.com](mailto:connect@dentaladvisor.com) or at (734) 665-2020

*Presented in cooperation with our  
online education partners at [vivalearning.com](http://vivalearning.com)*

