

2022 Awards

TOP & PREFERRED PRODUCT AWARDS



TheraCal LC®
BISCO



Bluephase® PowerCure
Ivoclar



CLEARFIL™ SE Protect
Kuraray America, Inc.



GC FujiCEM® Evolve
GC America, Inc.



**Featherlight™ LED
Headlight System**
Ultralight Optics, Inc.



**Ultralight Loupe
Face Shield**
Ultralight Optics, Inc.



Sinsational Smile
Sinsational Smile, Inc.



Visalys® CemCore
Kettenbach



G-aenial™ Universal Injectable
GC America, Inc.



Pola Rapid
SDI



OMNICHROMA & OMNICHROMA Flow
Tokuyama Dental America, Inc.



TOP & PREFERRED PRODUCT AWARDS



Dr. Sabiha S. Bunek
CEO & Editor-in-Chief

Welcome to 2022! Looking back on all of the wonderful products we have had the privilege to evaluate over the years, it's been an exciting journey to watch companies and products stand the test of time in both the laboratory and in clinical practice. It's also been an exhilarating experience to see a growing number of new and innovative companies entering the landscape of dentistry.

It is an ongoing mission of DENTAL ADVISOR to provide evidence-based and clinically relevant information to the dental profession. Our **Top Awards** and **Preferred Products** are highly sought after in the industry due to our objective clinical evaluation combined with custom laboratory testing. Throughout the year, our experienced evaluators provide us with valuable and constructive feedback on the latest innovations introduced to dental community. This assessment from operator and laboratory clinical evaluators along with our awesome team at the DENTAL ADVISOR, gives me great enthusiasm and confidence in sharing our results!

Many companies ask how are these awards achieved and how do they make the list? The answer is very straight forward and without compromise. Our awards are provided only to companies that have their products evaluated by our group of unbiased, clinical evaluators, and also in our laboratories, which we follow over the long term. As we enter our 39th year, we offer endless thanks to our team and industry leaders for continuing to support our research and publication. As always, I welcome your comments and suggestions and can be reached at drbunek@dentaladvisor.com.



Dr. Jessica Rubin



Dr. Matthew Miller



Dr. James Johnson

THANK YOU DENTAL ADVISOR CONSULTANTS!

DENTAL ADVISOR would like to thank our network of dental consultants that has now grown to over 350 during the last 38 years.

Pictured here are a few of our consultants who evaluate our products. Thank you for all you do.

We are looking forward to seeing everyone in person again in the near future.



Dr. Gary Bloomfield



Dr. Jack Nash



Dr. Salvatore J. La Mastra



Dr. Ravichandra Juluri



Dr. Phing Sauer



Dr. Ashton Prince

If you would like to be featured in a future issue of DENTAL ADVISOR, please contact Creative Director, Jim Dombrowski at jim@dentaladvisor.com

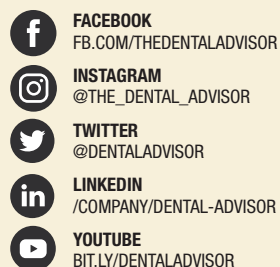
JAN/FEB 2022

VOL. 39, NO. 1



Product insights you can trust.

FOLLOW US ON SOCIAL MEDIA



PUBLISHER: DENTAL CONSULTANTS, INC.

John M. Powers, Ph.D.
Sabiha S. Bunek, D.D.S.

EDITOR-IN-CHIEF

Sabiha S. Bunek, D.D.S.

EDITORIAL BOARD

Gary Bloomfield, D.D.S.
Julius Bunek, D.D.S., M.S.
Eric Brust, D.D.S., M.S.
Michelle Elford, D.D.S.
Robert Green, D.D.S.
Nizar Mansour, D.D.S., M.S.
Marcy Murrell, D.D.S.
James Olsen, D.D.S.
Kathy O'Keefe, D.D.S., M.S.
L.W. Seluk D.D.S., M.S., M.S.
Brad Stieper, D.D.S., M.S.
Anthony Valentine, D.D.S.
Peter Yaman, D.D.S., M.S.

CHIEF OPERATING OFFICER

Mary E. Yakas, B.A., C.M.C.

CLINICAL EDITOR

Ona Erdt, D.M.D., C.D.A., M.S.H.S.

CLINICAL ADVISOR

Lesley Correll, B.A., B.S., R.D.H.

RESEARCH

John A. Molinari, Ph.D.
Matt G. Cowen, B.S.
Delaney Graham, B.A.

DESIGN

Jim Dombrowski
Heather McCausland, B.A., M.B.A.

VICE-PRESIDENT CUSTOMER ENGAGEMENT

Linda Bellisario, B.S., R.D.H.

Please send inquiries and address changes to:

DENTAL ADVISOR

Ann Arbor, MI 48103

Call: 800.347.1330 - 734.665.2020

Fax: 734.665.1648

Email: connect@dentaladvisor.com

Website: dentaladvisor.com

No unauthorized duplication or reprints may be made. Inquiries concerning duplication may be directed to the publisher. Copyright ©2022, Dental Consultants, Inc. All rights reserved. Printed in the U.S.A. (ISSN 0748-4666) by Print-Tech, Inc.

This publication is printed on paper that is 50% recycled and has 25% post-consumer content.



CATEGORY: PREPARATION

HANDPIECE: ELECTRIC

NLZ Electric Micromotor System (NSK America)

Award-Winning Features:**Lightweight and Balanced:**

The short length of the motor provides excellent balance and grip, and evaluators reported **NLZ** to be lighter than other electric handpieces.

Excellent torque and speed:

NLZ provides superior cutting power and cuts smoothly without chatter or stalling.

Evaluator Comments:

- "This is by far the best electric handpiece system I have ever used. I do not feel any hand fatigue or strain."
- "The interface of the handpiece controls are so simple, it makes our life easier. This cuts efficiently and precisely."



CATEGORY: DIRECT RESTORATIVES

SECTIONAL MATRIX

Composi-Tight® 3D Fusion™
Sectional Matrix System
(Garrison Dental Solutions)

Award-Winning Features:

Effortless Tight Contacts: The strong rings are retentive and fit well to the tooth, with retention extensions anchoring the ring to the tooth. The silicone tips prevent slippage and minimize and prevent flash.

Complete kit for every clinical situation: A short ring, tall ring, and short wide ring are available to use for pediatric and adult cases, and large preparations.

Evaluator Comments:

- "The ring design makes placement predictable on tough preps, short clinical crowns and other challenging areas. The rubber ends of the rings result in minimal slippage. **3D Fusion** wedges adapted better than others and stayed in place."
- "The combination of the tab on the matrix band and the silicone coating makes band removal effortless."



Clinician:
Dr. Sabiha S. Bunek



CATEGORY: DIRECT RESTORATIVES

BONDING AGENT: UNIVERSAL

3M™ Scotchbond™ Universal Plus Adhesive (3M Oral Care)

Award-Winning Features:

Versatile: Evaluators reported **Scotchbond Universal Plus Adhesive** to be a truly universal adhesive, for use in all direct and indirect restorative applications, without the need for multiple products.

Outstanding Laboratory Values: As tested in DENTAL ADVISOR Laboratories, **Scotchbond Universal Plus Adhesive** achieved high bond strengths to dentin, enamel, glass ceramics, and zirconia in both self-etch and total-etch modes.

Evaluator Comments:

- "**Scotchbond Universal Plus Adhesive** truly streamlines our workflow; having one product that covers so many indications simplifies things."
- "The thin film thickness and viscosity of the product provides confidence that I am achieving a uniform bond."



CATEGORY: PREPARATION

ANESTHETIC DEVICE

CALAJECT™ (RØNVIG Dental Mfg.)

Award-Winning Features:

Ergonomic: Evaluators noted that the pen grip was extremely comfortable and provided a comfortable hand and finger position for smooth injections.

Easy operation: Clear auditory indicators alert the user on proper speed and pressure, and remaining anesthesia amounts are visible.

Evaluator Comments:

- "No special needles or hoses are necessary; easy set-up, easy operation, and comfortable grip in my hands without thumb pain."
- "I was amazed at how precise this unit was, and every single patient loved it."



CATEGORY: DIRECT RESTORATIVES

BONDING AGENT: SELF-ETCH

CLEARFIL™ SE Protect (Kuraray America, Inc.)

Award-Winning Features:

Specialized Monomer: Combining long-term fluoride release and anti-bacterial cavity cleansers allow **Clearfil SE Protect** to successfully reduce sensitivity.

Resistance to microleakage and discoloration at the margin: Several long-term clinical studies conducted by DENTAL ADVISOR show excellent resistance to discoloration and microleakage.

Evaluator Comments:

- "Excellent bond strength and my go-to for reliable results."
- "This bonding agent has proven itself over time to be the gold standard in self-etch materials."



CATEGORY: DIRECT RESTORATIVES

COMPOSITE: HIGHLY-FILLED FLOWABLE

CLEARFIL MAJESTY™ ES Flow (Kuraray America, Inc.)

Award-Winning Features:

Flowability: The superior viscosity of **CLEARFIL Majesty ES Flow** allows for placement without running or slumping, adapts well to cavity walls, and flows seamlessly into narrow areas and undercuts.

Unique Finishing and Esthetics: In cases where no occlusal adjustment is necessary, **CLEARFIL Majesty ES Flow** can be wiped with alcohol to produce a glossy surface. Evaluators reported esthetics to be outstanding in all classes of restorations.

Evaluator Comments:

- "I use **Clearfil Majesty ES Flow** regularly in areas of incipient decay. It flows well, is very esthetic and polishes easily."
- "The material blended so well with the tooth structure that you had to look hard to find the interface."





CATEGORY: DIRECT RESTORATIVES
COMPOSITE: BULK FILL RESTORATIVE
Admira Fusion x-tra (VOCO)

Award-Winning Features:

Universal Shading:

Posterior bulk-fill, ceramic-based composite that blends well and produces a chameleon effect.

Sculptable and Polishable:

Evaluators noted that **Admira Fusion x-tra** was easily placed and polished to a lifelike appearance.



Evaluator Comments:

- "This material has a chameleon effect and blends well with the adjacent tooth structure."
- "Great polishability and versatile with easy handling."



CATEGORY: DIRECT RESTORATIVES
TEMPORARY FILLING MATERIAL
Temp-it & Temp-it Flow (Spident)

Award-Winning Features:

Excellent Handling:

Evaluators noted that **Temp-it** and **Temp-it Flow** allowed for versatile placement, did not slump, stacked where needed, and was easy to sculpt when necessary.

Color Option: Having a color contrast of blue was helpful for evaluators, since the material is used for temporary filling.

Evaluator Comments:

- "Material sets firm but is easy to remove when you need to."
- "Handles so well, not sticky like other products I have used. The blue contrast color is genius!"



CATEGORY: DIRECT RESTORATIVES
COMPOSITE: UNIVERSAL
Filtek™ Universal Restorative (3M Oral Care)

Award-Winning Features:

Esthetics: Evaluators found the composite to be highly esthetic, and shade match to the VITA shade guide very accurate.

Excellent Handling: **Filtek Universal Restorative** was noted by evaluators to have superior handling, good viscosity, and was easy to pack and sculpt.

Evaluator Comments:

- "I liked the ease of control at the margins for occlusal and interproximal restorations. This is my go-to universal composite."
- "Polished beautifully! Wonderful final surface finish."



CATEGORY: DIRECT RESTORATIVES
RMGI RESTORATIVE
Ionolux (VOCO)

Award-Winning Features:

Outstanding Handling: Evaluators found **Ionolux** to flow well, sculpt well, and was not sticky.

Quick and Easy Placement: The capsule design allows for direct placement into the cavity, without a need for conditioning or sealing

Evaluator Comments:

- "Esthetics are great with this material. Very lifelike."
- "Light-cure feature to control the set is an advantage; less waiting."



Clinician:
 Dr. Sabiha S. Bunek



CATEGORY: DIRECT RESTORATIVES
COMPOSITE: SIMPLIFIED SHADE
OMNICHROMA & OMNICHROMA Flow (Tokuyama Dental America, Inc.)

Award-Winning Features:

Single Shade Match:

OMNICHROMA and **OMNICHROMA Flow** are designed to match any shade on the VITA shade system, making the time consuming process of shade selection disappear.

Superior Handling: Evaluators reported both **OMNICHROMA** and **OMNICHROMA Flow** to be non-sticky, stay where placed, pack well, stack well and handle beautifully.

Evaluator Comments:

- "The color matching was superb. I already use **OMNICHROMA** and this is great addition to the family of products."
- "The **BLOCKER** is an excellent tool. Use it to mask show-through from the oral environment."



CATEGORY: DIRECT RESTORATIVES
SOFT TISSUE RETRACTION PASTE
Traxodent® (Premier Dental Products Company)

Award-Winning Features:

Complete Hemostasis and Excellent Retraction:

Evaluators noted that **Traxodent** controlled tissues well and provided a well defined margin for impressions.

Time Saving: No packing of cord is necessary, as **Traxodent** acts in place of cord. Patient comfort was rated high, as no pressure is felt during placement of material.

Evaluator Comments:

- "I have used **Traxodent** with my two-cord system and the results are great."
- "Easy to use; rinses off completely."





CATEGORY: DIRECT RESTORATIVES

GI RESTORATIVE

EQUIA Forte® HT (GC America, Inc.)

Award-Winning Features:

Bulk-Fill Function: Evaluators noted that **EQUIA Forte HT** was very easy to place and pack.

Versatile Esthetics: **EQUIA Forte HT** has increased translucency which make it adaptable to many clinical indications, including pediatric and geriatric cases where caries risk is high.

Evaluator Comments:

- "Nice finish and polish with the **EQUIA Forte Coat**. The flip top lid on the bottle is great!"
- "When doing a core buildup and having to pack and contour to create a wall, this material makes it easy while also being less messy."



CATEGORY: DIRECT RESTORATIVES

PULPAL PROTECTANT

TheraCal LC® (BISCO)

Award-Winning Features:

Direct Placement and Immediate Set: Evaluators appreciated the small syringe for direct delivery and the ability to light-cure for an immediate set. Ease of placement was commented on by all clinicians.

Consistency of Mix: Since **TheraCal LC** is delivered in syringe form, there is no need to mix. Evaluators reported a smooth application and consistent mix of material every time.

Evaluator Comments:

- "Light-cure feature is a great advantage."
- "I love that it's a one-step application. No mixing is required."



#14 Occlusal



Clinician:
Dr. Edward Lowe



CATEGORY: INDIRECT RESTORATIVES

COMPOSITE CORE MATERIAL

Visalys® Core (Kettenbach)

Award-Winning Features:

Superior Handling:

Evaluators reported the viscosity of Visalys Core to flow well while still being stackable. Consistency of the material and the ability to sculpt and shape were favorite characteristics.

Cuts Like Dentin: **Visalys Core** is smooth and void free, trims well, and has an excellent final surface finish.

Evaluator Comments:

- "Excellent viscosity for post cementation."
- "Being able to use any adhesive simplifies my procedure set-up."



CATEGORY: INDIRECT RESTORATIVES

RETRACTION CORD

Knit-Pak™+ (Premier Dental Products Company)

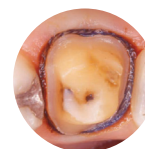
Award-Winning Features:

Durable: Evaluators noted the high quality of **Knit Pak +**, noting that the braided cord was very sturdy and did not come apart while packing.

Versatile: Available in six color-coded sizes and impregnated with aluminum chloride to assist in achieving hemostasis.

Evaluator Comments:

- "I love using the double- and triple-zero for two-cord technique."
- "Easy to pack and place without unwinding or dislodging. This cord stays wound unlike others which fray and separate."



CATEGORY: INDIRECT RESTORATIVES

BITE REGISTRATION

Futar® Fast (Kettenbach)

Award-Winning Features:

Accuracy: Due to its quick set and working time, **Futar Fast** allows for superior bite registration every time.

Excellent Viscosity: Evaluators reported the material stacked well and did not run off the tooth.

Evaluator Comments:

- "Does not lock into undercuts; stays where it is placed."
- "Excellent detail produced so quickly! My lab loves this product as well."



CATEGORY: INDIRECT RESTORATIVES

VPS IMPRESSION MATERIAL

3M™ Imprint™ 4 VPS Impression Material

(3M Oral Care)

Award-Winning Features:

Superior Detail: **Imprint 4** provides crisp and color contrasted impressions. Even in subgingival areas where impressions can be difficult, the hydrophilic nature of this impression material delivers a quality impression each and every time.

Unique Setting Feature: The self-warming feature of this impression material once placed in the mouth is an advantage and offers more comfort for the patient than traditional materials.

Evaluator comments:

- "Clean, clear margins, really great in difficult to impress cases where tissue management is challenging. I never had a retake."
- "Patients loved the taste and the super quick set."





CATEGORY: INDIRECT RESTORATIVES

PROVISIONAL: UNIVERSAL

Visalys® Temp (Kettenbach)

Award-Winning Features:**Superior Polish and Esthetics:**

Evaluators reported an excellent, lifelike shade. The material polished to a beautiful luster.

Ease of Handling: *Visalys Temp* is stiff but not brittle, had a very thin oxygen inhibited layer which was easily removed with alcohol, and did not lock into undercuts like competitor materials. Working time was excellent and set time very fast. The final result was very strong.

Evaluator Comments:

- "Great handling – easy to finish and polish."
- "Good shade selection. This is my new favorite material!"



CATEGORY: INDIRECT RESTORATIVES

CEMENT: RMGI

GC FujiCEM® Evolve (GC America, Inc.)

Award-Winning Features:**Outstanding Bond to Zirconia:**

As independently tested in DENTAL ADVISOR Laboratories, *GC FujiCEM Evolve* achieved the highest bond to zirconia than any other RMGI Cement tested.

Easy Clean-up: Using the tack cure feature made clean up of excess cement effortless.

Evaluator Comments:

- "So easy to mix and place, and it has a self-cure function we really like."
- "Ease of use, smooth mix, amazing clean-up after tack-cure and radiopaque. My assistants love this cement."



CATEGORY: INDIRECT RESTORATIVES

CEMENT: SELF ADHESIVE RESIN

PANAVIA™ SA Cement (Kuraray America, Inc.)

Award-Winning Features:

Excellent Clean-up: Excess cement easily peels away from the margin, and evaluators noted even interproximal clean-up was simple.

Ease of Handling: Evaluators reported both working time and setting time to be good, and dispensing from the syringe offered a consistent and smooth mix with no bubbles.

Evaluator Comments:

- "It doesn't set up too quickly when spot curing it. You hit it for a second or two, and the excess will peel right away from the margin."
- "We had no retention or sensitivity issues. It's quick and simple to use and I like that you can use it in a moist environment."



CATEGORY: INDIRECT RESTORATIVES

CEMENT: TEMPORARY NON-EUGENOL

Provicol QM Plus (VOCO)

Award-Winning Features:**Excellent retention:**

No debonds were reported, nor did patients experience sensitivity.

Ease of clean-up: Due to the initial gel set, removal of excess was quickly achieved.

Evaluator Comments:

- "*Provicol QM Plus* has a great consistency, flows well, and excess is so easy to remove."
- "Excess cement remained inside the temporary; this shortened clean up time during final cementation."



CATEGORY: INDIRECT RESTORATIVES

CEMENT: ADHESIVE

G-CEM LinkForce® (GC America, Inc.)

Award-Winning Features:

Complete System: All components are available in the kit which account for cementation and bonding of all substrates without the need for purchasing separate products.

Multi-Purpose: *GCEM LinkForce* can be used for the cementation of all restorative materials, including ceramics and hybrid ceramics, lithium disilicate, zirconia, precious metal and porcelain-fused-to-metal, and glass fiber posts.

Evaluator Comments:

- "I liked the long working time and the ease of clean-up."
- "I like the dual-cured option, and that *G-Premio Bond* can bond to any material in any mode."



CATEGORY: INDIRECT RESTORATIVES

CEMENT: ESTHETIC RESIN

Variolink Esthetic LC (Ivoclar)

**Award-Winning Features:**

Shade Match: Evaluators appreciated the stable color of the cement after curing and over time. Try-in pastes were helpful and true to final color.

Ease of Clean-up: Evaluators noted the ease of clean-up of *Variolink Esthetic*, an essential property when working with esthetic restorations.

Evaluator Comments:

- "I was able to get precise shade matching with *Variolink Esthetic*. The shades remain stable over time as well."
- "Easy clean-up, great viscosity. I love the new high viscosity for thin restorations."



CATEGORY: INDIRECT RESTORATIVES
CEMENT: UNIVERSAL RESIN CEMENT
3M™ RelyX™ Universal Resin Cement (3M Oral Care)

Award-Winning Features:

Reduced Procedure Time and Waste: As measured by DENTAL ADVISOR Laboratories, **3M RelyX Universal Resin Cement** has a unique tip which reduces waste and was measured to utilize 67% of the cement in the syringe, as opposed to competitors which only used 32% of the cement in the syringe. In addition, the small syringe design allows for quick dispensing directly into the restoration.

Superior Bond Strength: Dentin and zirconia bond strengths were the highest ever tested in DENTAL ADVISOR Laboratories, and outperformed competitors in both self-adhesive and adhesive mode.

Evaluators Comments:

- "This new syringe is great! It dispenses quickly without bubbles every time."
- "One cement for everything with great bond strength, that saves us time, and reduces waste? Count me in!"



CATEGORY: INDIRECT RESTORATIVES
ZIRCONIA PRIMER
Z-Prime™ Plus (BISCO)

Award-Winning Features:

Proven Bond Strength:

As tested in DENTAL ADVISOR laboratories, an increased bond to zirconia was achieved when using **Z-Prime Plus**.

Ready to Use: Evaluators reported that not having to refrigerate was a clinical advantage, and the material dispensed evenly and easily from the bottle.

Evaluator Comments:

- "**Z-Prime Plus** increases bond strength, and is especially helpful for less retentive preps."
- "I love that it is compatible with light and dual cured cements."



CATEGORY: POLISHERS
CERAMIC POLISHERS
ASAP Indirect + (Clinician's Choice)

Award-Winning Features:

Superior Polish and Luster:

Evaluators appreciated the efficiency of the polishers, which left multiple surfaces smooth and gloss-like.

Versatile: Many shapes are available for pre-polish and final polish, and are offered for intra-oral and extra-oral options.

Evaluator Comments:

- "I was able to retain surface anatomy yet achieve a polish that was life-like and natural looking."
- "I love that they are available for intra-oral and extra-oral use in all shapes and sizes. Virtually anywhere and anytime I need to polish."



CATEGORY: INDIRECT RESTORATIVES
UNIVERSAL CERAMIC PRIMER
Monobond™ Plus (Ivoclar)

Award-Winning Features:

Truly Universal: Can be used on any substrate, including metal and all ceramics.

Improved Bond to Substrates: DENTAL ADVISOR Laboratories confirmed high bond strengths in several independent studies, achieving bonds to IPS e.max CAD of 50 MPa, 40.4 MPa to Lava Esthetic Zirconia, and Stainless Steel 60 MPa.

Evaluator Comments:

- "The application is always consistent and couldn't be easier."
- "I like that it can be used with all indirect restorations. Ceramics, metals, composites... I don't need another primer!"



CATEGORY: INDIRECT RESTORATIVES
RESTORATION CLEANER
ZirClean™ (BISCO)

Award-Winning Features:

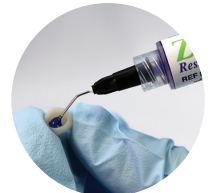
Enhances Surface, Preparing for Primer:

ZirClean prepares the surface for primer to work more effectively.

Ease of Use: Delivered in a syringe and gel form, **ZirClean** is easy to directly place into the restoration and requires no scrubbing.

Evaluator Comments:

- "Great viscosity, I don't worry about it running out of the restoration like liquid cleaners."
- "I find this very helpful for all larger restorations; it is easy to dispense and stays where I put it until rinsing is necessary."



CATEGORY: MISCELLANEOUS
BEST VALUE PRODUCT
MIXPAC™ T-Mixer (Sulzer MIXPAC)

Award-Winning Features:

Savings of Measured Waste: Testing by DENTAL ADVISOR confirmed that 25%-40% less waste occurred by using **MIXPAC T-Mixer** compared to longer, standard mixing tips.

No Material Performance Degradation:

MIXPAC T-Mixer tips did not adversely affect the critical mechanical properties of elastic recovery and strain-in-compression for impression materials or flexural strength and modulus for the restorative materials tested.

Evaluator Comments:

- "Homogeneous mix and less waste."
- "I found the **MIXPAC T-Mixer** tips to be an excellent product, providing a savings to the office without changing procedures."





CATEGORY: ENDODONTICS

ENDODONTIC IRRIGANT

Irritrol® (Essential Dental Systems)

Award-Winning Features:

Single-Step: Two solutions, EDTA and Chlorhexidine, are contained in one solution, saving time.

Color Contrast: The bright green color was well liked by evaluators, as it offers easy identification during irrigation and when drying canals.

Evaluator comments:

- "This product is so easy to integrate, and it seemed to clear the smear layer really well."
- "My assistant loves this product. It saves her time not having to prepare two solutions, and the green color makes it very easy to identify where to suction and when canals are fully dried."



CATEGORY: ENDODONTICS

MTA PRODUCT

NeoPUTTY® (Avalon Biomed)

Award-Winning Features:**Pre-Mixed and Syringeable:**

NeoPUTTY can be quickly placed and has over 10 clinical indications.

Immediate Restoration and

Non-Resin Based: In comparison with other MTA materials where a wait is necessary, NeoPUTTY allows for immediate restoration. A non-resin based formulation assures a strong seal with the potential for maximum bioactivity.

Evaluator Comments:

- "Much easier to place than my current MTA material and it did not wash out after placing."
- "Provided a well-sealed restoration immediately after pulp capping."



CATEGORY: ENDODONTICS

ENDODONTIC SEALER

NeoSEALER Flo® (Avalon Biomed)

Award-Winning Features:**Unique Tip Designs for Direct Placement:**

A pre-mixed sealer with the unique **Flex Flo Tip™** not only minimizes waste, but the bottom half of the tip is very flexible. This allows for maximum canal penetration, even in curvy canals, if you are placing using the direct injection technique. Two additional tip types are available with the refill kit.

Antimicrobial: NeoSEALER Flo has a high initial pH, which has an anti-bacterial effect, minimizing any chance of reinfection.

Evaluator Comments:

- "The delivery tip is excellent and allows for precise placement in the canal."
- "This material was great for sealing accessory canals and irregular shaped canals."



CATEGORY: ENDODONTICS

DENTAL DAM: NON-LATEX

Isodam® (4D Rubber Company)

Award-Winning Features:

Stretch and Tear Resistant: In a custom test designed by DENTAL ADVISOR, Isodam performed exceptionally well in comparison to other dental dams. The test measured not only tear strength, but the stretch of a punched hole in the dam, emulating clinical experience of isolation over a tooth.

Durable and flexible: Evaluators were pleased with the high quality of Isodam, noting that it stretched without tearing.

Evaluator comments:

- "This dam is extremely flexible and does not tear, unlike many dams I have used."
- "This handles well, as if it is latex, but it is latex-free. It adapted perfectly around the teeth."

DENTAL ADVISOR
Research Report #143

CATEGORY: ENDODONTICS

DENTAL DAM: LATEX

Powder-Free Black Latex Dental Dam (Sanctuary Health)

Award-Winning Features:

Color Contrast: Evaluators noted that the black color allowed for a stark contrast and differentiation. Those skilled in photography preferred this dam for high quality clinical photographs.

Durable: These dams reportedly resisted tearing and held position well, providing excellent and reliable isolation.

Evaluator Comments:

- "Excellent fit. Best dental dam ever!"
- "Great color contrast. It made it easier to see into the root canals."



CATEGORY: ORAL SURGERY

ORAL SURGERY INSTRUMENT

FRINGS® (TBS Dental)

Award-Winning Features:**Unique Spring-Load Design: FRINGS**

offer a spring mechanism that allows the forceps to auto-retract, removing the need to use fingers to open the forceps.

Color-and Numerically Coded:

The titanium forceps have blue handles to easily identify FRINGS, and are laser etched with tooth numbers to easily identify for procedure setups.

Evaluator Comments:

- "The spring loaded handles are brilliant. I liked the ease of holding them without having to use two of my fingers to open the forceps."
- "I really liked the serrated tips and the hinges. The beaks gripped teeth well."





CATEGORY: SMALL EQUIPMENT

AMALGAM SEPARATOR

NXT Hg5® Amalgam Separator (Solmetex)

Award-Winning Features:

Ease of Maintenance: The clear container makes it easy to read the level of amalgam. The full container can be removed cleanly, and the new one is easy to attach.

Fully Compliant: ISO Certified for 99% efficiency, **NXT Hg5** complies with the EPA's requirement for amalgam containment. The purchase of each new canister includes delivery to a certified recycler, recycling and an online certificate for compliance verification.

Evaluator Comments:

- "I was concerned about changing the filter but was pleasantly surprised at the ease and cleanliness!"
- "Great product; Not only are we cleaning up our environment, but we improved the suction quality in our office as well!"



CATEGORY: SMALL EQUIPMENT

WHITENING: IN-OFFICE LIGHT ASSISTED

BEYOND® Polus® Advanced Ultra Whitening Accelerator (BEYOND® International, Inc.)

Award-Winning Features:

Minimal Sensitivity: A specialized **LightBridge™** combination Halogen and LED light with filtration allows for heat reduction and UV blocking, while an ultrasound function cavitates whitening gel, minimizing possible side effects of sensitivity.

Fully Automated: The unit is fully automated and includes voice activation, a motorized arm, full color touch screen and 360° range of motion.

Evaluator Comments:

- "Our office has used many whitening lights. **BEYOND Polus Advanced Ultra** is our favorite. This system works; it impresses patients and they are always pleased with the final result."
- "Having options of different modes for different patient needs is such a great feature. It truly customizes the experience."



CATEGORY: SMALL EQUIPMENT

LED CURING LIGHT

Bluephase® PowerCure (Ivoclar)

Award-Winning Features:

Unique Technology: Polyvision provides a "lane keeping" function which detects when the light beam drifts from the intended area, alerting the operator through vibration to reposition the light. The Polywave LED ensures that all light-cured materials can be successfully and thoroughly cured.

Quick and Efficient Cure: As validated in DENTAL ADVISOR Biomaterials Laboratory, **Bluephase PowerCure** provided equivalent bond strength in 3 seconds when compared to light curing for 10 seconds with the **Bluephase G2** for the **Tetric® PowerFill** and **Tetric® PowerFlow** composites and **Adhese Universal**.

Evaluator Comments:

- "Great curing light. Good weight and balance, and the tip swivels to where I need it."
- "The tack cure, 'pre-cure' mode was spot on, making for a very consistent cleanup."



CATEGORY: MISCELLANEOUS

TOP ONLINE EDUCATION

Hands-On LIVE (Clinician's Choice)

Award-Winning Features:

Live Interaction: This course is held remotely but is a live course where presenters and attendees can discuss concepts and techniques.

Materials Kit: All materials utilized in the hands-on course, including a model, are shipped prior to the course so that clinicians can set up learning right in their own operatory.

Evaluator Comments:

- "I love being able to have all of the products sent to me and being able to work alongside a Key Opinion Leader (KOL). I get to try new products and get tips from dentists that are considered some of the best in the country."
- "I like how there is allocated time to do the procedure without taking away from the participants ability to watch and view what the presenter is doing."



CATEGORY: MISCELLANEOUS

WHITENING: IN-OFFICE

Pola Rapid (SDI North America, Inc.)

Award-Winning Features:

Fast Application Time: With results in just 24 minutes, **Pola Rapid** truly lives up to its name, providing quick, in-office results without the need for a separate light system.

Excellent Delivery and Handling: The blue color of **Pola Rapid** provides excellent visibility and the brush tip applicator simplifies placement.

Evaluator Comments:

- "Good results, easy to use, and no light needed."
- "The quick chair time is amazing. I had patients, who had previously done other in-office whitening procedures, comment this was much faster and yielded better results."



MANUFACTURER TESTIMONIAL

Deborah S. Laird, R.Ph. of Pierrel Pharma at the Chicago Midwinter Meeting displaying the DENTAL ADVISOR Preferred Product Award banner for **GOCCLLES**.

"The DENTAL ADVISOR rating lends credibility to the studies that we submitted for FDA approval. Having that clinical evaluation is very meaningful."



CATEGORY: HYGIENE

PROPHY PASTE

Enamel Pro® (Premier® Dental Products Company)

Award-Winning Features:

Combined Effectiveness: **Enamel Pro** contains both fluoride and ACP (amorphous calcium phosphate) which has been proven to aid in remineralization.

Smooth Polish: ACP contained in the paste assists in creating a smooth feeling, as the reaction of calcium and phosphate create a precipitate at the tooth surface, filling in scratches caused by polishing.

Evaluator Comments:

- "This is the only prophy paste we have found that actually removes extrinsic stain. It doesn't splatter and has a great consistency."
- "Teeth are so smooth after polishing! Even the patients note that their mouth feels clean and teeth feel smooth."



CATEGORY: HYGIENE

PEDIATRIC PRODUCT

MI Paste ONE Kids (GC America, Inc.)

Award-Winning Features:

Dual Function: Contains fluoride and **RECALDENT™**, a bio-available calcium, phosphate and fluoride derivative to remineralize.

pH Neutral: pH buffering to help neutralize pH levels in the mouth, which can assist in caries prevention.

Evaluator Comments:

- "Kids love these flavors!"
- "Does not leave an unpleasant residue on teeth, even though it is not designed to be rinsed."



MANUFACTURER TESTIMONIAL

Haseeb Sajid, CEO for TBS Dental, poses proudly with DENTAL ADVISOR 2020 Top Oral Surgery Instrument Award banner for **FRINGS®**

"DENTAL ADVISOR is one of the most credible and respected institutions in the industry. We submitted a product to them two years ago and the professionalism and service that they provided was phenomenal. We plan on working with them again in the future."



CATEGORY: HYGIENE

DESENSITIZER

TEETHMATE™ DESENSITIZER
(Kuraray America, Inc.)

Award-Winning Features:

Hydroxyapatite Formation:

TEETHMATE seals cracks in the enamel and provides a hydroxyapatite slurry upon mixing, which makes easier application in harder to reach areas.

Long-Lasting Effects: In a study conducted by DENTAL ADVISOR, 85% of patients continued to report mild to no sensitivity after 6 months in teeth treated with **TEETHMATE DESENSITIZER**.

Evaluator Comments:

- "**TEETHMATE DESENSITIZER** is easy to apply and seems to provide consistent relief."
- "My patients were pleased with the overall result"



CATEGORY: HYGIENE

PREVENTATIVE PRODUCT

MI Paste Plus® (GC America, Inc.)

Award-Winning Features:

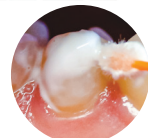
Dual-Action: Containing both Fluoride and **RECALDENT™**,

MI Paste Plus provides added protection against sensitivity, caries formation and can remineralize enamel.

Patient Satisfaction: Patients enjoy the pleasant taste and smooth consistency of **MI Paste Plus**; evaluators commented that patients were very compliant with regular use and noted a high level of decreased sensitivity.

Evaluator Comments:

- "**MI Paste Plus** is the only product we recommend to patients to reduce sensitivity. It is incredibly effective."
- "This product is so easy to apply chairside; simply smooth onto teeth and provide instructions for patients to use at home, no trays necessary."



Clinician:
Dr. Ona Erdt



CATEGORY: HYGIENE

FLUORIDE VARNISH

Profluorid® (VOCO)

Award-Winning Features:

Smooth and Clear Application:

Evaluators reported **Profluorid®** to have a smooth consistency with a clear finish.

Adheres Well:

Evaluators found **Profluorid** to adhere well in a moist environment and spread on the teeth well.

Evaluator Comments:

- "This varnish is my go-to because of it's smooth application and clear appearance."
- "Patient satisfaction is high due to the flavor and reduced sensitivity."





CATEGORY: DIAGNOSTIC

LED LOUPE LIGHT

Featherlight™ LED Headlight System
(Ultralight Optics, Inc.)



Clinician:

Dr. Julius E. Bunek



Award-Winning Features:

Long-Lasting Battery: Evaluators reported battery life is excellent and that it lasted an entire day.

Lightweight: Weighing only 4 grams, the light is very comfortable and does not add weight like other competitive lights.

Evaluator Comments:

- "Lightweight – I do not feel like any additional weight is on my glasses."
- "The light is bright and focused and the battery charge lasts all day."



CATEGORY: DIAGNOSTIC

CONE BEAM

CS 9600 (Carestream Dental)



Award-Winning Features:

Intuitive Software: CS 9600's Smart Pad effectively guides the user through all selections necessary to achieve a quality scan each and every time.

Crisp Images with Lower Exposure: Multifunction imaging enables clear and quality images with significantly less radiation than traditional 2D panoramic scans.

Evaluator Comments:

- "Everyone in our office can easily take a high quality scan with little to no training. This software is so easy to navigate."
- "The versatility of the CS 9600 is amazing. We can evaluate virtually any condition and the AI powered positioning saves each patient profile as we follow the case to completion."



CATEGORY: INFECTION CONTROL

WATERLINE TEST

Quick Pass (ProEdge Dental Products)



Award-Winning Features:

Easy to Use: Simple 3-step procedure utilizing a vial and a quick growing medium plate to measure bacteria.

Convenient, No Shipping Necessary:

Performed in-office with results in 48 to 72 hours.

Evaluator Comments:

- "I like that this is quick and can be done in-office at regular intervals. If there are any questionable results, I can seek out more information and support."
- "A quick and easy way to verify that our treatment is working."



CATEGORY: INFECTION CONTROL

STERILIZATION POUCH

Sure-Check™ Self-Seal Sterilization Pouches
(HuFriedyGroup)



Award-Winning Features:

Triple-Sealed: The bags are triple sealed on the edges to prevent instruments from penetrating and tearing the bag. Evaluators noted the bags to be much stronger than other brands utilized.

Multi-parameter internal/external process indicators: Indicators change color when all three criteria for sterilization have been met – time, temperature and sterility contact.*

*Steam or ETO

Evaluator Comments:

- "Internal monitor is a must for checking instrument sterility."
- "Well made product. Most durable pouch I've used."



CATEGORY: INFECTION CONTROL

HAND SOAP

PURELL Healthcare CRT HEALTHY SOAP
High Performance Foam (GOJO Industries, Inc.)



Award-Winning Features:

Gently Cleanses Skin: Cleans hands without irritating or over drying the skin.

Moisturizing: Leaves hands feeling soft and smooth.

Evaluator Comments:

- "Rinsed off quickly and made my hands feel soft."
- "It left my skin feeling great and I appreciated that there was little scent."



CATEGORY: INFECTION CONTROL

HAND SANITIZER

PURELL Advanced Hand Sanitizer ULTRA NOURISHING
Luxurious Foam (GOJO Industries, Inc.)



Award-Winning Features:

Moisturizing: Does not over dry the skin. Hands feel soft after each use.

Quick Dry Time: No sticky residue or unpleasant odor left behind.

Evaluator Comments:

- "Usually, my hands get overdried and red after using sanitizers but this product was great."
- "It evaporates quickly and really moisturizes. My hands felt so soft!"



CATEGORY: INFECTION CONTROL

FACE SHIELD

Ultralight Loupe Face Shield
(Ultralight Optics, Inc.)



Clinician:
Dr. Julius E. Bunek



Award-Winning Features:

Fully Adjustable and durable:

Ultralight Loupe Shield features a flip up design with interchangeable front and top shields.

Fits any Type of Loupe: The shield is designed to accommodate long and short loupe types, and can be mounted outside the shield as well.

Evaluator Comments:

- "Far superior to any other face shields we have tried."
- "Very easy to adjust and maintains that desired position."



CATEGORY: INFECTION CONTROL

NITROUS MASK

Accutron™ ClearView™ Nasal Mask
(HuFriedyGroup)



Award-Winning Features:

Excellent Visibility:

Evaluators appreciated the ability to clearly see whether the patient was breathing properly and nitrous was being administered.

Great Fit: The nosepiece fits securely on the patient's face.

Evaluator Comments:

- "Patients report they fit comfortably and smell nice."
- "Very helpful to see the nasal hood fog up, confirming the patient is breathing through their nose."



CATEGORY: INFECTION CONTROL

TOP MASK

Crosstex™ Surgical Face Masks with Secure Fit™ Technology (HuFriedyGroup)



Award-Winning Features:

Superior Fit: Due to the patented nosepiece and chin strip, these masks fit and conform to the face better than other brands which do not possess a chin strip.

Highly Comfortable: Evaluators reported the masks to be very comfortable, especially around the ears and nose.

Evaluator Comments:

- "I like the top and bottom strips for better adaptation/comfort."
- "My glasses don't fog up! They fit well, are secure, comfortable and breathable."



CATEGORY: INFECTION CONTROL

DISPOSABLE

Palmero™ Dynamic Disposables™ Snapeez™ Face Shields
(HuFriedyGroup)



Award-Winning Features:

Protective, Secure Fit: Evaluators reported that **Snapeez** felt secure whether worn with glasses, loupes or without, and securely fit to the face and ears.

Lightweight Yet Durable: The reusable frames are extremely lightweight yet sturdy, and the locking notches for the shield and pre-folded sides provide great protection from spatter.

Evaluator Comments:

- "Fit well over my loupes."
- "Very light-weight. Did not even feel like I was wearing a shield"



CATEGORY: INFECTION CONTROL

STERILIZATION MONITORING SYSTEM

Crosstex™ Sterility Assurance System
(HuFriedyGroup)



Award-Winning Features:

Triple Check System: Using a biological indicator provides in-office quick results, using a Type 5 Integrator provides full sterilization load verification, and **SURE-CHECK** provides both internal and external indicators for every bag.

No Waiting: There is no need to mail spore tests and wait for results.

Evaluator Comments:

- "I like having three separate options to verify results."
- "You can see results right away, as opposed to the monitoring service which takes days."



CATEGORY: INFECTION CONTROL

WATERLINE TREATMENT PRODUCT

DentaPure™ Independent Water Bottle Cartridge
(HuFriedyGroup)



Award-Winning Features:

Long-Term Solution:

When tested by DENTAL ADVISOR, **DentaPure™** successfully reduced microbial contamination and maintained effective microbiological control in dental unit waterlines for a one-year test interval.

Easy to Use: Once installed minimal maintenance required for one year or 240L of water.

Evaluator Comments:

- "Very low maintenance. Only needs to be replaced annually."
- "Super easy to use. I will never go back to tablets!"



CATEGORY: PATIENT PRODUCTS

ORAL HEALING PRODUCT

StellaLife® VEGA® Oral Care Recovery Kit (StellaLife®)

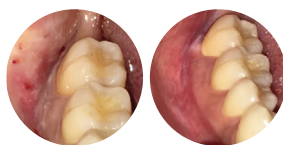
Award-Winning Features:

Homeopathic Healing: Natural ingredients provide accelerated healing, improved recovery and comfort for patients without the need for narcotics.

Complete Kit: A rinse, spray and gel are all contained in the kit for continuous comfort all day. Patients enjoyed having all options available to them.

Evaluator Comments:

- "We successfully used it to treat erosive lichen planus for multiple patients."
- "Great for patients after bone grafting and implant procedures."



Pre-op

1 week post-op



CATEGORY: PATIENT PRODUCTS

TAKE-HOME WHITENING

Wit Essential (FGM)

Award-Winning Features:

High Patient Satisfaction: Patients were pleased with the overall results of whitening, the lack of sensitivity, and the attractive kit.

Superior Viscosity: Unlike other products which can run out of the tray, **Wit Essential** flows well from syringes using a well-designed tip and does not overflow once the tray is placed.

**Evaluator Comments:**

- "Excellent results. Higher than usual patient satisfaction."
- "Plenty of material, great consistency of gel, and it stayed where placed."

Absorbent Cheek Pad**NEODRYS**

Microcopy Dental

Air/Water Syringe Tip**Seal-Tight**

KaVoKerr

Alginate**Cream Alginate**

Cavex Holland BV

Anesthetic**Buffering System****Anutra Anesthetic****Delivery System**

Anutra Medical Inc.

Apex Locator**Coltene CanalPro**

Coltene

Athletic Mouthguard**SISU Next Gen**

Ackervall Technologies

Bur: Specialty**Alpen Speedster**

Coltene

Carbide Bur: Multi-Use**Alpen Carbide**

Coltene

Carbide Bur: Single-Use**SINGLES (Carbides)**

Mesinger USA

Composite Polisher:**Multi-Step****Twist Polishing Kit**

Meisinger USA

Composite Polisher:**One-Step****Dimanto, VOCO****Composite:****Low-Filled Flowable****NovaPro Flow**

Nanova Biomaterials, Inc.

Denture Adhesive**OlivaFix Denture Adhesive**

Bonyf

Denture Reline Material**Sofreliner Tough S**

Tokuyama Dental America

Diamond: Single-Use**NeoDiamond**

Microcopy

Diode Laser**Picasso Lite**

AMD

Disposable**Snappeze**

Palmero

Disposable Prophyl Angle**Splatter Guard**

Young Dental

Endodontic Clamp Kit**Sanctuary Clamp Kit**

Sanctuary Health

Endodontic**Obturation System****Elements Free IC**

KaVoKerr

Evacuation Cleaner**AQ Solution**

Anterior Quest

Fiber Post**Parapost Taper Lux**

Coltene

Glove: Chloroprene**Blossom**

Mexpo International

Glove:Fitted**Qualitouch**

Smart Practice

Glove:Nitrile**Ultraform**

Ansell

Hand Care**Fite Bac, Fite Bac****Handpiece****Maintenance System****Quattrocare Plus**

KaVoKerr

Handpiece: Air-Driven**Tornado LK**

Bien Air USA

Handpiece: Low Speed,**Air-Driven****SMARTmatic S20 HP**

KaVo Kerr

Hands Free HVE**Mr Thirsty**

Zirc

Hemostatic Dressing**SafeGauze Hemostat**

MEDICOM

HVE Tip**Safe Vac**

Safe Vac

Hygiene Handpiece**Infinity**

Young

Intraoral Camera**IRIS Intraoral Camera**

Digital Doc

Matrix: Anterior**Bioclear Anterior Matrix Kit**

Bioclear

Needle**Septoject Evolution**

Septodont, Inc.

Oral Cancer Screening**OralID**

Forward Science

Sterilizer**Midmark M11**

Midmark

Surface Disinfectant**OPTIM1**

SciCan

Temporary**Therapeutic Device****SOVA Nightguard**

Ackervall Technologies

Wedge**3D Fusion Adaptive Wedge**

Garrison Dental Solutions

INNOVATIVE COMPANY OF THE YEAR

Ivoclar was chosen as innovative company of the year due to their continued commitment to truly understanding the needs of the dental professional and creating products centered upon end-user experience. Unique and inventive research is centered around products and equipment being optimized when used in unison. Integrated solutions that save time and effort are thoroughly researched to ensure that the concepts meet performance, and add value to the procedure. A cornerstone of **Ivoclar's** success is in its education to Dental Professionals. **Ivoclar** has been a long-time leader in delivering quality products with a strong backbone of quantitative data to support clinical performance over time.

*We rely on **Ivoclar Vivadent** to continue to lead the industry with innovations.*

CONGRATULATIONS!

ivoclar

Bluephase® PowerCure

Innovative Features:

- **Bluephase PowerCure** is the first curing light to offer a feature which alerts a user if the beam is not directed properly. The vibration of the handpiece and automatic ten percent correction in curing time is similar to a lane keeping system in a vehicle, allowing the user to be cognizant of potential curing issues and to assure a thorough cure.

- Polywave technology in the curing light covers a wide emission spectrum using different LED lights and is optimized for use with Ivoclar composites, which contain Ivocerin® and Aessencio® technologies designed to positively impact translucency via polymerization boosting. This means a more esthetic result can be achieved in less time using Ivoclar's **3s PowerCure** program.



Independent Laboratory Findings:

Bluephase PowerCure curing light was tested to determine if similar bond strengths could be achieved using **Tetric PowerFill** and **Tetric PowerFlow** with a 3-second flash cure versus the **Bluephase G2** in a 10-second cure.

DENTAL ADVISOR confirmed that light curing with the **Bluephase PowerCure** in a 3-second flash cure provided equivalent bond strength to light curing for 10 seconds with the **Bluephase G2** for the **Tetric PowerFill** and **Tetric PowerFlow** composites and **Adhese Universal**. This reduces procedure time for the clinician.

Variolink Esthetic LC



- Contains Ivoclar's patented technology, Ivocerin, also present in their composites, which ensures excellent shade stabilization clinically over time.
- Now offered in a high viscosity formulation, this allows for precise placement of thin restorations such as veneers, without concern of displacement during seating.

Monobond™ Plus



A truly universal primer that can be used on all substrates, including composites.

- No refrigeration necessary
- Acts quickly within 60 seconds.





HANDPIECE: AIR-DRIVEN

Ti-Max Z900L (NSK America)



Why This Product Was Chosen:

Excellent Visibility: Due to its narrow neck design and 94° angled head, this powerful and smooth cutting handpiece is also easy to see around, making for an excellent field of vision.

Evaluator Comments:

- "Great all-around handpiece."
- "Very smooth and concentric. Even water spray."



COMPOSITE: HIGHLY-FILLED FLOWABLE

G-aenial™ Universal Injectable

(GC America, Inc.)

Why This Product Was Chosen:

Superior Handling and Adaptability:

Evaluators noted that **G-aenial Universal Injectable** was free of bubbles, flowed well, and stayed where placed. Esthetics were also excellent and life-like.



Evaluator Comments:

- "This material adapts beautifully, and it retains cusp form without slumping."
- "You can use it as a base and the depth of cure is excellent."



COMPOSITE: BULK FILL RESTORATIVE

Aura Bulk Fill (SDI North America, Inc.)

Why This Product Was Chosen:

Excellent Depth of Cure:

As measured in DENTAL ADVISOR Laboratory, **Aura Bulk Fill** achieved a Depth of cure of 7.3 mm in 20 seconds, and 8.9 mm in 40 seconds.



Evaluator Comments:

- "The universal shade is really just that. I did not expect the color to blend with most teeth, but it did!"
- "Viscosity and handling are excellent. It polished amazingly well!"



UNIVERSAL CERAMIC PRIMER

CLEARFIL™ Ceramic Primer Plus

(Kuraray America, Inc.)



Why This Product Was Chosen:

Wide Range of Use and Enhanced Bond:

Evaluators appreciated that **CLEARFIL Ceramic Primer Plus** could be utilized with all ceramic and composite substrates, as well as repairs. When used in conjunction with **CLEARFIL Esthetic Cement** and sandblasted zirconia, bond strength increased significantly as confirmed by DENTAL ADVISOR Biomaterials Laboratory.

Evaluator Comments:

- "Wets ceramics well and is quick to apply!"
- "Saves step of etching ceramic restorations, decreases placement time."



BONDING AGENT: UNIVERSAL

CLEARFIL™ Universal Bond Quick

(Kuraray America, Inc.)

Why This Product Was Chosen:

Time-Saving: No scrubbing is necessary after application and specialized amide monomers rapidly penetrate dentin and enamel. In addition, it is more hydrophilic than HEMA and absorbs less fluid.



Evaluator Comments:

- "Perfect viscosity. Ease of use and speed were great; my new 'go-to' bonding agent."
- "Loved the fact that it is compatible with dual/self-cured resins and also love that it can be used in self-cured mode with **CLEARFIL DC Activator**. It's applicable for all bonding procedures."



COMPOSITE: UNIVERSAL

Luna (SDI North America, Inc.)

Why This Product Was Chosen:

Outstanding Handling and Esthetics:

Evaluators commented on the smooth and creamy consistency of **Luna**, and the excellent shade match and esthetics.



Evaluator Comments:

- "Fantastic handling and great esthetics. Finishes and polishes easily."
- "I liked the consistency when expressed from the capsule. It was smooth and creamy."



SOFT TISSUE MANAGEMENT PASTE

3M™ Astringent Retraction Paste
(3M Oral Care)

Why This Product Was Chosen:

Unique Delivery System and Excellent Hemostasis:

Contained in a small capsule which fits into a traditional composite gun, **3M Astringent Retraction Paste** successfully achieves hemostasis. The tip is designed to directly place in the sulcus, and is shaped like a periodontal probe, making access simple.



Evaluator Comments:

- "I love the narrow diameter and shape of this tip. Fits perfectly in the sulcus and allows material to flow easily."
- "Excellent hemostasis. Left a really clear field for a successful impression."



COMPOSITE CORE MATERIAL

Luxa Core Z Dual
(DMG America LLC)

Why This Product Was Chosen:

Strong Yet Trimmable:

Excellent viscosity and set allowed evaluators to easily cut the material without fracture or chipping.



Evaluator Comments:

- "Dual-cured feature gives me more confidence in deep-layer polymerization."
- "Shade differentiation made prepping easier."



CEMENT: SELF-ADHESIVE

TheraCem® (BISCO)

Why This Product Was Chosen:

Time Savings: Everything about this product equals quick and easy. No need for additional steps as this material is self-etching, self-adhesive, dual-cure and has a 3-second tack-cure. Evaluators raved about the ease of use and cleanup with this cement.



Evaluator Comments:

- "Super thin viscosity and film thickness made it easy to dispense and spread along margins."
- "Excellent cement and super easy to use. I liked the calcium and fluoride release."



VPS IMPRESSION MATERIAL

Panasil® (Kettenbach)

Why This Product Was Chosen:

Exceptional Accuracy and Detail:

Evaluators reported a crisp, clear impression with a lack of voids and bubbles.



Evaluator Comments:

- "Easy to use, fast setting, good color contrast and good flow."
- "I like the viscosity of the light body—little to no voids, bubbles or drags."



CEMENT: UNIVERSAL RESIN

PANAVIA™ SA Cement Universal
(Kuraray America, Inc.)

Why This Product Was Chosen:

High Bond Strengths to all Substrates without a Separate Primer:

As tested in DENTAL ADVISOR Laboratories, **PANAVIA SA Universal** performed with excellent bond strength to dentin, enamel, lithium disilicate and Zirconia.



Evaluator Comments:

- "Great color match and I liked the universal ability to work with so many substrates."
- "Very user-friendly. Great that it can be stored at room temperature."



COMPOSITE: LOW-FILLED FLOWABLE

ES Flow® (Spident)

Why This Product Was Chosen:

Ideal Handling: Evaluators reported the medium viscosity flows well without running or slumping, and that the tip allowed for easy application and placement even in difficult areas.



Evaluator Comments:

- "It was easy to place and did not slump with instrumentation."
- "Easy to finish, very good polish and final appearance. Nice variety of shades that blended well with most teeth"



EVACUATION CLEANER

Monarch® CleanStream
(Air Techniques)

Why This Product Was Chosen:

Innovative Dispenser:

Hoses easily attach and a **Vortex™** seal is created to assist in cleaning the walls of the suction lines, hands-free.



Evaluator Comments:

- "We experienced improved suction after just one use."
- "The dispenser is the best part. Very easy to use and easy to teach new people with no guess work. The design is a win and the fresh smell is amazing!"



HYGIENE HANDPIECE

iStar® Cordless Hygiene Handpiece
(DENTAL EZ)

Why This Product Was Chosen:

Lightweight and Mobile: Evaluators enjoyed the portability and weight of **iStar**, as well as the ability to use with all proph angle brands.



Evaluator Comments:

- "Ergonomic and very easy to maneuver. I experienced less hand fatigue using this handpiece."
- "I love that I can use my preferred brand of proph angle."



ENDODONTIC OBTURATION SYSTEM

Dia-Duo Cordless Obturation System
(DiaDent® Group International, Inc.)

Why This Product Was Chosen:

Cordless Dual Function System:

Dia-Duo offers both a warm backfill gutta percha device, **Duo-Gun** and an obturator, **Duo-Pen**. Both reportedly held a charge well and accommodate both right and left hand users.



Evaluator Comments:

- "The tips are flexible enough to navigate around curves, yet stiff enough not to bend when advancing through those curves."
- "We were able to control flow. It was easy to fill the canal after the master cone."



WHITENING SYSTEM: IN-OFFICE LIGHT ASSISTED

Sinsational Smile (Sinsational Smile, Inc.)

Why This Product Was Chosen:

Zero Patient Prep: Effective and fast in-office whitening without the need to place gingival barriers or retractors makes the procedure more comfortable for the patient and easier for the team to implement.



Evaluator Comments:

- "Quickest, simplest in-office whitening system I have used."
- "Not one patient had any sensitivity!"



FLUORIDE VARNISH

FluoroDose®
(Centrix Dental)

Why This Product Was Chosen:

Excellent Flavors and High Patient Satisfaction: Evaluators reported that patients did not complain of an aftertaste, as they do with competitor products. Multiple flavors are available.



Evaluator Comments:

- "It has a very thin viscosity and flows well on the teeth. This provided better coverage than other products I've used."
- "The new design of the tray allowed me to use my fingers for retraction while applying."



ORAL CANCER SCREENING

Goggles® (Pierrel Pharma)

Why This Product Was Chosen:

Simple Innovation: No solutions are needed! Simply don **Goggles** and use a traditional curing light to illuminate the oral cavity. Any camera can capture areas of concern, and the Goggles app can assist clinicians in identifying conditions in need of further analysis.



Evaluator Comments:

- "Simple yet innovative concept. Lesions were clearly visualized and patients appreciated having this included in their oral exam."
- "The new **Goggles** app is a great way to identify areas of potential concern. As an added bonus I didn't have to purchase additional equipment and was able to use my existing curing light."



ONE-STEP COMPOSITE POLISHER

OneGloss (SHOFU Dental)

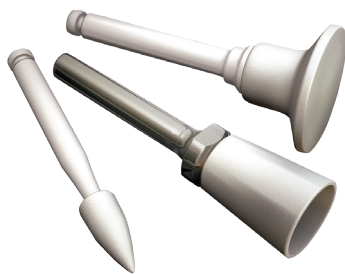
Why This Product Was Chosen:

Convenient and Dependable:

Individually packaged with multiple shapes.

Evaluator Comments:

- "The polishers are very durable and the shanks are strong and do not bend or break when pressure is exerted."
- "Great finish with minimal polishing debris."



GI RESTORATIVE

GC Fuji IX GP Extra (GC America, Inc.)

Why This Product Was Chosen:

Enhanced Performance:

Fuji IX GP Extra possesses high fluoride release, shorter working and setting times than conventional glass ionomers, and improved esthetics.



Evaluator Comments:

- "Excellent finishing and esthetics for a glass ionomer!"
- "I enjoyed the versatility of its use. I continually looked for different ways to incorporate this product into daily use."



WATERLINE TREATMENT PRODUCT

Monarch® Lines Cleaner

(Air Techniques)

Why This Product Was Chosen:

Consistent Results: Microbiological testing performed at DENTAL ADVISOR's Laboratory verified that this product successfully reduced and maintained bacterial levels, making a difference in only one week of treatment.

Evaluator Comments:

- "I love that it is easy to use! No mixing, dissolving or diluting is required."
- "Pleasant mint flavor. No patient complaints of 'funny' tasting water."



DENTAL DAM: LATEX

Nic Tone Latex (MDC Dental)

Why This Product Was Chosen:

Great Seal and Strength:

Evaluators reported a very tight seal without tearing.

Evaluator Comments:

- "Consistently seals around the teeth and provides great isolation."
- "This dam was strong and tear-resistant."



FIBER POST

Glassix Plus

(Nordin Dental)

Why This Product Was Chosen:

Efficient, Organized System:

Evaluators appreciated the kit contents, noting the posts were very radiopaque, had a good tapered and cross design for better core retention.

Evaluator Comments:

- "I really liked the prep drills. Nice shape and taper. Efficient cutting."
- "Can't see where or how these posts can be improved upon. Excellent product, highly recommended."



LED CURING LIGHT

Radii Xpert (SDI North America, Inc.)

Why This Product Was Chosen:

This Light Does it All: This smart curing light is loaded with features for optimal curing of all materials and additionally you can change out the head to a transillumination LED, a full arch bleach LED, and an orthodontic LED.

Evaluator Comments:

- "Long handle allows for easier gripping, and access in certain areas."
- "I liked the different attachments and all of the programmable options. It was very versatile."



**CEMENT: RMGI****RelyX™ Luting Plus**
(3M Oral Care)**Why This Product Was Chosen:**

Dependable: This fluoride releasing cement has a reliable bond and is easy to use and clean-up.

Evaluator Comments:

- "Best all-around post/crown cement. I need to have this in my 'tool box'."
- "Easy clean-up during the gel stage."

**COMPOSITE: SIMPLIFIED SHADE****SimpliShade** (Kerr)**Why This Product Was Chosen:****Intuitive Shade Matching:**

In addition to the great handling and esthetics of this composite, the simplified shade matching system makes shade taking as easy as deciding if the tooth is light, medium, or dark.

Evaluator Comments:

- "Excellent handling characteristics with a superior chameleon effect, even without blockers."
- "An outstanding composite that should be in every dentist's armamentarium of go-to restorative materials."

**TEMPORARY FILLING MATERIAL****Tempit-E** (Centrix Dental)**Why This Product Was Chosen:**

Ready to Use: Temporary filling materials with Eugenol traditionally require a very involved mixing technique. This material is pre-mixed, easy to place from a compule, and sets fast in five minutes.

Evaluator Comments:

- "We find this product so very helpful in treating emergencies. No mixing or light curing required!"
- "Adheres to tooth well, stays where put and is easy to sculpt."

**RMGI RESTORATIVE****Riva Light Cure HV** (SDI North America, Inc.)**Why This Product Was Chosen:****Quick and Easy Esthetics:**

Riva Light Cure HV is a glass ionomer that doesn't look or handle like a traditional glass ionomer. It has great handling properties, you can light cure it when you have it just how you want it, and it finishes and polishes beautifully.

**Evaluator Comments:**

- "Easy to place – material provides good adaptation."
- "Sets quickly and finishes nicely."

**MULTI-STEP COMPOSITE POLISHER****Super-Snap X-Treme**
(SHOFU Dental)**Why This Product Was Chosen:****Makes a Tried and True Product**

Even Better: When added to the **Super Snap** system, these polishers create a next-level gloss in rapid time.

**Evaluator Comments:**

- "Increased flexibility adapts to tooth contours."
- "Produced a glass-like finish to composite restorations."

**PEDIATRIC PRODUCT****TheraCal PT** (Bisco Inc.)**Why This Product Was Chosen:**

Immediate Restoration Placement: When working with wiggly pediatric patients, time is of the essence. This dual-cure pulpotomy material is injected directly into the pulp chamber and the final restoration can be placed over top after a quick 10-second light cure.

Evaluator Comments:

- "Superior product with good clinical results."
- "Easy application with bendable metal cannula. Good working time and hard set after light curing."



**CEMENT: ADHESIVE**

Visalys® CemCore (Kettenbach)

**Why This Product Was Chosen:****Consistent Protocol:**

This highly effective adhesive cement has a very simple and consistent protocol, so there is no guesswork with different substrates or situations.

Evaluator Comments:

- "The material has just enough consistency that it stays where it is placed rather than running into other areas of the prep."
- "Very convenient to have such a universal material that can be used as both a cement and buildup."

**NITROUS MASK**

Accutron™ Axess™ Low-Profile Nasal Mask (HuFriedyGroup)

**Why This Product Was Chosen:****Small, Low-Profile Mask:**

Evaluators reported that the mask gave excellent access to the oral cavity.

Evaluator Comments:

- "The mask was very comfortable for our patients. They loved it. It fit well and didn't pinch or leave any marks on the patient's face."
- "I'm able to do dentistry unimpeded using this system."

**HAND CARE**

Hu-Friedy™ Hand Essentials™ Skin Repair Cream (HuFriedyGroup)

**Why This Product Was Chosen:****Softens Hands and Moisturizes:**

Evaluators reported that **Hand Essentials** did not have a greasy feeling, that skin felt smooth and had less dryness and cracking after use.

Evaluator Comments:

- "My hands immediately felt soft."
- "Absorbs into the skin quickly with no greasy residue."

ADDITIONAL PREFERRED PRODUCT AWARD WINNERS**Absorbent Cheek Pad**
Shields Plus, Richmond Dental**Air/Water Syringe Tip**
Flash Tips, Dentsply Sirona**Alginate**
KromaFaze, KaVoKerr**Anesthetic Buffering System**
Onset, Orapharma**Apex Locator**
ApexID, KaVoKerr**Bonding Agent: Self-Etch**
Bond Force, Tokuyama Dental America**Bur: Multi-Use Carbide**
Great White #2, SS White Burs**Bur: Single Use Carbide**
NeoBurr, Microcopy**Bur: Specialty**
Occlusal Reduction Kit
Meisinger USA LLC**Cement: Temporary**
Non-Eugenol
Temp Bond NE, KaVoKerr**Composite:**
Highly-Filled Flowable
G-Aenial Universal Injectable
GC America, Inc.**Dental Dam: Non-Latex**
HEDY Polyisoprene
Non-Latex Dental Dam
HEDY Canada**Desensitizer**
Shield Force Plus®
Tokuyama Dental America, Inc.**Disposable**
SteriPocket, Richmond Dental**Disposable Prophylaxis Angle**
2 Pro, Premier Dental Products Co.**Endodontic Bioactive Cement**
MTA Repair HP, Angelus**GI Restorative**
Fuji IX GP Restorative, GC America, Inc.**Glove: Chloroprene**
Micro-Touch Denta-Glove Green
Neoprene, Ansell**Handpiece: Electric**
Electromatic, KaVoKerr**Hands Free HVE**
Dry Shield, Dry Shield**LED Headlight**
Firefly, DenMat**Mask**
VIBE, Pro 2 Solutions**Matrix: Anterior**
Uvener, Ultradent**Matrix: Sectional**
V3 Ring, Ultradent**Oral Surgery Instrument**
Plus Series Forceps, A.Titan**Preventive Product**
Remin Pro, VOCO**Retraction Cord**
Short Cut, KaVoKerr**Surface Disinfectant**
Caviwipes 2.0, KaVoKerr**Temporary**
Therapeutic Device
Nite Bite, Nite Bite**Whitening: Take-Home**
NuRadiance Classic, Nu Radiance**NEEDLE**

Transcendent Painless Injection Needle (Sulzer)

Why This Product Was Chosen:

Patient comfort: These needles feature a siliconized cannula and unique 3 edged lancet bevel for a smooth tissue penetration and increased patient comfort.

Evaluator Comments:

- "Needle is very sharp and slides smoothly into tissue."
- "Once screwed on, the threads of the hub lock onto the syringe better than other needles."



DA DENTAL ADVISORTM

Product insights you can trust.



A legacy of integrity

Over the past 38 years, DENTAL ADVISOR editors have gathered to research, discuss and evaluate the products you use every day. The result? Information that has integrity. Never influenced by advertising or sponsorship.

Just good science and clinical observations.

dentaladvisor.com

Evaluator SPOTLIGHT

In order for a product to be awarded as top or preferred, the product must be clinically evaluated

Our evaluator offices of over 325 strong are practicing dentists throughout the United States. As volunteers, these dental professionals consult, advise, and assist product manufacturers in improving products for the profession. Their honest feedback and evaluation is the cornerstone of DENTAL ADVISOR's offerings.

Dr. Susan Graber

- Practicing in Glenview, IL
- Evaluator for 20+ years

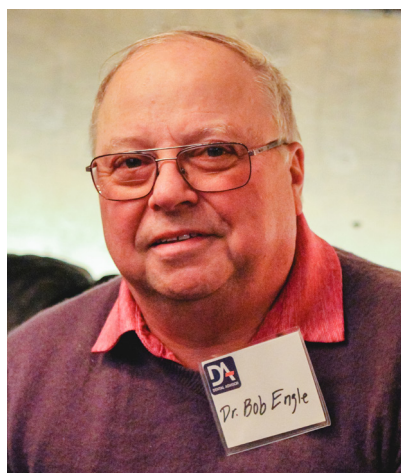
First of all, thank you for being a Clinical Evaluator for DENTAL ADVISOR!

I should be thanking you! Being a DENTAL ADVISOR Clinical Evaluator allows me the opportunity to evaluate new products. It allows me to have a dialogue about the products. And, because I'm a solo practitioner and I work mostly in my own little show, I appreciate the chance to talk to other dentists. Just as with dental meetings, this is another forum that allows me to connect with dental professionals and try new products. It's a pleasure for me."

"Just as with dental meetings, this is another forum that allows me to talk with other dentists and try new products. It's a pleasure for me."

Do you think it's difficult to be a Clinical Consultant?

Not at all. You have to fill out a survey, which is fine. I like that it allows you to coalesce your thoughts on a product.



Dr. Robert Engle

- Practicing in Morris, IL
- Evaluator for 30 years

How do you feel about being a DENTAL ADVISOR Clinical Evaluator?

I've found that DENTAL ADVISOR changed the way I practice. When I get new products and try them out, I can usually decide fairly quickly if it's not going to work for me. If I get something I don't like, I'm pretty blunt about it. But many times I've gotten products that I've tried out and then ended up using them routinely in the office; anything from filling materials to retraction cords. Being a Clinical Evaluator has been really, really good and

"I feel privileged to get to see new products when they come out and then use them; that's worth a lot."

I've enjoyed the process of seeing new products and evaluating them on a clinical level. I feel privileged to get to see new products when they come out and then use them; that's worth a lot.

I by our group of consultants.



Consultant base of more than **325** dentists throughout the United States

"I find that it jazzes up our profession and our passion because of the constant learning. I am a constant student."



Dr. Lori Trost

- Practices in the Greater St. Louis area
- Consultant for 1.5 years

What do you like about being a Clinical Evaluator for DENTAL ADVISOR?

I like the variety of products. I like the system in which you engage, and how you ask us what we want to sample. There's a good matching system there. And the way the surveys are facilitated is an easy system for us as evaluators. Sometimes I think I even write too much! The surveys are very straightforward. I've been a consultant and an evaluator for other systems, and this is the easiest system.

What is most important to you about being a Clinical Evaluator?

Being an evaluator is really important to me because it keeps you in the know, and you stay current. It really forces you to learn more about dental materials, which is probably something you didn't want to know about in dental school. But for those of us that really enjoy that, I find that it jazzes up our profession and our passion because of the constant learning. I am a constant student, so I really like that. It feeds my desire for that.

Dr. Ravi Juluri

- Practicing in Dunlap, IL
- Consultant for 1.5 years

Can you describe your experience as a DENTAL ADVISOR Clinical Consultant?

I've rated some toothbrushes and toothpastes, but mostly products related to periodontics and infection control. I was able to try great new forceps and some of them I have now adopted into my own practice.

How did you find out about the Clinical Consultant program?

"I was able to try great new forceps and some of them I have now adopted into my own practice."

I have always been interested in new products, and used to look them up all the time. One of my professors from Temple University practices in Michigan, and he told me about this program. I contacted DENTAL ADVISOR and said I would like to be a part of it!



2022

Award-Winning Products



Dr. Sabiha S. Bunek



Dr. Ona Erdt

*Presented by DENTAL ADVISOR Editor-in-Chief and CEO, Dr. Sabiha S. Bunek,
and DENTAL ADVISOR Clinical Editor, Dr. Ona Erdt*

It is often challenging for clinicians to keep abreast of the vast array of materials and equipment on the market. In this course, you will learn which products received high accolades in their particular product category. For 38 years, DENTAL ADVISOR has provided the dental industry with trusted information on products and equipment. Participants will leave with a valuable update on the latest products and techniques to take back and implement into daily practice for saving time, minimizing stress and maximizing productivity.

Course Objectives:

During this course, attendees will:

- Understand the process by which products are chosen for awards.
- Understand products that solve common clinical challenges or that simply increase efficiency and effectiveness.
- Learn about the latest products including unique features, advantages and techniques for successful clinical use.
- Gain a better understanding of new and exciting areas in dentistry and how to educate themselves and their teams.

To arrange for Dr. Bunek or Dr. Erdt to speak to your group, connect with us
at connect@dentaladvisor.com or at (734) 665-2020

*Presented in cooperation with our
online education partners at vivalearning.com*

