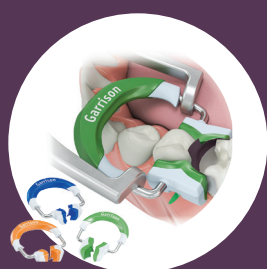


## TOP & PREFERRED PRODUCT AWARDS

2



2



**Composi-Tight® 3D Fusion  
Sectional Matrix System**

Garrison Dental Solutions



**Feather Light LED**

UltraLight Optics, Inc.



**PANAVIA™ SA  
Cement Universal**

Kuraray America, Inc.



**Visalys® Temp**

Kettenbach



**OMNICHROMA®**

Tokuyama Dental America, Inc.



**G-aenial™  
Universal Injectable**

GC America Inc.



**GC FujiCEM® Evolve**

GC America Inc.



**Wit Essential**

FGM



**Nic Tone  
Latex Dental Dam**

MDC Dental



## TOP & PREFERRED PRODUCT AWARDS



Dr. Sabiha S. Bunek  
Editor-in-Chief

Happy New Year! This past year was a landmark for us as we celebrated 36 years of contributing to the dental industry. Looking back on all of the wonderful products we have had the privilege to evaluate over the

years, its been an exciting journey to watch companies and products stand the test of time in both the laboratory and in clinical practice. Equally exciting are the number of new and innovative companies that are entering the landscape of dentistry.

Our Top Awards and Preferred Products are some of the most sought after in the industry, due to our clinical evaluation combined with lab testing. Throughout the year our evaluators provide us with valuable feedback from the field. When combined with the feedback from dental assistants, hygienists, laboratory technicians, and our awesome team at the DENTAL ADVISOR, I am confident and excited to share our results.

Many people ask if our awards are purchased or sponsored, and whether people buy their way in to make the list. The answer is no. Our awards are provided to companies that have their products evaluated by our group of evaluators (also unpaid), in our laboratories, and follow them over the long term.

As we enter our 37th year, we offer endless thanks to our team and industry leaders for continuing to support our research and publication. As always, your comments and suggestions are welcome; you can reach me at [drbunek@dentaladvisor.com](mailto:drbunek@dentaladvisor.com).

### Top Product Awards

#### Preparation .....3

Anesthetic Buffering System  
Needle  
Carbide Burs: Single-Use  
Handpiece: Electric

#### Direct Restoratives .....4-5

Sectional Matrix  
Disposable Matrix  
Bonding Agent: Self-Etch  
Bonding Agent: Universal  
Composite: Highly-Filled Flowable  
Composite: Low-Filled Flowable  
Composite: Bulk Fill Restorative  
Composite: Universal  
GI Restorative  
RMGI Restorative  
Temporary Filling Material  
Pulpal Protectant

#### Indirect Restoratives.....6-8

Soft Tissue Management Paste  
Retraction Cord  
Alginate  
Bite Registration  
Composite Core Material  
Cement: Esthetic Resin  
Cement: Adhesive  
Cement: Self-Adhesive  
Cement: RMGI  
Zirconia Primer  
Provisional: Universal  
Cement: Temporary Non-Eugenol  
Denture Reline Material

#### Lab Performer.....8

Lab Performer: Ceramic

#### Polishers .....8

Composite Polisher: Multi-Step

#### Endodontics .....9

Endodontic Repair Cement  
Dental Dam: Latex  
Dental Dam: Non-Latex  
Endodontic Irrigant

#### Hygiene.....9

Preventative Product  
Fluoride Varnish

#### Patient Products .....100

Rinse  
Oral Healing Product  
Whitening: Take-Home

#### Miscellaneous .....10

Best Value Product  
Pediatric Product

#### Small Equipment .....11

Amalgam Separator  
LED Curing Light  
Diode Laser  
Whitening: In-Office  
Intraoral Camera

#### Oral Surgery .....12

Hemostatic Dressing  
Oral Surgery Instrument

#### Diagnostic.....12

LED Headlight  
Panoramic Imaging System

#### Infection Control .....12

Glove: Chloroprene

#### Innovative Company of the Year .....13

Innovative Products

### Preferred Products

Needle.....15  
Specialty Bur.....15  
Bonding Agent: Universal.....15  
Composite: Highly-Filled Flowable.....15  
Composite: Low-Filled Flowable.....15  
Multi-Step Composite Polisher.....15  
One-Step Composite Polisher.....16  
VPS Impression Material.....16  
Cement: Self-Adhesive.....16  
Primer: Zirconia.....16  
Dental Dam: Latex.....16  
Ceramic Polishers.....16  
Whitening: Take-Home.....17  
Whitening: In-Office.....17  
Prophy Paste.....17  
Fluoride Varnish.....17  
Waterline Treatment Product.....17  
Endodontic File System.....17  
Endodontic Obturation System.....18  
Dental Dam: Non-Latex.....18  
Oral Cancer Screening.....18  
Disposable Prophy Angle.....18  
Handpiece: Air-Diven.....18  
RMGI Restorative.....19  
Composite: Bulk Fill Restorative.....19

Visit [dentaladvisor.com](http://dentaladvisor.com) for more information.

JAN/FEB 2020

VOL. 37, NO. 1



Product insights you can trust.

FOLLOW US ON SOCIAL MEDIA

**FACEBOOK**  
[FB.COM/THE DENTAL ADVISOR](https://www.facebook.com/thedentaladvisor)

**INSTAGRAM**  
[@THE\\_DENTAL\\_ADVISOR](https://www.instagram.com/the_dental_advisor)

**TWITTER**  
[@DENTALADVISOR](https://twitter.com/dentaladvisor)

**LINKEDIN**  
[/COMPANY/DENTAL-ADVISOR](https://www.linkedin.com/company/dental-advisor)

**YOUTUBE**  
[BIT.LY/DENTALADVISOR](https://www.youtube.com/bit.ly/dentaladvisor)

PUBLISHER: DENTAL EVALUATORS, INC.

John M. Powers, Ph.D.  
Sabiha S. Bunek, D.D.S.

EDITOR-IN-CHIEF

Sabiha S. Bunek, D.D.S.

EDITORIAL BOARD

Gary Bloomfield, D.D.S.  
Julius Bunek, D.D.S., M.S.  
Eric Brust, D.D.S., M.S.  
Michelle Elford, D.D.S.  
Robert Green, D.D.S.  
Nizar Mansour, D.D.S., M.S.  
Marcy Murrell, D.D.S.  
James Olsen, D.D.S.  
Kathy O'Keefe, D.D.S., M.S.  
L.W. Seluk, D.D.S., M.S., M.S.  
Brad Stieper, D.D.S., M.S.  
Anthony Valentine, D.D.S.  
Peter Yaman, D.D.S., M.S.

EXECUTIVE DIRECTOR

Mary E. Yakas, B.A., C.M.C.

CLINICAL EDITOR

Ona Erdt, D.M.D., C.D.A., M.S.H.S.

RESEARCH

John A. Molinari, Ph.D.  
Matt G. Cowen, B.S.  
Delaney Graham, B.A.

DESIGN

Jim Dombrowski  
Jenni Heller, B.A.

CIRCULATION

Heidi L. Graber

SALES

Christopher Voigtman  
Jennifer Ireland, C.D.A., R.D.A., B.S.

Please send inquiries and address changes to:

DENTAL ADVISOR

3110 West Liberty, Ann Arbor, MI 48103  
Call: 800.347.1330 - 734.665.2020  
Fax: 734.665.1648  
Email: [info@dentaladvisor.com](mailto:info@dentaladvisor.com)  
Website: [dentaladvisor.com](http://dentaladvisor.com)

No unauthorized duplication or reprints may be made. Inquiries concerning duplication may be directed to the publisher. Copyright ©2020, Dental Evaluators, Inc. All rights reserved. Printed in the U.S.A. (ISSN 0748-4666) by Print-Tech, Inc.

This publication is printed on paper that is 50% recycled and has 25% post-consumer content.

# TOP PRODUCT AWARD WINNERS

## CATEGORY: PREPARATION



### ANESTHETIC BUFFERING SYSTEM

Anutra Local Anesthetic Delivery System  
(Anutra Medical, Inc.)

#### Award-Winning Features:

**Instantaneous:** Anutra provides immediate anesthesia, even for very difficult cases. With a sterile buffering system, one cartridge can be stored for up to seven days.

**Time-Saving:** Evaluators loved the ability to start a procedure right away without having to wait for anesthesia to take effect. Patients commented that the process was painless.

#### Evaluator Comments:

- "The onset of local anesthesia was rapid, and the anesthesia obtained was profound."
- "I loved buffering the anesthetic because of the quick onset and no patient discomfort."



### CARBIDE BURS: SINGLE-USE

SINGLES (Meisinger USA)

#### Award-Winning Features:

**Smooth Cutting:** Evaluators enjoyed how these single-use burs cut very smooth and efficiently without chattering.

**Sterile:** Burs are individually packaged in a roll of pre-sterilized, slim pouches.

#### Evaluator Comments:

- "Quick cutting and sharp throughout the procedure, which reduced my time in the chair."
- "This product was very easy to use, so smooth, and it polished up beautifully!"



### NEEDLE

Septoject® Evolution (Septodont)



#### Award-Winning Features:

**Sharp, Smooth Insertion:** A scalpel like bevel provides precision in injection and removal, which results in a more comfortable injection.

**Well Marked:** Has both a bevel and orientation marking.

#### Evaluator Comments:

- "I liked the ease of penetration, insertion and injection – tip is sharp."
- "The scalpel design bevel made insertion into the tissue a breeze."



### HANDPIECE: ELECTRIC

NLZ Electric Micromotor System (NSK America)

#### Award-Winning Features:

**Excellent Access:** A smaller head and neck make for easy access to difficult areas.

**Powerful:** Evaluators enjoyed the power and torque of the handpiece, without it being heavy or vibrating during use.

#### Evaluator Comments:

- "High torque and quiet function, even under heavy loads."
- "This is one of the best electrics I've ever used! The angle of offset is perfect for access."



## 2020 EDITORIAL SCHEDULE

### ● MARCH/APRIL:

**Curing Lights:** Dr. Richard Price will discuss the newest research on beam collimation and important features of curing lights.

### ● MAY/JUNE:

**Ceramics and Surface Treatments:** This issue will focus on developments in materials to ensure longevity as well as the best selection for clinical cases.

### ● JULY/AUGUST:

**Clinical Problem Solvers:** This issue focuses on products and equipment which solve a particular challenge for practicing dentists, assistants and hygienists.

### ● SEPTEMBER/OCTOBER:

**From the Hygiene Chair:** New products and equipment for hygienists: Electronic Anesthesia • Buffering Systems • New Instruments • Cavitron and Piezo Scalers • Hygiene Handpieces • Air Polishers

### ● NOVEMBER/DECEMBER:

**Ergonomics:** This issue will focus on proper seating and position for the dental professional. Includes equipment configuration considerations, room setup and products to minimize repetitive strain injuries.

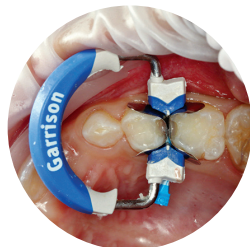


## CATEGORY: DIRECT RESTORATIVES



### SECTIONAL MATRIX

**Composi-Tight® 3D Fusion™**  
Sectional Matrix System  
(Garrison Dental Solutions)



**Clinician:**  
Dr. Sabiha S. Bunek

#### Award-Winning Features:

**Precision Contacts:** A unique combination of silicone tips on the rings, coated matrix bands and **3D Fusion Wedges** ensure an excellent contact.

**Fit:** There are a variety of sizes and lengths available to suit most any clinical situation.

#### Evaluator Comments:

- "The ring design makes placement predictable on tough preps, short clinical crowns and other challenging areas. The rubber ends of the rings result in minimal slippage."
- "Coating of the matrix made band removal easy along with the tab on the matrix band."



### BONDING AGENT: SELF-ETCH

**CLEARFIL™ SE Protect**  
(Kuraray America, Inc.)



#### Award-Winning Features:

**Unique Technology:** Specialized monomers, long-term fluoride release and anti-bacterial cavity cleaning properties assist in reducing sensitivity.

#### Convenient Storage and Dispensing:

Flow of primer and bond are easy to control and packaged in a convenient dual-bottle dispenser so bottles are not separated.



#### Evaluator Comments:

- "The gold standard in bonding."
- "Very resistant to microleakage; this bonding agent really stands the test of time."



### COMPOSITE: HIGHLY-FILLED FLOWABLE

**CLEARFIL MAJESTY™ ES Flow**  
(Kuraray America, Inc.)



#### Award-Winning Features:

**Highly Esthetic and High Polishability:** Restorations are lifelike and polish to a high shine.

**Excellent Viscosity:** Allows placement without running or slumping, readily adapts to cavity walls and flows into narrow areas and undercuts.

#### Evaluator Comments:

- "Readily apparent on radiographs."
- "Syringe design prevents oozing from the tip."



### DISPOSABLE MATRIX

**Pro-Matrix® and Pro-Matrix® Curve** (AMD Medicom, Inc.)



#### Award-Winning Features:

**Pre-Assembled, Single-Use:** No need to spend time threading a band, just unwrap and secure on the tooth.

#### Great for Minimal Support Cases:

The bands are pre-formed and create an excellent seal, even in cases with little-to-no tooth structure left. Note: This product was also nominated for a Clinical Problem Solver Award!



**Clinician:**  
Dr. James G. Olsen

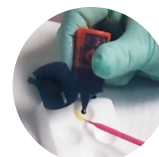
#### Evaluator Comments:

- "No set up! It's so easy to use, no chance of setting up band incorrectly."
- "Easy adjustment with a very safe and consistent tightening mechanism."



### BONDING AGENT: UNIVERSAL

**Scotchbond™ Universal Adhesive**  
(3M Oral Care)



**One-handed dispensing**



#### Award-Winning Features:

**Continuous Confidence:** Over several years, evaluators have identified **Scotchbond™ Universal** as a superior bonding agent to others used. It is viscous enough to coat the tooth without being runny and wets the tooth well.

Bond strength as tested in DENTAL ADVISOR Laboratories provided confidence for all restorative procedures.

**Unique Dispensing:** Evaluators reported precise dispensing using one hand, and minimal waste due to the narrow dropper design.

#### Evaluator Comments:

- "No refrigeration, easy dispensing, and great results every time. My assistant and I both love this product."
- "**Scotchbond Universal** has proven itself over the years; no sensitivity and margins are pristine, showing no microleakage."



### COMPOSITE: LOW-FILLED FLOWABLE

**NovaPro™ Flow** (Nanova Biomaterials, Inc.)

#### Award-Winning Features:

**Reinforced:** This product produces strong restorations by incorporating a nano-fiber reinforced matrix into its chemistry.

**Glass-Like Shine:** Evaluators commented that this material polished easily and produced a very high luster.

#### Evaluator Comments:

- "This material handles really well and adapts to walls much better than previous flowables I have used."
- "This product was very easy to use; so smooth, and it polished up beautifully!"





## CATEGORY: DIRECT RESTORATIVES



### COMPOSITE: BULK FILL RESTORATIVE

Admira Fusion x-tra  
(VOCO)

#### Award-Winning Features:

**Single Shade:** As confirmed by our evaluators, this bulk fill material's single chromatic shade has a great chameleon effect.

**Chemistry:** This material is purely ceramic-based, making it easy to polish, stain resistant and color stable, while offering a high gloss.

#### Evaluator Comments:

- "It has extraordinary finish, the cavosurface junction is seamless! Additionally, it blends in extremely well with all tooth shades."
- "My assistant noticed that I didn't have to spend as much time with my initial high speed polishing with this material compared to other composites."



### COMPOSITE: UNIVERSAL

Estelite® Sigma Quick (Tokuyama Dental America, Inc.)

#### Award-Winning Features:

**Easy Esthetics:** Evaluators were wowed by the final polish and overall esthetics of this material. A Clinical Case Report (#31) done by DENTAL ADVISOR indicated that one shade (A3 was tested in this specific case report) could blend in over a range of eight shades.

**Handling:** Evaluators found this material to have great handling properties including excellent packability, lack of stickiness and a fast 10-second cure time.

#### Evaluator Comments:

- "This composite is extremely workable and easy to use."
- "This material has the least amount of shade shifting before/after curing that I have ever encountered."



#9, Clinician: Dr. Sabiha S. Bunek



### GI RESTORATIVE

GC Fuji® IX GP Extra (GC America, Inc.)

#### Award-Winning Features:

**Consistent Mix:** Evaluators reported the delivery to provide a consistent mix each time.

**Excellent Esthetics:** For a glass ionomer, clinicians noted having multiple shades available provided better esthetics than other products.

#### Evaluator Comments:

- "I enjoyed the versatility of its use. Time and time again I looked for different ways to incorporate this product into daily use."
- "Excellent finishing and esthetics for a glass ionomer!"



### RMGI RESTORATIVE

Ionolux (VOCO)

#### Award-Winning Features:

**Fast Finish:** This product is light curable, making it ready to finish and polish quickly.

**Esthetics:** Evaluators commented that this product has all the benefits of an RMGI with esthetics similar to a composite.

#### Evaluator Comments:

- "Beautiful esthetics for an RMGI, looks similar to composites but is much quicker to use."
- "It stayed where you placed it without the typical pullback from most other RMGI's."



Clinician:  
Dr. Sabiha S. Bunek



### TEMPORARY FILLING MATERIAL

Temp-it & Temp-it Flow (Spident)

#### Award-Winning Features:

**Highly Elastic:** Both viscosities offer easy, one-piece removal.

**Excellent Handling:** Non-sticky placement; set is firm yet flexible.

#### Evaluator's Comments:

- "Ready to use, easy to place, quick set."
- "If you have used any other light-cured temporary material, this will be a distinct improvement over those previous products."



### PULPAL PROTECTANT

TheraCal LC®  
(BISCO)

#### Award-Winning Features:

**Direct Placement:** Small syringe allows for pinpoint placement directly into exposed areas.

**Resin-Based, Calcium Release:** Stimulates hydroxyapatite and secondary dentin formation as additional protection.

#### Evaluator Comments:

- "Filling materials can be placed immediately without disturbing the liner."
- "One step application, no need to mix and grab an instrument."



#14 Occlusal

Clinician:  
Dr. Edward Lowe

## CATEGORY: INDIRECT RESTORATIVES



### SOFT TISSUE MANAGEMENT PASTE

Traxodent® (Premier® Dental Products Company)

#### Award-Winning Features:

**Effective:** Evaluators reported excellent hemostasis with this product. Great as a replacement for a second cord in a two-cord technique.

**Placement:** This product is available in both syringe and undose formats. It has a small tip that allows for easy placement into the sulcus.

#### Evaluator Comments:

- "I found this much easier than packing cord, and it saves me significant time."
- "I have used ferric sulfate and two cords for many years and never thought I could find a better system, but **Traxodent®** works fantastic!"



### RETRACTION CORD

Knit-Pak™+

(Premier® Dental Products Company)

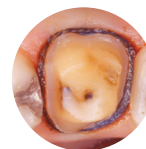
#### Award-Winning Features:

**Resistant:** This product's unique knit creates a cord that evaluators found to be easy to place and resistant to fraying at the ends. It cut clean rather than getting caught up in burs.

**Impregnated:** Product is pre-impregnated with aluminum chloride, saving the step of soaking in hemostatic material for light hemostasis needs.

#### Evaluator Comments:

- "Easy to pack with no pull back."
- "I liked just about everything: size selection, resistance to shredding, resistance to wrapping around a high-speed bur and retraction."



### ALGINATE

Cavex Cream Alginate

(Cavex Holland BV)

#### Award-Winning Features:

**Highly Accurate:** Detail to five microns makes this one of the most precise alginates ever tested at DENTAL ADVISOR.

**Smooth Consistency:** Clinicians found the consistency to be very smooth with a positive patient response.

#### Evaluator Comments:

- "We would switch to this product because it has great detail and is very user friendly."
- "Easy mixing for a creamy consistency. I never had any bubbles or voids in my impressions."



### BITE REGISTRATION

Futar® Fast

(Kettenbach)

#### Award-Winning Features:

**Fast Set:** Working time is excellent and reduces error in bite registration due to set time.

**Excellent Properties:** Stiff without being brittle and trims easily.

#### Evaluator Comments:

- "Strong, even in paper-thin areas."
- "Easy to remove – does not lock into undercuts."



#### MANUFACTURER TESTIMONIAL

Stephanie Butler, account executive for Nanova Biomaterials, Inc., stands at her conference booth next to two DENTAL ADVISOR Top Award banners for **NovaPro™ Flow**.

"We're proud to display our DENTAL ADVISOR awards and ratings in our booth!"



### COMPOSITE CORE MATERIAL

Visalys® Core

(Kettenbach)

#### Award-Winning Features:

**Hard Cure:** Material cures to a distinct consistency, allowing for easy trimming and differentiation from tooth structure.

**Ideal Viscosity:** Evaluators appreciated the viscosity, which flowed smoothly and did not slump.

#### Evaluator's Comments:

- "Perfect handling and compatible with all bonding agents!"
- "This material flows well but does not slump at all."





# TOP PRODUCT AWARD WINNERS

## CATEGORY: INDIRECT RESTORATIVES



### CEMENT: ESTHETIC RESIN

Variolink® Esthetic LC (Ivoclar Vivadent)



#### Award-Winning Features:

**Versatile and Easy to Use:** Evaluators appreciated having the light cure option for highly translucent cases in the esthetic zone, allowing for a longer working time. Removal of excess after tack-curing is quick and easy.

**Complete Kit:** All components needed to bond to composite or ceramic restorations are contained in the kit, including all try-in pastes, and five different shades of cement.

#### Evaluator Comments:

- "I was able to get precise shade matching with **Variolink Esthetic**."
- "Great shade selection and shades that remain stable over time."



### CEMENT: SELF-ADHESIVE

PANAVIA™ SA Cement Universal  
(Kuraray America, Inc.)



#### Award-Winning Features:

**Bond Strength:** As tested in DENTAL ADVISOR Biomaterials Laboratories, bond strength to dentin and enamel were best in class for a self-adhesive resin cement.

**Universal:** Since it can be utilized on any substrate, DENTAL ADVISOR Laboratories tested the bond to both lithium disilicate and zirconia and results were outstanding.

#### Evaluator Comments:

- "This cement is very strong and has great adhesive properties. There was virtually no post-op sensitivity."
- "Very user-friendly and cleaned up well."



### CEMENT: ADHESIVE

G-CEM LinkForce®  
(GC America, Inc.)



#### Award-Winning Features:

##### Comprehensive Kit:

Clinicians appreciated having all components to bond or cement ceramic and composite restorations available in the kit, including primer.

**Versatile:** Can be confidently used on multiple substrates with excellent results.

#### Evaluator Comments:

- "I like the dual-cure option, and that **G-Premio BOND** can bond to any material in any mode."
- "I liked the working time and the ease of clean-up."



### CEMENT: RMGI

GC FujiCEM® Evolve  
(GC America, Inc.)



#### Award-Winning Features:

**High Bond Strength:** Highest bond strength to zirconia among all RMGI cements tested at DENTAL ADVISOR Biomaterials Laboratories.

**Ease of Use:** No primer necessary; dispenser allows for direct placement into restoration.

#### Evaluator Comments:

- "Easy to dispense and clean excess cement with tack-cure feature."
- "The color is easy for visualization."



## DID YOU KNOW?

Many products evaluated by DENTAL ADVISOR have free samples available to our readers. For more information, go to [dentaladvisor.com/clinical-evaluations/request-a-sample](http://dentaladvisor.com/clinical-evaluations/request-a-sample)



dentaladvisor.com





## CATEGORY: INDIRECT RESTORATIVES



### ZIRCONIA PRIMER Z-Prime™ Plus (BISCO)

#### Award-Winning Features:

**Proven Increase in Bond Strength:** As tested in DENTAL ADVISOR Biomaterials Laboratories, **Z-Prime™ Plus** enhanced bond to substrate.

**Easy to Use:** Dispensed from the bottle with no refrigeration required, only a light air dry to spread.

#### Evaluator Comments:

- "Compatible with dual-cured resins and most surfaces."
- "Wets the surface really well."



### PROVISIONAL: UNIVERSAL Visalys® Temp (Kettenbach)

#### Award-Winning Features:

**Fast Set, Excellent Finish:** Clinicians found the material to set fast and trimmed easily with no chipping or fracture.

**Superior Handling:** **Visalys® Temp** does not lock onto teeth or undercuts, and peels off cleanly without sticky residue.

#### Evaluator Comments:

- "Minimal air-inhibited layer."
- "Fit is excellent."



### CEMENT: TEMPORARY NON-EUGENOL Provicol QM Plus (VOCO)

#### Award-Winning Features:

**Lack of Sensitivity:** This product incorporates calcium hydroxide which reduces patients' sensitivity by the creation of tertiary dentin.

**Easy Clean Up:** Evaluators raved about the easy cleanup of this material, both right after placement and with temporary removal.

#### Evaluator Comments:

- "Retention with this product was very good, I didn't have any crowns fall off!"
- "The automix made for very easy dispensing and worked great for multiple units."



### DENTURE RELINE MATERIAL Sofreliner Tough S (Tokuyama Dental America, Inc.)

#### Award-Winning Features:

**Adaptable:** Both doctors and patients commented on the excellent fit after application. The material adapts well to soft tissue and provides a very comfortable fit.

**Durable:** **Sofreliner Tough S** did not crack or stain during the evaluation period, nor did the material tear. It was reported to be very secure.

#### Evaluator Comments:

- "This product gives great pain-free retention."
- "**Sofreliner Tough S** is a great product that holds up well."



## CATEGORY: LAB PERFORMER



### LAB PERFORMER: CERAMIC Straumann® nice® (Straumann USA)

#### Award-Winning Features:

**Ready to Mill and Seat:** Lithium aluminosilicate reinforced with lithium disilicate block which does not require crystallization.

**High Strength:** As tested in DENTAL ADVISOR Biomaterials Laboratories, **Straumann® nice®** was the highest strength ceramic ever tested that does not need to be fired prior to seating.

#### Evaluator Comments:

- "With this material you can get a final polish similar, if not better than e.max, without having to fire it."
- "Saves considerable chair time with your CAD/CAM and you still get a beautiful, accurate and strong final product."



### COMPOSITE POLISHER: MULTI-STEP Twist Polishing Kit (Meisinger USA)

#### Award-Winning Features:

**Access:** Evaluators were able to achieve a beautiful polish with this product, even in hard-to-reach areas.

**High-Gloss:** This kit effectively created a shiny, smooth surface with no scratches in composite restorations.

#### Evaluator Comments:

- "I liked the speed and efficiency of these polishers. It was easy to get into grooves for a flawless polish."
- "I found this product lasted longer than other brands, gave a nice luster, and did not erase the anatomy I created in the restoration."



## CATEGORY: ENDODONTICS



### ENDODONTIC REPAIR CEMENT

**NeoMTA Plus®**  
(Avalon Biomed, Inc.)

#### Award-Winning Features:

**Smooth Consistency:** Material is easy to place, can be packed and molded and stays where placed.

**Versatile:** Can be used for many clinical applications by varying viscosity, which makes it very adaptable.

#### Evaluator Comments:

- "Good radiopacity."
- "Ideal material to treat a pinpoint pulp exposure during a restorative procedure."



### DENTAL DAM: LATEX

**Powder-Free Black Latex Dental Dam**  
(Sanctuary Health Sdn Bhd)

#### Award-Winning Features:

**Tear Resistant:** Evaluators found this product to be consistently tear resistant.

**Color Contrast:** The black color provides an excellent contrast, making visualizing preps easier, as well as making this a great choice when incorporating photography.

#### Evaluator Comments:

- "The black color made visibility into root canals excellent!"
- "Good for posterior quadrant dentistry as it held the cheek out better than our current rubber dam."



Colour Contrast



### DENTAL DAM: NON-LATEX

**HEDY Polyisoprene Dental Dam**  
(HEDY Canada)

#### Award-Winning Features:

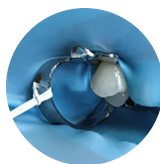
##### Exceptional Strength:

Demonstrated superior tear strength in the DENTAL ADVISOR Biomaterials Laboratory, even after being punched.

**Unique Formulation:** Has similar physical properties to natural rubber, minus the potential allergen of latex protein.

#### Evaluator Comments:

- "This material is unlike other dams. It has the best qualities of latex and non-latex and can be stretched significantly without tearing."
- "The color of the dam is perfect - especially for shade analysis, selection or re-establishing it when restoring."



**Clinician:**  
Dr. Johnna Mills



### ENDODONTIC IRRIGANT

**Irritrol®** (Essential Dental Systems)

#### Award-Winning Features:

**Combination Product:** Product has dual function, combining both chlorhexidine and EDTA for effective cleaning.

**Pre-mixed:** Ready to use, with no waiting period before drying canals.

#### Evaluator Comments:

- "The bright color helped my assistant differentiate when suctioning."
- "I could see debris actually bubbling out when using this product."



## CATEGORY: HYGIENE



### PREVENTATIVE PRODUCT

**MI Paste Plus®** (GC America)

#### Award-Winning Features:

**Sensitivity Reduction:** Patients commented on the immediate desensitizing effect and reported positive longer-term reduction in sensitivity.

**Dual-Action:** Remineralizes as well as recalcifies, aiding in caries prevention over the long-term.

#### Evaluator Comments:

- "Patients love the immediate effect in desensitizing, we use often post-whitening."
- "The viscosity of the product makes it easy to spread on the teeth in-office. It adheres well, and the tube can be given to patients to use at home."



### FLUORIDE VARNISH

**FluoroDose®** (Centrix Dental)

#### Award-Winning Features:

**No Clumping:** This varnish applies smooth, dries clear and does not clump when exposed to saliva.

**Flavor Favorites:** Evaluators found that their patients loved the flavors of this varnish: bubblegum, mint, cherry, melon and caramel.

#### Evaluator Comments:

- "Nice consistency. Easy to apply, smooth application."
- "Patients commented that the flavors of this varnish were very good."



## CATEGORY: PATIENT PRODUCTS



### RINSE

**Tooth & Gums Tonic®**  
(Dental Herb Company)

#### Award-Winning Features:

**Natural Product:** Essential oil-based, alcohol-free and non-staining.

**Reduces Inflammation:** Evaluators noted positive results in implant cases, as well as orthodontic and pregnant patients.

#### Evaluator Comments:

- "Patients had less bleeding during prophylaxis if they had been using **Tooth & Gums Tonic®**."
- "A great alternative to chlorhexidine."



## CATEGORY: MISCELLANEOUS



### BEST VALUE PRODUCT

**MIXPAC™ T-Mixer**  
(Sulzer)

#### Award-Winning Features:

##### Trademarked Design:

When tested in DENTAL ADVISOR Laboratories, **MIXPAC T-Mixer** tips produced 25-40% less waste than other brands provided with popular dental materials.

**Uniform Mix:** Evaluators reported a homogeneous mix as well as easy extrusion of material.

#### Evaluator Comments:

- "Consistent mix each and every time."
- "I really appreciate products that reduce waste and save money."



### ORAL HEALING PRODUCT

**StellaLife® VEGA® Oral Care Recovery Kit**  
(StellaLife)

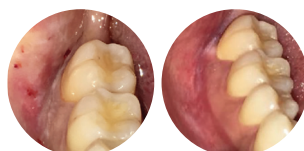
#### Award-Winning Features:

**Accelerated Healing and Non-Narcotic Pain Relief:** Patients reported faster healing and excellent pain relief using **StellaLife®**.

**Natural:** The products are homeopathic and work well for patients with a preference for natural products or have sensitivity and allergies.

#### Evaluator Comments:

- "My patients have had less discomfort after using **StellaLife®** than after previous extractions."
- "The kit with rinse, gel and spray was great for a chemo patient who was having difficulty finding a soothing product without parabens."



Pre-op

1 week post-op



### PEDIATRIC PRODUCT

**TheraCal PT®** (BISCO)

#### Award-Winning Features:

**No Mixing:** Dual-barrel syringe is dispensed directly into tooth.

**Calcium Release:** Offers additional assurance in maintaining tooth vitality over time.

#### Evaluator Comments:

- "Easy application with bendable metal cannula."
- "Great consistency – it flows well while adapting to surfaces... even axial walls."



### TAKE-HOME WHITENING

**Wit Essential (FGM)**

#### Award-Winning Features:

**Excellent Viscosity:** Material flows well from syringes and does not run off from tray.

**Patient Satisfaction:** Patients were highly satisfied with the kit, lack of sensitivity and overall result.

#### Evaluator Comments:

- "Excellent results. Higher than usual patient satisfaction."
- "Smooth texture, good viscosity of gel and it stayed in the tray."



### DENTAL ADVISOR

is a strong supporter of both educational and charitable programs in dentistry and, for the sixth year, we are a proud supporter of

**The Dental Trade Alliance Foundation.**

*Take a look at last year's grant program winners:*

[dentaltradealliance.org/foundation/2019grantrecipients](http://dentaltradealliance.org/foundation/2019grantrecipients)





## CATEGORY: SMALL EQUIPMENT



### AMALGAM SEPARATOR

NXT Hg5® Amalgam Separator  
(Solmetex)

#### Award-Winning Features:

**Ease of Use:** No tools are needed to change out the canister, and recycling is included.

**Efficient and Compliant:** Evaluators noted no decrease in suction power, and **Hg5®** has a greater than 99% efficiency for separation.

#### Evaluator Comments:

- "I was concerned about changing the filter but was pleasantly surprised at the ease and cleanliness!"
- "Great product; not only are we cleaning up our environment, but we improved the suction quality in our office as well!"



### DIODE LASER

Picasso + & Picasso Lite + (AMD LASERS®)

#### Award-Winning Features:

**Versatile:** Two models for beginner and advanced users.

**Portable:** Wireless foot pedal and handle make the unit easy to move between operators.

#### Evaluator Comments:

- "Laser is lightweight, and the handle makes it easy to carry."
- "Disposable tips are great! Stripping/cleaving are eliminated."



The Anutra Medical team uses the DENTAL ADVISOR Clinical Evaluation to promote **Anutra Local Anesthetic Delivery System** at their conference booth. **Anutra** received the Editors' Choice award, as well as the 2019 Top Award for Anesthetic Buffering System.

"The DENTAL ADVISOR are terrific partners, and we're proud to be associated with them. It's an honor to work with them."



### LED CURING LIGHT

Bluephase® G4  
(Ivoclar Vivadent)

#### Award-Winning Features:

**Intelligent Curing:** Polyvision™ technology alerts the clinician if they move the curing light probe away from the tooth while curing and dynamically adjusts the curing time to compensate for the movement.

**Speed:** As tested in DENTAL ADVISOR Laboratories, **Bluephase® G4** provided equivalent bond strength in three seconds as compared to the previous version of **Bluephase** at 10 seconds.

#### Evaluator Comments:

- "My assistant loves the light, ergonomic design."
- "This light is amazing. It keeps me focused on precision curing."



### WHITENING: IN-OFFICE

BEYOND® Polus® Advanced Ultra Whitening Accelerator  
(BEYOND® International, Inc.)

#### Award-Winning Features:

**Sonic Technology:** A combined LED and Halogen Lamp with ultrasound technology allows the material to target enamel more effectively, in a shorter time frame.

**Multiple Settings:** Settings of high, medium, and low allow for custom treatment, even for those patients sensitive to whitening.

#### Evaluator Comments:

- "BEYOND has taken whitening technology to a whole new level."
- "The lack of heat from this system is phenomenal."
- "Shortening treatment time for in-office whitening is a plus."



### INTRAORAL CAMERA

IRIS Intraoral Camera  
(Digital Doc)

#### Award-Winning Features:

##### Lightweight with Easy Access:

Slim head makes even difficult-to-access areas easy to image.

**Compatibility:** Easily integrates into practice management software.

#### Evaluator Comments:

- "So easy to operate and takes crisp, clear images!"
- "Absolutely no issues integrating easily into my software."



## CATEGORY: ORAL SURGERY



### HEMOSTATIC DRESSING

SafeGauze® HemoStat™ (AMD Medicom, Inc.)

#### Award-Winning Features:

**Transformative:** Once placed, the material gels and attaches effectively to mucosa.

**Controlled Hemostasis:** SafeGauze® HemoStat™ allows for immediate placement over surgical sites and expands to cover and stop bleeding.

#### Evaluator Comments:

- "Easy to use, good consistency and stays firm for some time."
- "Adheres well to the mucosa. Good gel viscosity."



### ORAL SURGERY INSTRUMENT

FRINGS® (TBS Dental Instruments)

#### Award-Winning Features:

**Auto Retraction:** Forceps are spring-loaded, which eliminates the need to use fingers to open them.

**Serrated Tips:** Serrated tip allows for an excellent grip on the tooth.

#### Evaluator Comments:

- "The spring-loaded handles are brilliant. Very comfortable and a good fit in the hand."
- "I really liked the serrated tips and the hinges. The beaks gripped teeth well."



## CATEGORY: DIAGNOSTIC



### LED HEADLIGHT

Feather Light LED  
(UltraLight Optics, Inc.)

#### Award-Winning Features:

**No Neck Fatigue:** Lightest weight headlight on the market. Evaluators found this very comfortable to wear with very little-to-no noticeable extra weight on their eyewear.

**Illumination:** Bright focused light illuminates the entire field of vision and lasts all day with advanced battery pack.

#### Evaluator Comments:

- "Ability to adjust brightness with a touch, rather than a knob, is nice."
- "So effective that once you get used to it, you almost don't need a traditional dental overhead light."



**Clinician:**  
Dr. Julius E. Bunek



### GLOVE: CHLOROPRENE

Blossom® Chloroprene Gloves  
(Mexpo International)

#### Award-Winning Features:

**Comfortable:** Evaluators reported excellent fit with these gloves and that their stretchability makes them feel similar to wearing latex.

**Tactile Sensitivity:** This product is very thin, yet protective, providing an excellent tactile sense while wearing.

#### Evaluator Comments:

- "I usually wear nitrile gloves that are very stiff. These chloroprene gloves were amazing; they felt just like latex."
- "These gloves are very comfortable, providing a true fit. Between their beautiful colors and tactile sensitivity, they were a hit in our office."



### PANORAMIC IMAGING SYSTEM

CS 8100 (Carestream Dental)

#### Award-Winning Features:

**Easy Positioning:** Evaluators reported the ease of placing patient's head and face using pre-set, easy to understand programs and markings on the unit.

**Outstanding Clarity:** Images were consistently clear and concise, enabling faster diagnostics without a need to retake or adjust through software.

#### Evaluator Comments:

- "I have used a lot of panorex machines in my career. This one is by far the most user friendly, easiest machine to use."
- "This machine is quick, concise, and easy to use. We get a great image quickly every time."



Robert Salem and Susan Griffin of Air Techniques hold a DENTAL ADVISOR Microbiology Results Report about Preferred Product award winner, Monarch Lines.

"A lot of people don't know about the biofilms growing in their water bottles. The DENTAL ADVISOR report explained it really well, and our salespeople are using it like crazy. We have it up on our website! It's a really good piece."





# INNOVATIVE COMPANY OF THE YEAR **Tokuyama Dental**

Here at DENTAL ADVISOR, we see a lot of innovation and unique products being brought to the market. For the first year ever, we saw a need to recognize a company that showcases unique science and novel concepts.

**Tokuyama Dental** is an innovator. Since we began working with them back in the late 80s, they have continually brought new and game-changing products to market. The focus of the company is to create innovation that provides more efficient ways to practice. Their award-winning composite, **Estelite® Sigma Quick**, is a 11-year winner for Top Universal Composite. Though many competitors have come through our doors, none has been able to beat the technology, esthetics, and handling that **Estelite® Sigma Quick** offers.

Every Tokuyama product evaluated over the years has received a very good to excellent rating. Our team at DENTAL ADVISOR congratulates **Tokuyama Dental** for consistent innovation based on sound science and looks forward to new and exciting products in the future.



**Tokuyama World Headquarters**  
Tokyo, Japan



**Tsukuba Research Laboratory**  
Ibaraki, Japan

## INNOVATIVE PRODUCT

### OMNICHROMA®

(Tokuyama Dental America, Inc.)



**OMNICHROMA** is  
opaque at placement



Perfect shade blending,  
post-cure, #7

**OMNICHROMA®** is a proprietary one-shade composite which incorporates Smart Chromatic Technology, a unique technology based on fillers that generate red-to-yellow structural color. As a result, the cured composite blends with the surrounding tooth structure of almost any patient, from shade A1 to D4.

#### Evaluator Comments:

- "The transition from opaque-white to tooth shade blending after curing is amazing."
- "Creamy consistency, stacks well and handles beautifully."
- "Easy to pack. Did not stick to instruments or pull away from the tooth during placement."
- "This concept could be a real game changer for everyday dental restorations."

## INNOVATIVE PRODUCT

### Tokuyama Universal Bond

(Tokuyama Dental America, Inc.)



**Tokuyama Universal Bond** is unique in that it requires no curing. In addition, it can be used with self, selective and total etch procedures as well as a universal primer for silica-based, zirconia-based and metallic restorations. When tested in DENTAL ADVISOR Laboratories, bond strength to dentin, enamel and substrate were excellent.

Tokuyama Universal Bond Shear Bond Strength, MPa		
Substrate	24 Hours	5000 Thermocycles
Self-Etched Dentin	28.9 (3.4)	36.0 (5.2)
Total-Etched Enamel	34.6 (3.0)	38.4 (4.7)
Zirconia	33.6 (4.3)	26.9 (1.7)

Means with Standard Deviations in Parentheses

#### Evaluator Comments:

- "Great product. Easy to apply, fast and no wait time." • "A wonderful material for deeper preparations and post and core build-up placement."
- "I like that you don't have to light-cure." • "Good viscosity with minimal film thickness, making it easy to apply."



## Absorbent Cheek Pad

**NEODRYS**, Microcopy

## Air-Water Syringe Tip

**Seal-Tight Disposable  
Air-Water Syringe Tip**  
KaVo Kerr

## Alginate Alternative

**Xantasil**  
Kulzer

## Amalgam Containment System

**HG Containment Series**, Anterior Quest

## Apex Locator

**Canal Pro**  
Coltene

## Bonding Agent: Total-Etch

**OptiBond™ FL**  
KaVo Kerr

## Ceramic

**IPS e.max Press**, Ivoclar Vivadent

## Composite: Bulk Fill, Base

**SDR Flow+**, DENTSPLY Sirona

## Composite Polisher: One-Step

**Minnow Polishers**, Microcopy

## Contoured Matrix Band

**PinkBand & PinkBand Contour**  
PinkBand Dental Solutions

## Desensitizer

**TEETHMATE Desensitizer**  
Kuraray America, Inc.

## Diamond: Single-Use

**Neo Diamond**, Microcopy

## Disposable

**Bib-Eze® Disposable Bib Holders**  
Kerr TotalCare

## Disposable Prophyl Angle

**Nupro Revolv**, DENTSPLY Sirona

## Dynamic Mixer

**Dynamix Speed**  
Kulzer

## Endodontic File System

**Hy-Flex EDM**, Coltene

## Endodontic Obturation System

**elements IC**, KaVo Kerr

## Evacuation Line Cleaner

**AQ Solution**  
Anterior Quest

## Composite: Esthetic

**Harmonize**  
KaVo Kerr

## Fiber Post

**Para Post Taper Lux**  
Coltene

## Glove: Latex

**Cyntek Powder-Free Latex Gloves**  
Cranberry

## Handpiece: Air-Driven

**Tornado LK**  
Bien-Air

## Handpiece: Attachment

**SMARTmatic S20**  
KaVo Kerr

## Handpiece Maintenance System

**QuattroCare**  
KaVo Kerr

## Hand Care

**FiteBac**  
Kimmerling Holdings Group, FiteBac  
SkinCare LLC

## Hygienist's Choice

**GingiCaine® Syringes**  
PacDent International, Inc.

## Innovative Product

**One-Coat 7**, Coltene

## Isolation & Evacuation Device

**DryShield Starter Kit**, DryShield

## Lab Performer

**Filtek One**, 3M Oral Care

## Mask

**BeeSure VIBE**, EcoBee Inc.

## Multi-Use Carbide Bur

**Alpen Carbide**  
Coltene

## Oral Cancer Screening

**Oral ID**  
Foward Science

## Powered Toothbrush

**PRO-SYS Variosonic Toothbrush**  
Benco Dental Co.

## Polishers: Ceramic

**ALL CERAMIC Polishers®**  
Cosmedent Inc.

## Prophy Paste

**Gelato**  
Keystone Dental



## PVS Impression Material

**IMPRINT 4**  
3M

## Scannable Impression Material

**Flexitime Fast & Scan**  
Kulzer

## Specialty Bur

**Alpen Speedster**  
Coltene

## Surface Disinfectant

**OPTIM 1**, SciCan

## Ultrasonic Scaler

**Cavitron Select SPS**  
DENTSPLY Sirona



## NEEDLE Transcendent Painless Injection Needles (Sulzer)

### Why This Product Was Chosen:

**Smooth Injection:**  
Sharpness of the bevel allows for smooth injection.

### Evaluator Comments:

- "Once screwed on, the threads of the hub lock onto the syringe better than other needles."
- "Needle is very sharp and slides smoothly into tissue."



## SPECIALTY BUR Occlusal Reduction Kit (Meisinger USA)

### Why This Product Was Chosen:

**Time Saving:** No need to keep checking and rechecking the occlusal clearance during your crown prep. With these burs, your reduction can be obtained quickly and precisely. The angled, non-cutting stop limits the bur to the desired depth.



### Evaluator Comments:

- "They have many sizes to choose from and I get the peace of mind that I am removing the ideal amount of tooth structure."
- "Very easy to use with a reliable stopper effect, so no need to worry about over-prepping."



## BONDING AGENT: UNIVERSAL CLEARFIL™ Universal Bond Quick (Kuraray America, Inc.)

### Why This Product Was Chosen:

**Fast and Easy:** This material requires no lengthy scrubbing or waiting. Just rub in, air thin and cure. Can be used for direct or indirect restorations and contains fluoride and silane.

### Evaluator Comments:

- "The quick scrub, air and cure procedure is very nice when trying to work in high moisture areas especially when isolation is difficult."
- "I love how it is very thin after air-drying. Also, we like the option to make it self-curing."



## COMPOSITE: HIGHLY-FILLED FLOWABLE G-aenial™ Universal Injectable (GC America Inc.)

### Why This Product Was Chosen:

**Handling:** This product is a strong, highly-filled injectable that evaluators found to have superb handling qualities, great flow and high versatility.



### Evaluator Comments:

- "It adapts to the prep better than anything I have ever used in my career."
- "Cuts restoration time significantly and drastically reduces finishing time."



## COMPOSITE: LOW-FILLED FLOWABLE ES Flow (Spident)

### Why This Product Was Chosen:

**Excellent Viscosity:** Evaluators raved about the viscosity of this material. This medium viscosity material is easy to place and has very controlled flow without slumping.

### Evaluator Comments:

- "I liked the flow into the prep and how it adapted to the prep walls."
- "The application is awesome, and the viscosity allows it to stay in place."



## MULTI-STEP POLISHER Super-Snap X-Treme (SHOFU)

### Why This Product Was Chosen:

**Exceptional Finishing and Polishing:** As tested in the DENTAL ADVISOR Laboratory and reported by evaluators, this polishing system produces a superior gloss while being durable and easy to use.



### Evaluator Comments:

- "They left a very smooth and glossy final finish on my composites."
- "Excellent finish. Silicone discs are much easier to change out than metal-centered discs."

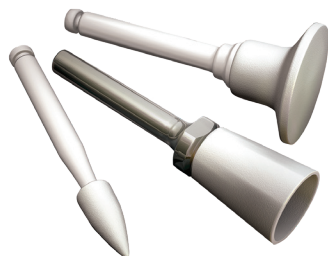


## ONE-STEP COMPOSITE POLISHER

One-Gloss (SHOFU)

### Why This Product Was Chosen:

**Dual Purpose:** Evaluators enjoyed the simplicity of this one-step system. Apply firmer pressure to finish and lighter pressure to polish.



### Evaluator Comments:

- "Nice finish without the grittiness I see with other polishers."
- "Doesn't break down when you exert pressure. I like that I can polish and finish by just adjusting pressure."



## CEMENT: SELF-ADHESIVE

TheraCem® (BISCO)

### Why This Product Was Chosen:

**Ion-Releasing and Effortless:** This material was found to be easy to use and clean, as well as very versatile, with the added benefit of calcium and fluoride ion release.



### Evaluator Comments:

- "The simplicity made it a pleasure to use, clean-up was perfect and there was no sticky residue."
- "Super thin viscosity and film thickness made it easy to dispense and spread."



## DENTAL DAM: LATEX

Nic Tone Latex Dental Dam  
(MDC® Dental)

### Why This Product Was Chosen:

#### Visibility:

Evaluators noted the great tear resistance of this product. The superior adaptation to the teeth and contrasting colors made for excellent visibility, which is also beneficial when taking photos.



### Evaluator Comments:

- "A good seal is routine with these dams."
- "This latex dental dam is better than any I have used. Every clinician should try this dam."



## VPS IMPRESSION MATERIAL

Panasil® (Kettenbach)

### Why This Product Was Chosen:

#### Definition with Hydrophilicity:

Evaluators enjoyed the quality impressions they got with this material, even in the presence of difficult hemostasis or moisture. **Panasil®** offers a variety of viscosities for every situation.



### Evaluator Comments:

- "Light body flowed smoothly, captured excellent detail, and there was good color contrast between light/heavy body materials!"
- "Beautiful, clear impressions even when saliva or fluid is in the area."



## PRIMER: ZIRCONIA

Premier® Universal Primer  
(Premier® Dental Products Company,  
powered by B.J.M. Laboratories, Ltd.)

### Why This Product Was Chosen:

**Ease of Use:** This product is a quick, simple way to increase bond strengths on ceramic materials such as zirconia.

### Evaluator Comments:

- "Gives me peace of mind in terms of improved retention, especially for zirconia crowns!"
- "Easy to use and has good wettability."



## CERAMIC POLISHERS

ASAP Indirect +  
(Clinician's Choice)

### Why This Product Was Chosen:

#### Adaptable and Efficient:

No need to constantly remove the restorations to adjust, these adjusters and polishers can be used intraorally. The spiral polishers were found to create a very high luster.



### Evaluator Comments:

- "Easy to use, efficient polishing and great results."
- "The polishers left a surface that was almost better than a glaze."





## WHITENING: TAKE-HOME

**Nu Radiance®** (Nu Radiance, Inc.)

### Why This Product Was Chosen:

#### Versatile and Effective:

With this material you can see great results while customizing the strength and wear time to your patient's needs. Four strengths are available with wear times that can range from 30 minutes to eight hours.



### Patient Evaluator Comments:

- "Bleaching gel is thicker and seems to stay in the tray better."
- "Very easy to use and I didn't have any sensitivity to my teeth or gums with the 30%."



## WHITENING: IN-OFFICE

**Sinsational Smile®** (Sinsational Smile, Inc.)

### Why This Product Was Chosen:

#### Lack of Sensitivity:

Little-to-no sensitivity reported during or after whitening with this system.



### Evaluator Comments:

- "Zero prep needed with no need to make bleach trays."
- "Loved that there is no need for block-out! Simple to use and much quicker time in chair."



## PROPHY PASTE

**Enamel Pro® Prophyl Paste**

(Premier® Dental Products Company)

### Why This Product Was Chosen:

**Remineralization:** This unique prophy paste features amorphous calcium phosphate (ACP) to aid in rapid remineralization. Evaluators also commented on the great polishing properties.



### Evaluator Comments:

- "I love the consistency and that it doesn't splatter."
- "My patients commented on how smooth their teeth felt after treatment and **Enamel Pro's** flavor options are my patients' favorites."



## FLUORIDE VARNISH

**MI Varnish®**

(GC America Inc.)

### Why This Product Was Chosen:

**Clear and Smooth:** Evaluators and their patients enjoyed that this product produced a light film and dried clear. Additionally, this material bioactively releases fluoride, calcium, and phosphate ions.



### Evaluator Comments:

- "My patient showed quick response in reducing sensitivity."
- "Sets immediately and stays in place very well."



## WATERLINE TREATMENT PRODUCT

**Monarch® Lines Cleaner**

(Air Techniques)

### Why This Product Was Chosen:

**Preferred by our Laboratories:** DENTAL ADVISOR Laboratories tested **Monarch Lines** over a three month period in dental offices. **Monarch Lines** successfully reduced and maintained bacterial levels in dental office waterlines in as early as one week of treatment.



### Evaluator Comments:

- "No mixing; this product is really easy to use!"
- "Our patients comment on the minty taste of our water and find it refreshing."



## ENDODONTIC FILE SYSTEM

**Dia-X Rotary File System**

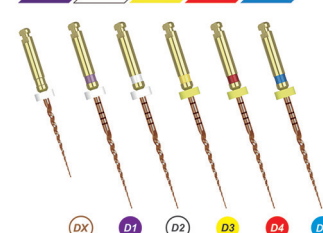
(DiaDent®)

### Why This Product Was Chosen:

#### Confidence and Control:

Evaluators felt this system was efficient, flexible, and very fracture-resistant. It was easily integrated into their current endodontic system and increased the quality of endodontics in their office.

**Dia-X File**



### Evaluator Comments:

- "Files were smooth gliding with the lightest pressure."
- "Relatively small number of files to get the job done with beautiful shape to the canal prep."



## ENDODONTIC OBTURATION SYSTEM

**Dia-Duo Cordless Obturation System**  
(DiaDent®)

### Why This Product Was Chosen:

#### Fast and Reliable Fills:

This cordless, lightweight system heats and dispenses rapidly and consistently. Evaluators remarked on the short learning curve needed to obtain effective fills.



#### Evaluator Comments:

- "The flexibility of the obturation tips was excellent. Flexible enough to navigate around curves, but stiff enough to not bend when advancing."
- "Both heat up almost instantaneously."



## ORAL CANCER SCREENING

**Goccles®** (Pierrel Pharma)

### Why This Product Was Chosen:

#### Easy-to-Adopt Prevention:

Incorporating an advanced oral cancer screening tool in your office is easy with this product. All you need are the glasses and a traditional curing light to increase visualization of areas of concern.



#### Patient Evaluator Comments:

- "Simple to use and showed lesions much more clearly."
- "Patients liked the use of this technology, they felt they were getting a better-quality exam."



#### MANUFACTURER TESTIMONIAL

**Deborah S. Laird, R.Ph.** of Pierrel Pharma at the Chicago Midwinter Meeting displaying the DENTAL ADVISOR Preferred Product Award banner for **GOCCLLES**.

"The DENTAL ADVISOR rating lends credibility to the studies that we submitted for FDA approval. Having that clinical evaluation is very meaningful."



## DENTAL DAM: NON-LATEX

**Isodam®**  
(4D Rubber Company)

### Why This Product Was Chosen:

#### Tear-Resistant and Flexible:

As tested in the DENTAL ADVISOR Laboratory and reported by evaluators, this dam was very flexible and has a high tear-strength threshold. Clinicians noted the dam was easy to place, including between teeth and over the clamp.



#### Evaluator Comments:

- "Great product that is even better than the latex brands I've used."
- "Very flexible, doesn't tear and adapts nicely."



## DISPOSABLE PROPHY ANGLE

**2pro®** (Premier® Dental Products Company)

### Why This Product Was Chosen:

**Access:** Hard-to-clean areas are easily accessible with this product. The design includes a unique head angulation as well as a 2-in-1 design that includes both a prophyl cup and a pointed tip.



#### Evaluator Comments:

- "I like the pointed tip for removing interproximal stain, furcation involvement areas, bridge abutments and implants."
- "These run really smooth and quiet with a lack of vibration."



## HANDPIECE: AIR-DRIVEN

**Ti-Max Z900L** (NSK America)

### Why This Product Was Chosen:

**Proprietary Turbine:** **Ti-Max Z900L** allows for a high-power output, which enables smooth cutting and no vibration or chatter.

#### Evaluator Comments:

- "Slim neck – good visibility."
- "Very smooth, concentric handpiece."



# PREFERRED PRODUCT AWARD WINNERS



## RMGI RESTORATIVE

**Riva Light Cure HV**  
(SDI)

### Why This Product Was Chosen:

**Handling:** Clinical evaluators found this product easy to place and adapt without being sticky.

### Evaluator Comments:

- "This product was sculptable and much easier to place than other products I have tried."
- "Being a light cured material, I had plenty of time to manipulate and contour."



## COMPOSITE: BULK FILL RESTORATIVE

**Aura Bulk Fill**  
(SDI)

### Why This Product Was Chosen:

**Final Finish:** As commented by clinical evaluators and confirmed by the DENTAL ADVISOR Biomaterials Laboratory, this product was easy to polish and had a high gloss finish of 83 gloss units.

### Evaluator Comments:

- "Excellent chameleon effect. The universal shade blended well with most teeth."
- "The handling qualities of this material are excellent."



## ADDITIONAL PREFERRED PRODUCT AWARD WINNERS

### Air/Water Syringe Tip

**FlashTips**, DENTSPLY Sirona

### Alginate

**KromaFaze Singles**, KaVo Kerr

### Apex Locator

**Apex ID™ Digital Apex Locator**  
KaVo Kerr

### Bonding Agent: Total Etch

**iBond Total Etch**, Kulzer

### Burs: Carbide, Multi-Use

**Neo Bur**, Microcopy

### Cement: Adhesive

**Cem EZ**, Zest Dental Solutions

### Cement: Endodontic Bioactive

**MTA Repair HP**, Angelus USA LLC

### Cement: Esthetic Resin

**NX3 Nexus**, KaVo Kerr

### Cement: RMGI

**RelyX Luting Plus Automix**, 3M Oral Care

### Cement: Temporary

**Temp Bond NE**, KaVo Kerr

### Composite: Esthetic

**Venus® Pearl**, Kulzer

### Composite: Bulk Fill Restorative

**Aura Bulk Fill**, SDI

### Composite: Universal

**Brilliant EverGlow**, Coltene

### Enzymatic Cleaner

**Empower Dual**, KaVo Kerr

### Fiber Post

**GLASSIX Plus**, Nordin

### GI Restorative

**Ionostar Plus**, VOCO

### Glove: Chloroprene

**Micro-Touch Denta-Glove**,  
**Green Neoprene**, Ansell

### Glove: Nitrile

**Ultraform Gloves**, Ansell

### Handpiece: Electric

**Electromatic Plus**, KaVo Kerr

### Isolation & Evacuation Device

**ReLeaf**, Kulzer

### LED Headlight

**FireFly**, DenMat Holdings, LLC

### Preventative Product

**ReminPro**, VOCO



### Primer: Universal Ceramic

**CLEARFIL Ceramic Primer Plus**  
Kuraray America, Inc.

### Provisional: Universal

**Venus Temp 2**, Kulzer

### Provisional: Esthetic

**Perfectemp® 10**, DenMat Holdings, LLC

### Retraction Cord

**Short Cut**, KaVo Kerr

### Soft Tissue Management Paste

**Soft Tissue Retraction Paste**, 3M

### Temporary Filling Material

**Clip Flow**, VOCO



# 2020 Award-Winning Products

*Presented by DENTAL ADVISOR Editor-in-Chief and CEO, Dr. Sabiha S. Bunek,  
and DENTAL ADVISOR Clinical Editor, Dr. Ona Erdt*



**Dr. Sabiha S. Bunek**  
DENTAL ADVISOR  
CEO & Editor-in-Chief



**Dr. Ona Erdt**  
DENTAL ADVISOR  
Clinical Editor

It is often challenging for clinicians to keep abreast of the vast array of materials and equipment on the market. In this course, you will learn which products received high accolades in their particular product category. For 37 years, DENTAL ADVISOR has provided the dental industry with trusted information on products and equipment. Participants will leave with a valuable update on the latest products and techniques to take back and implement into daily practice for saving time, minimizing stress and maximizing productivity.

## Course Objectives:

*During this course, attendees will:*

- Understand the process by which products are chosen for awards.
- Understand products that solve common clinical challenges or that simply increase efficiency and effectiveness.
- Learn about the latest products including unique features, advantages and techniques for successful clinical use.
- Gain a better understanding of new and exciting areas in dentistry and how to educate themselves and their teams.

*To arrange for Dr. Bunek or Dr. Erdt to speak to your group, connect with us at [connect@dentaladvisor.com](mailto:connect@dentaladvisor.com)  
or at (734) 665-2020, ext. 129*

*Presented in cooperation with our  
online education partners at [vivalearning.com](http://vivalearning.com)*

