

# THE DENTAL ADVISOR™

“Improving Patient Care Through Research & Education”

**EDITORS**

John W. Farah, D.D.S., Ph.D.  
John M. Powers, Ph.D.

**EDITORIAL BOARD**

John A. Molinari, Ph.D.  
Peter Yaman, D.D.S., M.S.  
William A. Gregory, D.D.S., M.S.  
Santine Anderson, D.D.S.  
Sabiha S. Bunek, D.D.S.  
Lori Brown, D.D.S.  
Brent Kolb, D.D.S.  
Nizar Mansour, D.D.S.  
Charles I. McLaren, D.D.S., M.S.  
Kathy L. O’Keefe, D.D.S., M.S.

Thomas Poirier, D.D.S.  
William T. Stevenson, D.D.S.  
Robert Stevenson, D.D.S.  
Gytis Udrys, D.D.S.

**EXECUTIVE TEAM**

Sabiha S. Bunek, D.D.S.  
Jackie Farah, M.A.Ed.  
Annette M. Frederick  
Heidi L. Graber  
Jennifer Kalasz  
Pari Karani  
Craig Macfarlane  
Tricia G. Price  
Joelle Prose, M.B.S.

Nelson Williams, M.S.  
Mary E. Yakas, B.A., CMC

**DIRECTOR OF RESEARCH**

Ron Yapp, M.S.

**THE DENTAL ADVISOR**

3110 West Liberty  
Ann Arbor, MI 48103  
Toll free: 800.347.1330  
E-mail: info@dentaladvisor.com  
Web Site: www.dentaladvisor.com

NUMBER 37 - MAY 2011

## Radiopacity of Several Fiber Posts

R. Yapp, M.S., J.M. Powers, Ph.D.

THE DENTAL ADVISOR Biomaterials Research Center  
Dental Consultants, Inc., Ann Arbor, Michigan

**Purpose** – To determine the radiopacity of several fiber post products.

**Introduction** – Radiopacity of an esthetic fiber post is important to the extent that it allows the post to be clearly identified on an x-ray when surrounded by tooth and bone tissue and core material. Values of radiopacity are reported in equivalent thicknesses of pure aluminum, which are matched to the post by including a standard aluminum step wedge in the radiograph with the post. X-ray photographic grey levels of the different thicknesses of the step wedge are compared to the grey level of the post at the level where the post is cylindrical.

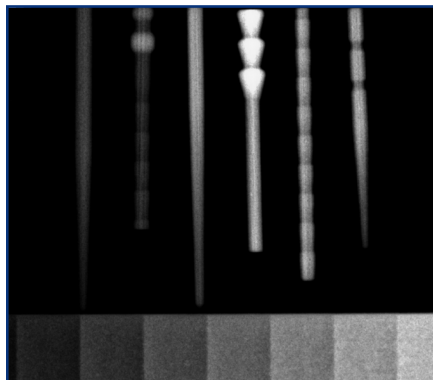
**Materials** –

*FibreKleer 4X Tapered Post* (Pentron Clinical)  
*FibreKleer 4X Original Post* (Pentron Clinical)  
*RelyX Fiber Post* (3M ESPE)

*FibreKleer 4X Parallel Post* (Pentron Clinical)  
*DT Light-Post Illusion X-RO* (Bisco Dental Products)  
*ParaPost Fiber Lux* (Coltene/Whaledent)

**Methods** – Post specimens were radiographed with a Gendex GX-770 digital x-ray unit set at 70 KVp for 7 seconds along with a pure aluminum step wedge. Grey levels of the posts were measured utilizing the Photoshop histogram function and were compared with those of the step wedge to determine an equivalent thickness of aluminum for each post. Measurements were taken at the major diameter of each post. Means and standard deviations were calculated.

**Results** – Values of radiopacity of the posts are listed in the chart below. The posts are compared in Figure 1.



Post	Radiopacity, mm Al (SD)
RelyX Fiber Post	2.2 (0.0)
ParaPost Fiber Lux	1.9 (0.1)
D.T. LIGHT-POST X-RO Illusion	3.7 (0.0)
FibreKleer 4X Parallel	4.1 (0.0)
FibreKleer 4X Original	3.8 (0.1)
FibreKleer 4X Tapered	3.9 (0.1)

Figure 1: Posts from left to right: RelyX Fiber Post, ParaPost Fiber Lux, D.T. Light-Post X-RO Illusion, FibreKleer 4X Parallel, FibreKleer 4X Original, and FibreKleer 4X Tapered.

**Conclusions** – The three *FibreKleer 4X Fiber Posts* (Pentron Clinical) were significantly more radiopaque than either *RelyX Fiber Post* or *ParaPost Fiber Lux*. *FibreKleer 4X Parallel Post* was the most radiopaque of all of the posts tested.